



FAA Approved Facility

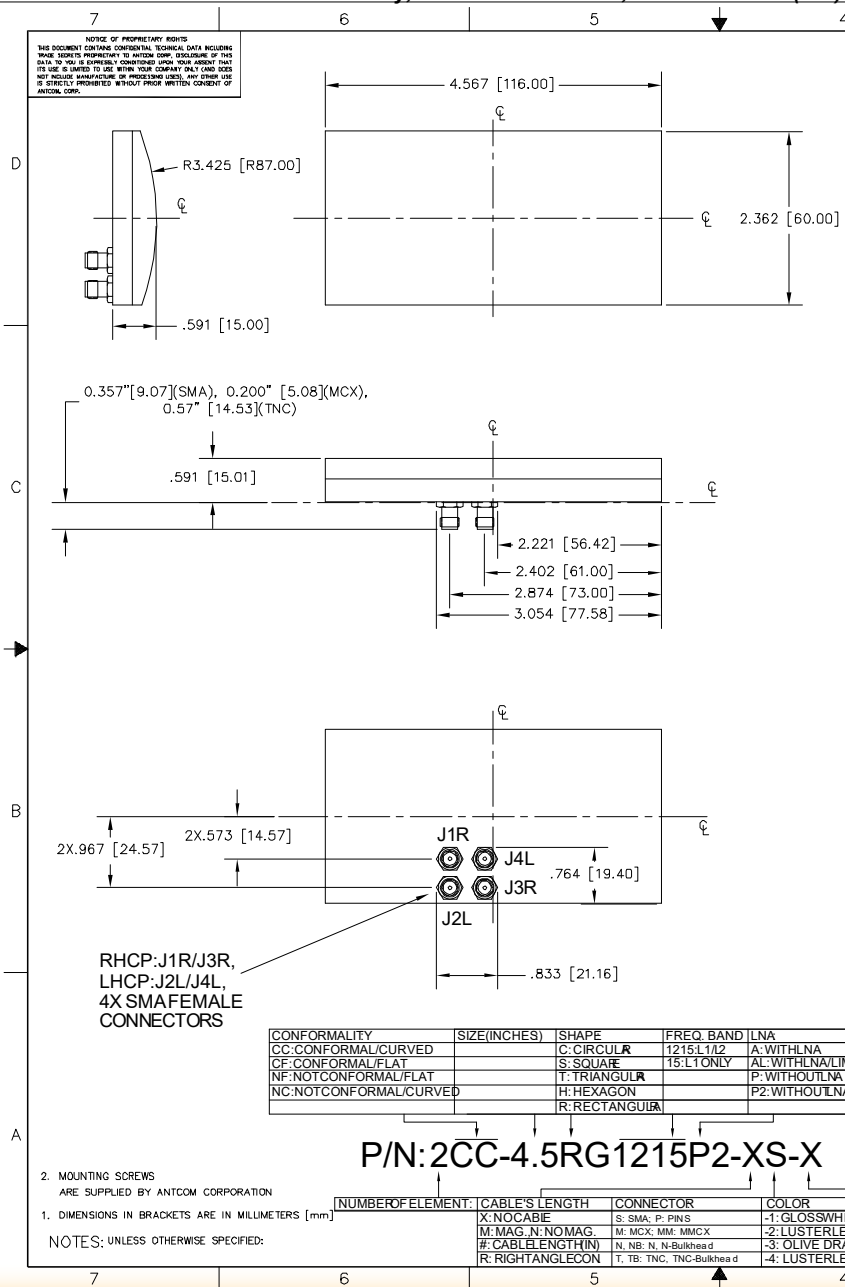
2-Element-4-Channel (RHCP/LHCP) CRPA L1/L2 GPS Antenna Array (4.56"x2.36"x0.59"), Conformal, P/N: 2CC-4.5RG1215P2-XS-X



"-PL-" or "-AL-" for Limiter Options for High Power Pulse Protection

ANTCOM CORPORATION . 367 Van Ness Way, Suite 602 . Torrance, CA 90501 . Tel: (310) 782-1076 . Fax: (310) 782-1086 . E-mail: antennas@antcom.com . http://www.antcom.com

Wide Band GNSS Option Is Available



SPECIFICATIONS

ELECTRICAL:		L1: (1575.42 ±15) MHz		L2: (1227.60 ±15) MHz	
FREQUENCY:		HEMISPHERICAL			
RADIATION PATTERN:		RHCP/LHCP			
POLARIZATION:		RHCP/LHCP		RHCP/LHCP	
VSWR:		< 1.5:1			
IMPEDANCE:		50 ohms			
ANTENNA ELEMENT GAIN (dBic):	Free Space	16 in G.P.	4 ft G.P.	Free Space	16 in G.P.
@ 90 ° (ZENITH):	+ 4.6	+ 0.3	+ 2.9	+ 1.8	+ 1.9
@ 10 ° Elevation:	- 2.5	- 3.1	- 1.8	- 4.2	- 3.1
@ 20 ° Elevation:	- 1.1	- 1.1	+ 0.7	- 2.9	- 1.1
@ 30 ° Elevation:	+ 0.5	+ 0.9	+ 1.7	- 2.0	+ 0.5
@ 60 - 90 ° Elevation:	> 3.6	+ 3.1/+ 0.3	> 2.1	> 0.9	+ 3.1/+ 1.9
BEAM WIDTH (3dB):	103 Deg.	120 Deg.	146 Deg.	108 Deg.	120 Deg.
AXIAL RATIO:		2 dB		2 dB	
NULL DEPTH:		>30 dB (Analog), 55-60 dB (Digital)			

LNA OPTION:

LNA GAIN:	33 dB	35 dB
LNA NOISE FIGURE:	3.0 dB	3.0 dB
LNA P1dB Out:		
LNA DC POWER:	2.5V/20mA, 3V/29mA, 3.3V/35mA, (2.5-24)V/<50mA	
REJECTION @ (-50/+50) MHz:	-41 dB / -59 dB	
@ (-100/+100) MHz:	< -65 dB	
POWER HANDLING:	1 Watt CW, Optional: 10 Watts 1 Microsec Pulse (-AL-)	

MECHANICAL:

SIZE: WIDTH: 2.362 in. [60.00 mm], LENGTH: 4.567 in [116 mm], HEIGHT: 0.591 in. [15 mm]

WEIGHT: 8.0 oz. (226 g)

FINISH: SKYDROL RESISTANT POLYURETHANE ENAMEL
BASE IRIDITE PER MIL-C-5441

MATERIAL: 6061-T6 ALUMINUM ALLOY BASE
COMPOSITE RADOME, IMPACT, ABRASION, UV, SOLVENT, SKYDROL RESISTANCE, AND FIRE RETARDANT

CONNECTOR: 4 SMA FEMALES: RHCP PORTS: J1R, J3R, LHCP PORTS: J2L, J4L (OPTION: SMA, TNC Bulkhead, N, N Bulkhead MCX, MMCX, or Cable)

ENVIRONMENTAL:

TEMPERATURE: -67 °F TO +185 °F [-55 °C TO +85 °C]

ALTITUDE: 70,000 ft.

VIBRATION: > 30 G's

LEAKAGE: HERMETICALLY SEAL

FEDERAL & MILITARY SPECIFICATIONS:

DESIGN TO: FAA TSO-C144, DO-160D, D0-228, MIL-C-5541, MIL-E-5400, MIL-I-45208A, MIL-STD-810, AND SAE J1455

QUANTITY REQD	DESCRIPTION	PART NO	FINISH	REV
4				5
4				4
A/R				3
1				1

CONFORMALITY	SIZE (INCHES)	SHAPE	FREQ. BAND	LNA
CC: CONFORMAL/CURVED	C: CIRCULAR	C: CIRCULAR	1215 L1/L2	A: WITH LNA
CF: CONFORMAL/FLAT	S: SQUARE	S: SQUARE	15: L1 ONLY	AL: WITH LNA/LIMITER
NF: NOT CONFORMAL/FLAT	T: TRIANGULAR	T: TRIANGULAR		P: WITHOUT LNA
NC: NOT CONFORMAL/CURVED	H: HEXAGON	H: HEXAGON		P2: WITHOUT LNA, DUAL POLARIZATIONS
	R: RECTANGULAR	R: RECTANGULAR		

P/N: 2CC-4.5RG1215P2-XS-X

2. MOUNTING SCREWS ARE SUPPLIED BY ANTCOM CORPORATION

1. DIMENSIONS IN BRACKETS ARE IN MILLIMETERS [mm]

NOTES: UNLESS OTHERWISE SPECIFIED:

NUMBER OF ELEMENT	CABLE LENGTH	CONNECTOR	COLOR
X: NO CABLE	S: SMA; P: PINS	-1: GLOSS WHITE #1792 PER FED-STD-595B	
M: MAG. N. NOMAG.	M: MCX; MM: MMCX	-2: LUSTERLESS GRAY #3632 PER FED-STD-595B	
#: CABLE LENGTH (IN)	N: NB; N: N-Bulkhead	-3: OLIVE DRAB GREEN #34031 PER FED-STD-595B	
R: RIGHT ANGLE CON	T: T; TNC; TNC-Bulkhead	-4: LUSTERLESS BLACK #37038 PER FED-STD-595B	

UNLESS OTHERWISE SPECIFIED DIMENSIONS ARE IN INCHES ± 1/64 ± 1' 100 ± 0.005 ± 1'

REMOVE ALL BURRS BREAK EXTERNAL EDGES .005 TO .015 RADIUS ± .002 TO .010 ± .005 DATE ON A COMMON ± .005 MACHINED SURFACES ± .005 DO NOT SCALE DRAWING

ANTCOM CORP. TORRANCE, CALIFORNIA

2 ELEMENT CONFORMAL L1/L2 GPS RHCP-LHCP ANTENNA ARRAY (PAM)

3CVE12CC-4.5RG1215P2-XS-X

SCALE 1/1 SHEET 1 OF 1

Antenna Mounts: http://www.antcom.com/documents/catalogs/PeripheralAntennaProducts2.pdf
Amplifiers/Power Divider/Combiner/Filters: http://www.antcom.com/documents/catalogs/PeripheralAntennaProducts1.pdf