



GSM (810-996MHz) Antenna: P/N: 2BGSMV-P-XT-1, WIFI (2.4-2.5GHz) Antenna: P/N: 2BG24V-P-XT-1  
 Quad Band (0.810-2.5GHz) Antenna: P/N: 2BGQBV-P-XT-1, Wide Band (0.810-5.9GHz) Antenna: P/N: 2BGWBV-P-XT-1  
 Wide Band 2 (2.4-5.9GHz) Antenna: P/N: 2BGWB2V-P-XT-1, L/S-Band 2 (1.6-2.5GHz) Antenna: P/N: 2BGLSV-P-XT-1



FAA Approved Facility

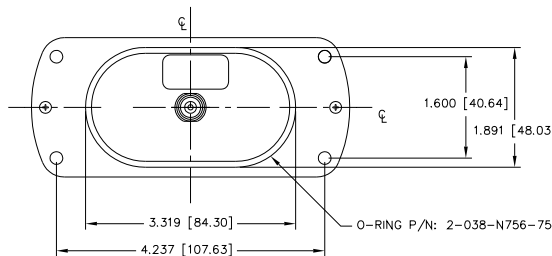
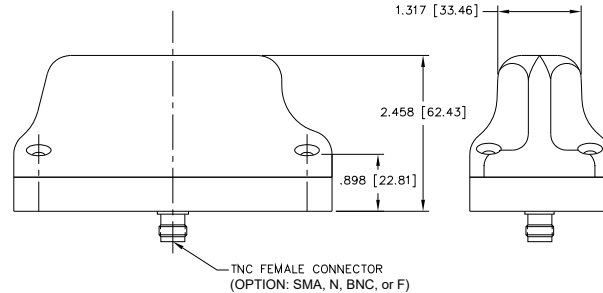
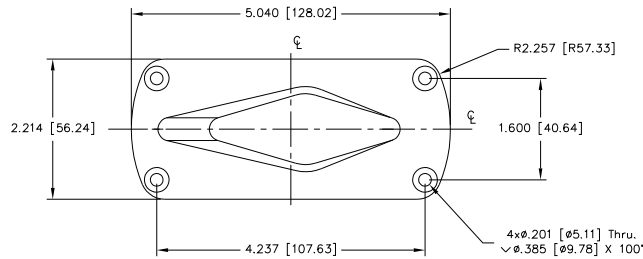
Antenna Mounts: <http://www.antcom.com/documents/catalogs/PeripheralAntennaProducts2.pdf>

ANTCOM CORPORATION . 367 Van Ness Way, Suite 602 . Torrance, CA 90501 . Tel: (310) 782-1076 . Fax: (310) 782-1086 . E-mail: [antennas@antcom.com](mailto:antennas@antcom.com) . <http://www.antcom.com>

NOTICE OF PROPRIETARY RIGHTS  
 THIS DOCUMENT CONTAINS CONFIDENTIAL, TECHNICAL DATA INCLUDING TRADE SECRETS PROPRIETARY TO ANTCOM CORP. DISCLOSURE OF THIS DATA TO ANY OTHER PARTY WITHOUT THE WRITTEN CONSENT OF ANTCOM CORP. IS STRICTLY PROHIBITED WITHOUT PRIOR WRITTEN CONSENT OF ANTCOM CORP.

**SPECIFICATIONS**

REVISIONS				
ZONE	REV	DESCRIPTION	DATE	APPROVED



**ELECTRICAL:**

FREQUENCY (GHz):	S-BAND (2400-2500)
RADIATION PATTERN:	OMNIDIRECTIONAL
POLARIZATION:	VERTICAL
VSWR:	2.0:1
IMPEDANCE:	50 ohms
ANTENNA GAIN (dBic):	> 2 dB
LIGHTNING PROTECTION:	DC GROUNDING

**MECHANICAL:**

**SIZE:** WIDTH 2.214 in. [56 mm], LENGTH 5.040 in. [128 mm], HEIGHT 2.458 in. [62.4 mm]  
**WEIGHT:** 14.9 oz. (422g)  
**FINISH:** SKYDROL RESISTANT POLYURETHANE ENAMEL BASE IRIDITE PER MIL-C-5541F  
**COLOR:** LUSTERLESS GRAY #36320 PER FED-STD-595B GLOSS WHITE #17925 PER FED-STD-595B OLIVE DRAB GREEN #34031 PER FED-STD-595B LUSTERLESS BLACK #37038 PER FED-STD-595B  
**MATERIAL:** 6061-T6 ALUMINUM ALLOY BASE COMPOSITE RADOME, IMPACT, ABRASION, UV, SOLVENT, SKYDROL RESISTANCE, AND FIRE RETARDANT  
**CONNECTOR:** TNC-FEMALE (OPTION: SMA, N, BNC)  
**MOUNTING:** FLAT FIXED MOUNT: O-RING & 10-32 MOUNTING SCREWS ARE PROVIDED

**ENVIRONMENTAL:**

**TEMPERATURE:** -67°F TO +185°F [-55°C TO +85°C]  
**ALTITUDE:** 70,000 ft.  
**VIBRATION:** 30 G's  
**LEAKAGE:** HERMETICALLY SEALED

**FEDERAL & MILITARY SPECIFICATIONS:**

FAA TSO-C144, DO-160D, D0-228, MIL-C-5541, MIL-STD-461E/F, SAE J1455 MIL-E-5400, MIL-I-45208A, MIL-STD-810, MIL-S-901D, MIL-STD-167-1A

SIZE	Frequency	Other Band	GPS/RX only LNA	DC BLOCK/LIMITER:
1: 2" SQ.	15: L1 GPS	C: (4.4-5.9) GHz	A2: WITH +20 dB LNA	DL WITH DC BLOCK & WITH LIMITER
1.9: 1.9" SQ.	1215: L1/L2 GPS	24: (2.4-2.5) GHz	A3: WITH +33 dB LNA	BLANK WITHOUT DC BLOCK NOR LIMITER
2: 2.6" DIA.	GS: L1/L2 GPS/Glonass	L: (1.6-2.0) GHz	P: WITHOUT LNA	
3: 3.5" DIA.		L/S: (1.6-2.5) GHz		
4: MINI ARINC		GSM: (810-996) MHz		
		QB: (0.810-2.5) GHz		
		WB: (0.810-5.9) GHz		
		WB2: (2.4-5.9) GHz		
5B: Blade, 53: Rod				

**P/N: 2BG24V-P-XT-1**

CABLE'S LENGTH:	CON:	COLOR:
X: NO CABLE	S: SMA; B: BNC; F: F	-1: GLOSS WHITE #17925 PER FED-STD-595B
M: WITH MAG MOUNT	M: MCK; MM: MMCX	-2: LUSTERLESS GRAY #36320 PER FED-STD-595B
W: CABLE LENGTH (IN)	N: NIN-Bulkhead	-3: OLIVE DRAB GREEN #34031 PER FED-STD-595B
R: RIGHT ANGLE CON	T: TB; TNC: TNC-Bulkhead	-4: LUSTERLESS BLACK #37038 PER FED-STD-595B

UNLESS OTHERWISE SPECIFIED DIMENSIONS ARE IN INCHES FRACTIONS DECIMALS ANGLES ± 1/64 .015 .015 ± 1°

TOLERANCE SHI PER AMS 1714.5 BREAK EXTERNAL EDGES .005 TO .015 SURFACE FINISH PER MIL-S-8879 D1.5 ON A MAXIMUM OF 25% MACHINED SURFACES

DO NOT SCALE DRAWING

ANTCOM CORP. TORRANCE CALIFORNIA

WIFI BLADE ANTENNA

DATE: 30 JAN 2016

SCALE: 1/1

SHEET: 1 OF 1

- 2. O-RING AND MOUNTING SCREWS ARE SUPPLIED BY ANTCOM CORPORATION
  - 1. DIMENSIONS IN BRACKETS ARE IN MILLIMETERS [mm]
- NOTES: UNLESS OTHERWISE SPECIFIED:

NMO Connector is Now Available for Some Antennas