

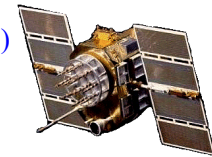


New Infinite Balun, Warped Half-Wavelength Dual Quadrifilar Helix Antennas with Better Gain & C/N (45to47), High Multipath Rejection, Broader Beamwidth (150 Deg), and Higher Front/Back Ratio (15dB) For Handheld, Mobile, UAV, Light Weight, and High Degree of Movement Applications

L1L2 GPS/Glonass + Iridium/Inmarsat Antennas

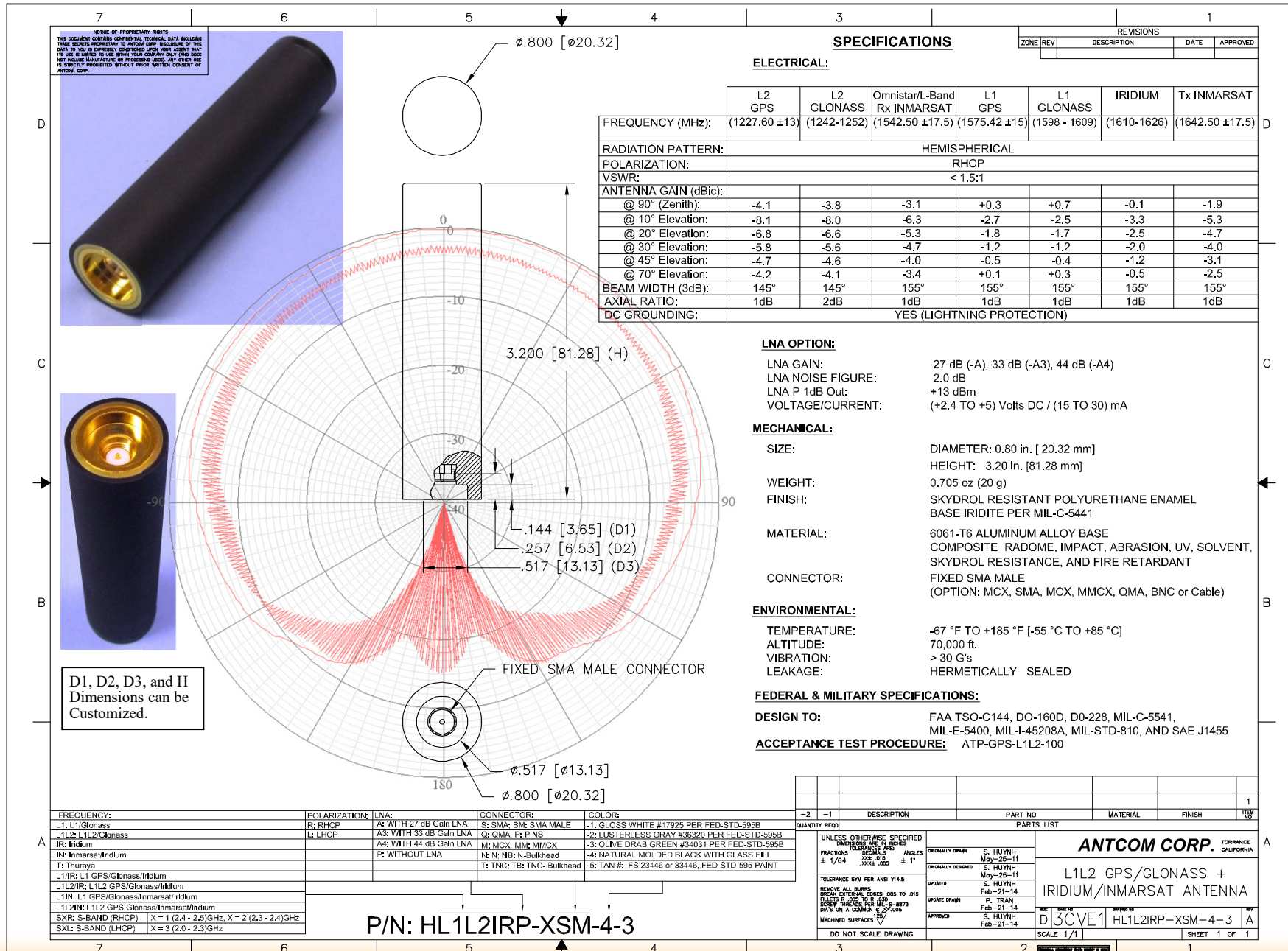
P/N: HL1L2IRA-XSM-4-3 (Active); P/N: HL1L2IRP-XSM-4-3 (Passive)

Antenna Mounts: <http://www.antcom.com/documents/catalogs/PeripheralAntennaProducts2.pdf>



ISO 9001:2008/FAA Approved Facility

ANTCOM CORPORATION . 367 Van Ness Way, #602 . Torrance, CA 90501 . Tel: (310) 782-1076 . Fax: (310) 782-1086 . E-mail: antennas@antcom.com . <http://www.antcom.com>



NMO Connector Option is Now Available for Some Antennas