



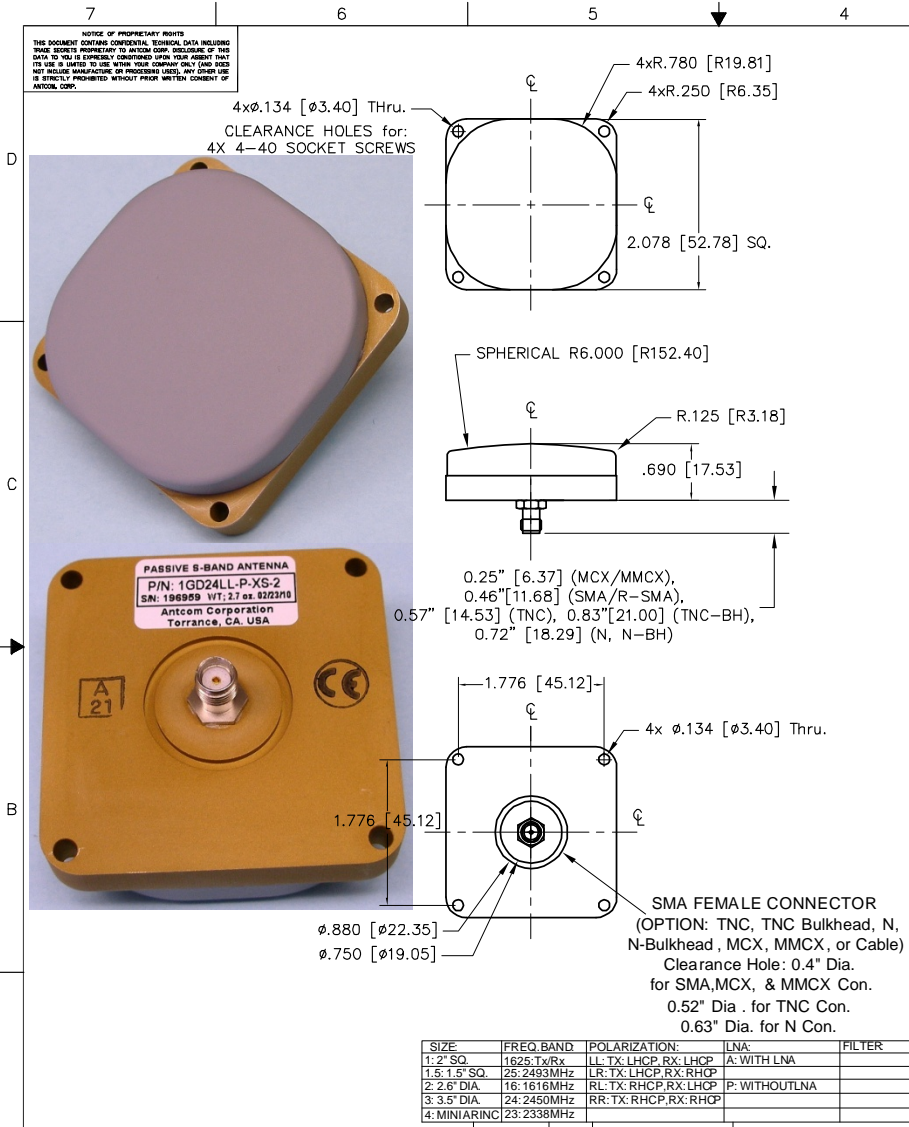
FAA Approved Facility

(1.25-1.35) GHz Antennas, P/N: 1GD1.25-1.35RR-P-XS-1 (RHCP); P/N: 1GD1.25-1.35LL-P-XS-1 (LHCP)
 (1.35-1.45) GHz Antennas, P/N: 1GD1.35-1.45RR-P-XS-1 (RHCP); P/N: 1GD1.35-1.45LL-P-XS-1 (LHCP)
 (2.00-2.30) GHz Antennas, P/N: 1GD2.00-2.30RR-P-XS-1 (RHCP); P/N: 1GD2.00-2.30LL-P-XS-1 (LHCP)
 (2.20-2.40) GHz Antennas, P/N: 1GD2.20-2.40RR-P-XS-1 (RHCP); P/N: 1GD2.20-2.40LL-P-XS-1 (LHCP)
 (2.40-2.50) GHz Antennas, P/N: 1GD2.40-2.50RR-P-XS-1 (RHCP); P/N: 1GD2.40-2.50LL-P-XS-1 (LHCP)
 (2.56-2.69) GHz Antennas, P/N: 1GD2.56-2.69RR-P-XS-2 (RHCP); P/N: 1GD2.56-2.69LL-P-XS-2 (LHCP)

Antenna Mounts/Adapters: <http://www.antcom.com/documents/catalogs/PeripheralAntennaProducts2.pdf>



ANTCOM CORPORATION . 367 Van Ness Way, Suite 602 . Torrance, CA 90501 . Tel: (310) 782-1076 . Fax: (310) 782-1086 . E-mail: antennas@antcom.com . <http://www.antcom.com>



ELECTRICAL:

SPECIFICATIONS		REVISIONS		
ZONE	REV	DESCRIPTION	DATE	APPROVED
FREQUENCY:		(2400 - 2500) MHz		SEE PART NO. BELOW
RADIATION PATTERN:		HEMISPHERICAL		
POLARIZATION:		Vertical/Horizontal		
VSWR:		< 1.5:1		
GAIN (dB):		4 ft G.P.	Free Space	
@ 90° (Zenith):		+4.6	+5.6	
@ 10° Elevation (Ave):		-1.1	-1.4	
@ 20° Elevation (Ave):		+2.2	+0.5	
@ 30° Elevation (Ave):		+2.2	+1.8	
@ 45° Elevation (Ave):		+3.4	+3.1	
@ 70° Elevation (Ave):		+4.4	+5.4	
BEAM WIDTH(3dB):		110°	+100°	
IMPEDANCE:		50 Ohms		
POWER HANDLING:		200 Watt		
DC GROUNDING		YES (LIGHTNING PROTECTION)		

MECHANICAL:

SIZE: LENGTH: 2.080 in. [52.78 mm], WIDTH: 2.080 in. [52.78 mm]
 HEIGHT: 0.690 in. [17.53 mm], 0.58" [14.73] (Optional for Passive)

WEIGHT: 2.88 oz. (82 g)

FINISH: SKYDROL RESISTANT POLYURETHANE ENAMEL
 BASE IRIDITE PER MIL-C-5441

MATERIAL: 6061-T6 ALUMINUM ALLOY BASE
 COMPOSITE RADOME, IMPACT, ABRASION, UV, SOLVENT, SKYDROL RESISTANCE, AND FIRE RETARDANT

CONNECTOR: SMA FEMALE
 (OPTION: TNC, TNC-Bulkhead, N, N-Bulkhead, MCX, MMCX, or Cable)

ENVIRONMENTAL:
 TEMPERATURE: -67 °F TO +185 °F [-55 °C TO +85 °C]
 ALTITUDE: 70,000 ft.
 VIBRATION: > 30 G's
 LEAKAGE: HERMETICALLY SEAL

FEDERAL & MILITARY SPECIFICATIONS:
DESIGN TO: FAA TSO-C144, DO-160D, D0-228, MIL-C-5541, MIL-E-5400, MIL-I-45208A, MIL-STD-810, AND SAE J1455
ACCEPTANCE TEST PROCEDURE: ATP-GPS-L1L2-100

SIZE	FREQ. BAND	POLARIZATION:	LNA:	FILTER
1: 2" SQ.	1625-Tx/Rx	LL: TX: LHCP, RX: LHCP	A: WITH LNA	
1.5: 1.5" SQ.	25: 2493MHz	LR: TX: LHCP, RX: RHCP		
2: 2.6" DIA.	16: 1616MHz	RL: TX: RHCP, RX: LHCP	P: WITHOUT LNA	
3: 3.5" DIA.	24: 2450MHz	RR: TX: RHCP, RX: RHCP		
4: MINIARINC	23: 2338MHz			

P/N: 1GD24LL-P-XS-X

2. ADHESIVE GASKET IS SUPPLIED BY ANTCOM CORPORATION
 1. DIMENSIONS IN BRACKETS ARE IN MILLIMETERS [mm]
 NOTES: UNLESS OTHERWISE SPECIFIED:

CABLE LENGTH	CONNECTOR	COLOR
X: NO CABLE	S: SMA; P: PINS	-1: GLOSS WHITE #1792SPER FED-STD-595B
M: WITH MAG. MOUNT	M: MCX; MM: MMCX	-2: LUSTERLESS GRAY #36320PER FED-STD-595B
F: CABLE LENGTH (IN)	N: N (Optional Bulkhead)	-3: OLIVE DRAB GREEN #34031PER FED-STD-595B
R: RIGHT ANGLE CON	T: TNC (Optional Bulkhead)	-4: LUSTERLESS BLACK #37036PER FED-STD-595B

QUANTITY	RECD	DESCRIPTION	PART NO	SPECIFICATION	MATERIAL	FINISH	ITEM NO
1		ADHESIVE GASKET	12345G-3M-1G				5
1							3
1							2
1							1
-2	-1						

UNLESS OTHERWISE SPECIFIED DIMENSIONS ARE IN INCHES
 FRACTIONS: DECIMALS: ANGLES
 ± 1/64 .005 .005 ± 1°
 TOLERANCE SURF PER ANSI Y14.5
 FINISH: ALL SURF: BZEAL EXTERNAL EDGES .005 TO .015
 REEF: .005 .015 .015
 SREW: #2-56 PER MIL-S-8879
 DR: 3 IN A CORNER R.250
 MACHINED SURFACES: TV
 DO NOT SCALE DRAWING

ANTCOM CORP. TORRANCE, CALIFORNIA
 OUTLINE DRAWING
 802.11
 ANTENNA
 D3CVE1 1GD24LL-P-XS-1
 SCALE 1/1 SHEET 1 OF 1