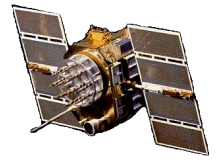




Active L1/L2 GPS Antennas, P/N: P/N: 1GD1215A-XS-X

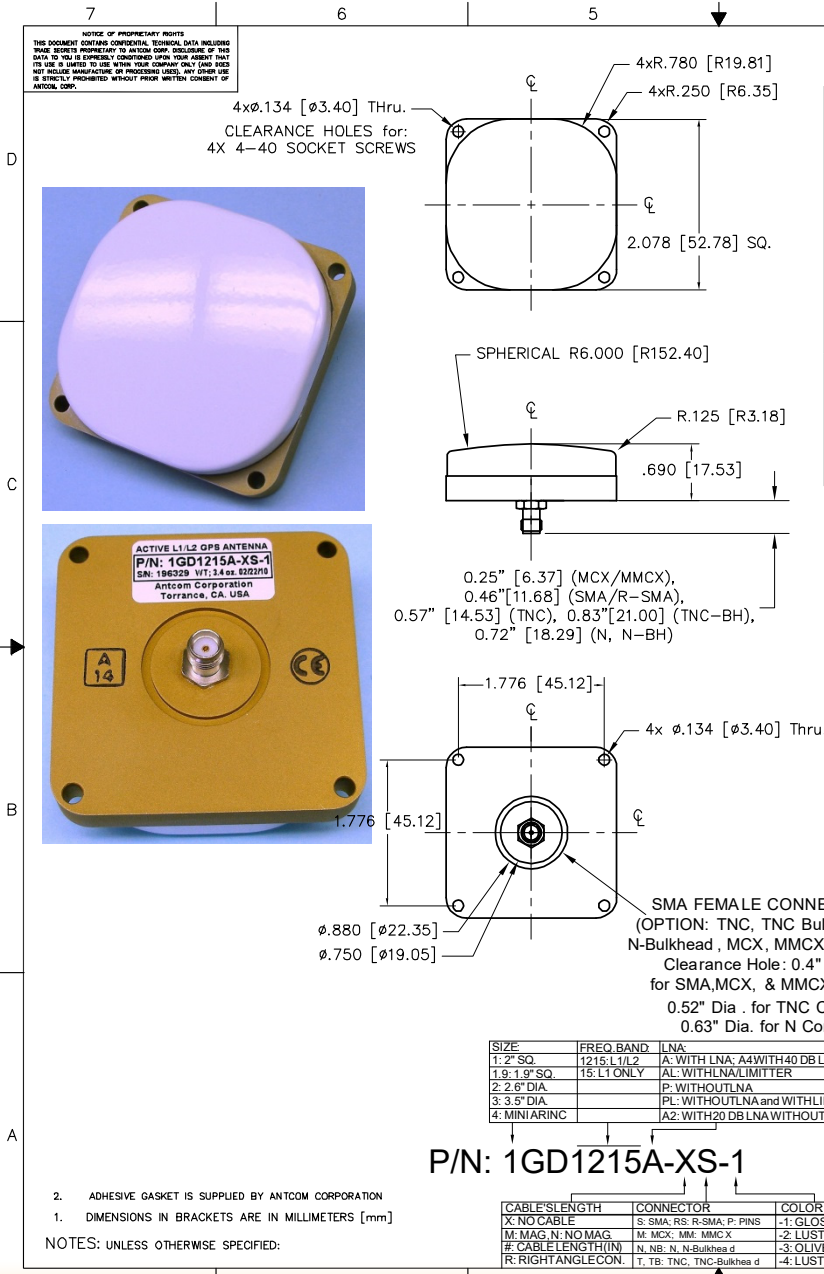
2" Square, Top Mount, Bottom Center Connector Configuration



ISO 9001:2008/FAA Approved Facility

Antenna Mounts: <http://www.antcom.com/documents/catalogs/PeripheralAntennaProducts2.pdf>

ANTCOM CORPORATION . 367 Van Ness Way, #602 . Torrance, CA 90501 . Tel: (310) 782-1076 . Fax: (310) 782-1086 . E-mail: antennas@antcom.com . <http://www.antcom.com>



SPECIFICATIONS

ELECTRICAL:

ZONE	REVISIONS		DATE	APPROVED
	REV	DESCRIPTION		
FREQUENCY: L1: (1575.42 ±15) MHz L2: (1227.60 ±15) MHz				
RADIATION PATTERN: HEMISPHERICAL				
POLARIZATION: RHCP				
VSWR: < 1.5:1				
IMPEDANCE: 50 ohms				
ANTENNA GAIN (dBic): Free Space 3 in G.P. 4 ft G.P. Free Space 3 in G.P. 4 ft G.P.				
@ 90° (ZENITH): +3.7 +4.7 +3.1 -1.7 +3.3 +4.5				
@ 10° Elevation: -2.9 -1.8 -1.9 -7.3 -3.8 -3.5				
@ 20° Elevation: -1.3 -0.3 +0.6 -6.2 -2.0 -0.8				
@ 30° Elevation: 0.0 +1.4 +1.7 -5.2 -0.5 +1.4				
@ 60-90° Elevation: >3.0 >3.9 >2.4 >-3.2 >2.7 >2.2				
BEAM WIDTH (3dB): 108 Deg. 114 Deg. 143 Deg. 100 Deg. 106 Deg. 74 Deg.				
AXIAL RATIO: 2 dB 2 dB				
LIGHTNING PROTECTION: DC GROUNDING				
LNA GAIN: 33 dB 35 dB				
LNA NOISE FIGURE: 3.0 dB 3.0 dB				
LNA P1dB Out: +13 dBm +13 dBm				
LNA DC POWER: 2.5V/20mA, 3V/29mA, 3.3V/35mA, (2.5-24V)/<50mA				
REJECTION @ (-50/+50) MHz: -41 dB / -59 dB -40 dB / -40 dB				
@ (-100/+100) MHz: < -65 dB < -65 dB				
POWER HANDLING: Passive: 100 W, Active: 1 W, Limiter: +50 dB in Max, +30 dB out Min				

MECHANICAL:

SIZE: LENGTH: 2.080 in. [52.78 mm], WIDTH: 2.080 in. [52.78 mm]
HEIGHT: 0.690 in. [17.53 mm], 0.58" [14.73] (Optional for Passive)

WEIGHT: 2.88 oz. (82 g)

FINISH: SKYDROL RESISTANT POLYURETHANE ENAMEL
BASE IRIDITE PER MIL-C-5441

MATERIAL: 6061-T6 ALUMINUM ALLOY BASE
COMPOSITE RADOME, IMPACT, ABRASION, UV, SOLVENT, SKYDROL RESISTANCE, AND FIRE RETARDANT

CONNECTOR: SMA FEMALE
(OPTION: TNC, TNC-Bulkhead, N, N-Bulkhead, MCX, MMCX, or Cable)

ENVIRONMENTAL:
TEMPERATURE: -67 °F TO +185 °F [-55 °C TO +85 °C]
ALTITUDE: 70,000 ft.
VIBRATION: > 30 G's
LEAKAGE: HERMETICALLY SEAL

FEDERAL & MILITARY SPECIFICATIONS:

DESIGN TO: FAA TSO-C144, DO-160D, D0-228, MIL-C-5541, MIL-E-5400, MIL-I-45208A, MIL-STD-810, AND SAE J1455

ACCEPTANCE TEST PROCEDURE: ATP-GPS-L1L2-100

QUANTITY	RECD	DESCRIPTION	PART NO	SPECIFICATION	MATERIAL	FINISH	ITEM NO
							5
1		ADHESIVE GASKET	12345G-3M-1G				3
1							2
1							1
-2	-1						

UNLESS OTHERWISE SPECIFIED
DIMENSIONS ARE IN INCHES
FRACTIONS DECIMALS ANGLES
± 1/64 ± .015 ± 1°
3000 ± .005

TOLERANCE 51M PER ANSI Y14.5
REF. DIM. SURF. BEING MEASURED TO .016
HOLD TO .001
SHEW THESES FOR MIL-8879
DAYS ON A COMB. Q. 250.006
MACHINED SURFACES

DO NOT SCALE DRAWING

ANTCOM CORP. TORRANCE CALIFORNIA
OUTLINE DRAWING
L1/L2 ACTIVE or PASSIVE
GPS ANTENNA
DWG NO: DJ3CVE111GD1215X-XX-X-1
DATE: Aug-25-09
SCALE: 1/1

NMO Connector Option is Now Available for Some Antennas