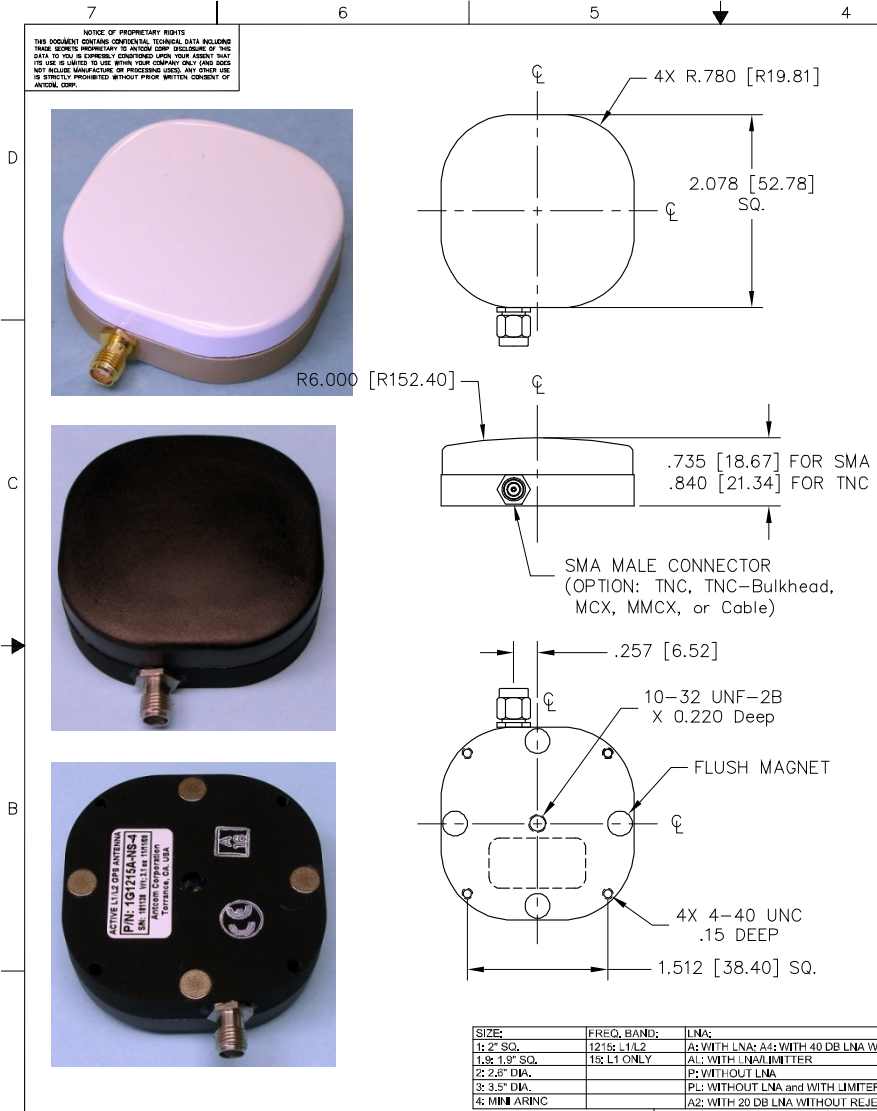


ANTCOM CORPORATION . 367 Van Ness Way, Suite 602 . Torrance, CA 90501 . Tel: (310) 782-1076 . Fax: (310) 782-1086 . E-mail: antennas@antcom.com . http://www.antcom.com



**ELECTRICAL:**

SPECIFICATIONS		REVISIONS		
FREQUENCY:	L1: (1575.42 ±12) MHz			
RADIATION PATTERN:	HEMISPHERICAL			
POLARIZATION:	RHCP			
VSWR:	2:1			
IMPEDANCE:	50 ohms			
ANTENNA GAIN (dBic):	Free Space	16 In G.P.	4 ft G.P.	
@ 90 ° (ZENITH):	+ 5.0	+ 2.5	+ 3.6	
@ 10 ° Elevation:	- 2.3	- 2.9	- 1.7	
@ 20 ° Elevation:	- 0.9	- 0.5	+ 1.0	
@ 30 ° Elevation:	+ 0.7	+ 1.6	+ 2.4	
@ 60 - 90 ° Elevation:	> 4.2	+4.7/+2.5	> 3.6	
BEAM WIDTH (3dB):	102 Deg.	107 Deg.	127 Deg.	
AXIAL RATIO:	2 dB			
LIGHTNING PROTECTION:	DC GROUNDING			
LNA GAIN (OPTIONAL):	33 dB			
LNA NOISE FIGURE:	2.4 dB			
LNA P1dB Out:	+13 dBm			
LNA DC POWER:	2.5V/20mA, 3V/20mA, 3.3V/20mA, (2.5-24)V/<30mA			
REJECTION @ (-50/+50) MHz	-45 dB / -70 dB			
@ (-100/+100) MHz	< -65 dB			

**MECHANICAL:**

SIZE:	LENGTH: 2.080 in. [ 52.78 mm], WIDTH: 2.080 in. [52.78 mm] HEIGHT: .735 in. [18.67 mm] FOR SMA .840 in. [21.34 mm] FOR TNC
WEIGHT:	2.88 oz. (82 g)
FINISH:	SKYDROL RESISTANT POLYURETHANE ENAMEL BASE IRIDITE PER MIL-C-5441F
MATERIAL:	6061-T6 ALUMINUM ALLOY BASE COMPOSITE RADOME, IMPACT, ABRASION, UV, SOLVENT, SKYDROL RESISTANCE, AND FIRE RETARDANT
CONNECTOR:	SMA MALE (OPTION: TNC, TNC-Bulkhead, MCX, MMCX, or Cable)

**ENVIRONMENTAL:**

TEMPERATURE:	-67 °F TO +185 °F [-55 °C TO +85 °C]
ALTITUDE:	70,000 ft.
VIBRATION:	> 30 G's
LEAKAGE:	HERMETICALLY SEAL

**FEDERAL & MILITARY SPECIFICATIONS:**

DESIGN TO:	FAA TSO-C144, DO-160D, D0-228, MIL-C-5541, MIL-E-5400, MIL-I-45208A, MIL-STD-810, AND SAE J1455
ACCEPTANCE TEST PROCEDURE:	ATP-GPS-L1L2-100

SIZE:	FREQ. BAND:	LNA:	1					3
1: 2" SQ.	121& L1L2	A: WITH LNA; A&: WITH 40 DB LNA WITHOUT REJECTION FILTERS	1					2
1.8x 1.8" SQ.	15 L1 ONLY	A1: WITH LNA/LIMITER	1					1
2: 2.6" DIA.		P: WITHOUT LNA			ADHESIVE GASKET	12345G-3M-1G		
3: 3.5" DIA.		PL: WITHOUT LNA and WITH LIMITER						
4: MIN ARINC		A2: WITH 20 DB LNA WITHOUT REJECTION FILTERS						

P/N: 1G15A-MNSM-1

CABLE'S LENGTH:	CONNECTOR:	COLOR:
MIN: FLUSH MAGNET	SM: SMA-M; S: SMA; RS: R-SMA;	-1: GLOSS WHITE #17925 PER FED-STD-595B
N: NO MAG.	M: MCX; MM: MMCX; P: PINS	-2: LUSTERLESS GRAY #36320 PER FED-STD-595B
R: RIGHT ANGLE CON.	T, TB: TNC, TNC-Bulkhead	-3: CAMO GREEN #34084 PER FED-STD-595B
		-4: LUSTERLESS BLACK #37038 PER FED-STD-595B
		-5: DESERT TAN #33446 PER FED-STD-595B

UNLESS OTHERWISE SPECIFIED DIMENSIONS ARE IN INCHES FRACTIONS: 16 DECIMALS: 100 ANGLES: ± 1/64 .002 .005 ± 1°	DRAWN: S. HUYNH May-29-01	<p><b>ANTCOM CORP.</b> TORRANCE, CALIFORNIA</p> <p>2in SQ. FLUSH MAGNETIC MOUNT, SIDE CONNECTOR L1 GPS ANTENNA</p> <p>D13CVE1 1G15A-MNSM-X A</p> <p>SCALE 1/1</p> <p>SHEET 1 OF 1</p>
TOLERANCE .5M PER ANSI Y14.5 REMOVE ALL BURRS BREAK EXTERNAL EDGES .005 TO .015 FILE TO .002 TO R .030 SREW SURFACES PER MIL-S-8879 DAYS ON A CORNER 4, 27, 005 MACHINED SURFACES 'Z'	ME: F. TRAY Dec-07-17	
DO NOT SCALE DRAWING	EE: S. HUYNH May-29-01	
	MFG: R. ROA Dec-07-17	
	QA: L. DISONGLIO Dec-07-17	
	APPROVED: D. REID Dec-07-17	

NOTES: UNLESS OTHERWISE SPECIFIED:

NMO Connector Option is Now Available for Some Antennas