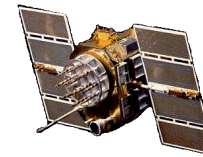




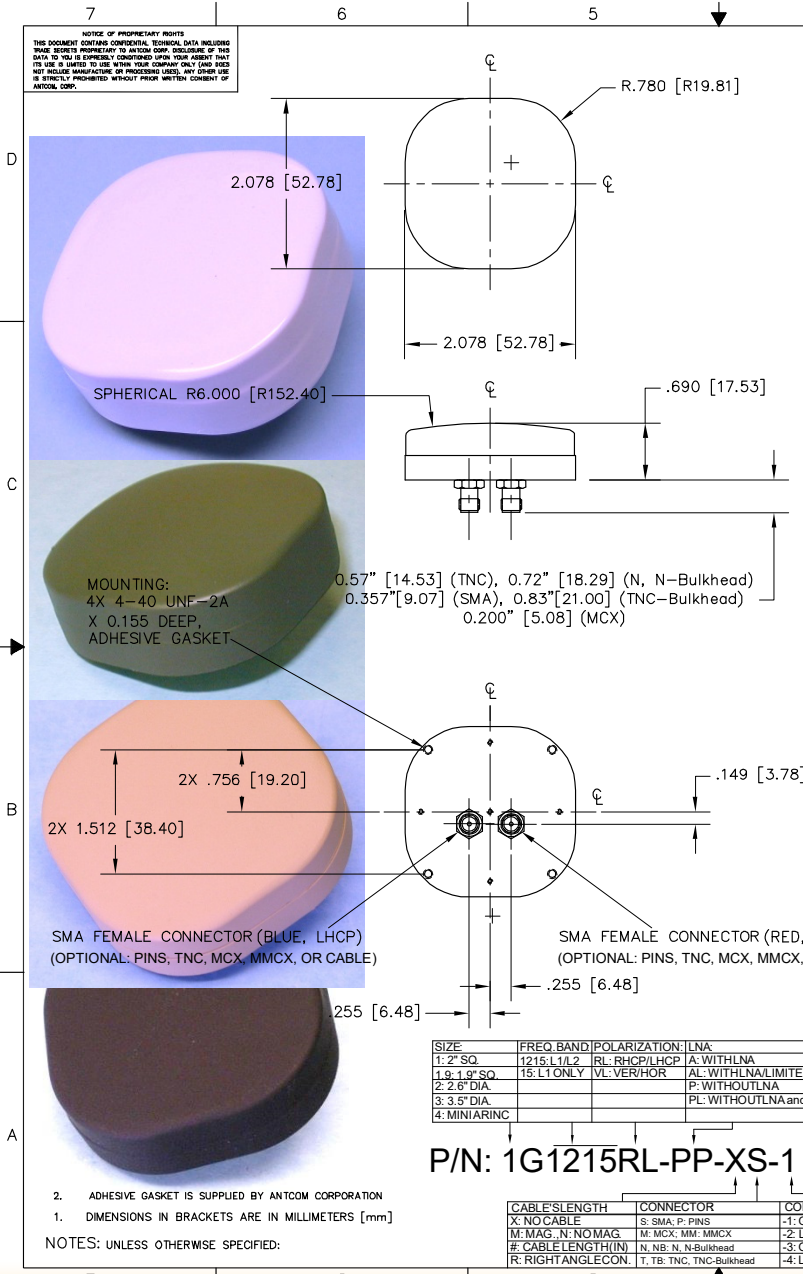
Dual Polarization (RHCP/LHCP) L1/L2GPS Antenna

P/N: 1G1215RL-PP-XS-X RevA
 2" Square Configurations with Back Mounting Option



ISO 9001:2008/FAA Approved Facility Antenna Mounts: <http://www.antcom.com/documents/catalogs/PeripheralAntennaProducts2.pdf>

ANTCOM CORPORATION . 367 Van Ness Way, #602 . Torrance, CA 90501 . Tel: (310) 782-1076 . Fax: (310) 782-1086 . E-mail: antennas@antcom.com . <http://www.antcom.com>



SPECIFICATIONS

ELECTRICAL:

FREQUENCY:	L1: (1575.42 ±12) MHz		L2: (1227.60 ±12) MHz			
	HEMISPHERICAL					
RADIATION PATTERN:	HEMISPHERICAL					
POLARIZATION:	RHCP/LHCP		RHCP/LHCP			
VSWR:	< 1.5:1		< 1.5:1			
IMPEDANCE:	50 ohms		50 ohms			
ANTENNA GAIN (dBic):	Free Space	3 in G.P.	4 ft G.P.	Free Space	3 in G.P.	4 ft G.P.
@ 90° (ZENITH):	+3.7	+4.7	+3.1	-1.7	+3.3	+4.5
@ 10° Elevation:	-2.9	-1.8	-1.9	-7.3	-3.8	-3.5
@ 20° Elevation:	-1.3	-0.3	+0.6	-6.2	-2.0	-0.8
@ 30° Elevation:	0.0	+1.4	+1.7	-5.2	-0.5	+1.4
@ 60 - 90° Elevation:	> 3.0	> 3.9	> 2.4	> -3.2	> 2.7	> 2.2
BEAM WIDTH(3dB):	108 Deg.	114 Deg.	143 Deg.	100 Deg.	106 Deg.	74 Deg.
AXIAL RATIO:	2 dB		2 dB			
LIGHTNING PROTECTION:	DC GROUNDING					
LNA GAIN OPTION:	33 dB		35 dB			
LNA NOISE FIGURE:	3.0 dB		3.0 dB			
LNA P1dB Out:	+13 dBm		+13 dBm			
LNA DC POWER:	2.5V/20mA, 3V/29mA, 3.3V/35mA, (2.5-24)V/<50mA					
REJECTION@ (-50/+50)MHz:	-41 dB / -59 dB		-40 dB / -40 dB			
@ (-100/+100)MHz:	< -65 dB		< -65 dB			
POWER HANDLING:	1 Watt CW, Optional: 10 Watts 1 microsec Pulse (-AL-)					

MECHANICAL:

SIZE: LENGTH: 2.080 in. [52.78 mm], WIDTH: 2.080 in. [52.78 mm]
 HEIGHT: 0.690 in. [17.53 mm], 0.58" [14.73] (Optional for Passive)

WEIGHT: 2.88 oz. (82 g)

FINISH: SKYDROL RESISTANT POLYURETHANE ENAMEL
 BASE IRIDITE PER MIL-C-5441

MATERIAL: 6061-T6 ALUMINUM ALLOY BASE
 COMPOSITE RADOME, IMPACT, ABRASION, UV, SOLVENT, SKYDROL RESISTANCE, AND FIRE RETARDANT

CONNECTOR: SMA FEMALE
 (OPTION: TNC, TNC-Bulkhead, N, N-Bulkhead, MCX, MMCX, or Cable)

ENVIRONMENTAL:
 TEMPERATURE: -67 °F TO +185 °F [-55 °C TO +85 °C]
 ALTITUDE: 70,000 ft.
 VIBRATION: > 30 G's
 LEAKAGE: HERMETICALLY SEAL

FEDERAL & MILITARY SPECIFICATIONS:
 DESIGN TO: FAA TSO-C144, DO-160D, DO-228, MIL-C-5541, MIL-E-5400, MIL-I-45208A, MIL-STD-810, AND SAE J1455

ACCEPTANCE TEST PROCEDURE: ATP-GPS-L1L2-100

SIZE	FREQ BAND	POLARIZATION	LNA
1: 2" SQ	1215, L1/L2	RL: RHCP/LHCP	A: WITH LNA
1.9: 1.9" SQ	15: L1 ONLY	VL: VER/HOR	AL: WITH LNA LIMITER
2: 2.6" DIA			P: WITHOUT LNA
3: 3.3" DIA			PL: WITHOUT LNA and THINNER (HEIGHT = 0.58")
4: MINI ARINC			

P/N: 1G1215RL-PP-XS-1

CABLE LENGTH	CONNECTOR	COLOR
X: NO CABLE	S: SMA; P: PINS	-1: GLOSS WHITE #17925 PER FED-STD-595B
M: MAG. N: NO MAG	M: MCX; MM: MMCX	-2: LUSTERLESS GRAY #36320 PER FED-STD-595B
#: CABLE LENGTH (IN)	N: NB; N: N-Bulkhead	-3: OLIVE DRAB GREEN #34031 PER FED-STD-595B
R: RIGHT ANGLE CON.	T: TB; TNC; TNC-Bulkhead	-4: LUSTERLESS BLACK #37038 PER FED-STD-595B

QUANTITY	REV	DESCRIPTION	PART NO	SPECIFICATION	MATERIAL	FINISH	ITEM NO
1		ADHESIVE GASKET	12345G-3M-1G				5
1							3
1							2
1							1
-2	-1						

UNLESS OTHERWISE SPECIFIED DIMENSIONS ARE IN INCHES TOLERANCES ARE FRACTIONS DECIMALS ANGLES ± 1/64 .005 .015 ± 1°

DRIVER: M. BOAS 01-05-29

DESIGNED BY: S. HUYNH 01-05-29

APPROVED BY: S. HUYNH 01-05-29

SCALE 1/1

SHEET 1 OF 1

ANTCOM CORP. TORRANCE, CALIFORNIA

OUTLINE DRAWING L1/L2 ACTIVE or PASSIVE RHCP/LHCP GPS ANTENNA

D3CVE1 1G1215RL-PP-XS-X

2. ADHESIVE GASKET IS SUPPLIED BY ANTCOM CORPORATION
 1. DIMENSIONS IN BRACKETS ARE IN MILLIMETERS [mm]
 NOTES: UNLESS OTHERWISE SPECIFIED:

NMO Connector Option is Now Available for Some Antennas