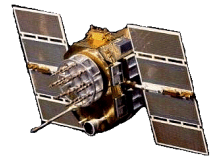




L1/L2 GPS Antennas, P/N: 1G1215P-XRS-4-ACM

2.0" Square, Right Angle SMA, Back Mount Configurations



ISO 9001:2008/FAA Approved Facility Antenna Mounts: <http://www.antcom.com/documents/catalogs/PeripheralAntennaProducts2.pdf>

ANTCOM CORPORATION . 367 Van Ness Way, #602 . Torrance, CA 90501 . Tel: (310) 782-1076 . Fax: (310) 782-1086 . E-mail: antennas@antcom.com . <http://www.antcom.com>

NOTICE OF PROPRIETARY RIGHTS
THIS DOCUMENT CONTAINS CONFIDENTIAL TECHNICAL DATA INCLUDING TRADE SECRETS PROPRIETARY TO ANTCOM CORP. DISCLOSURE OF THIS DATA TO YOU IS EXPRESSLY CONDITIONED UPON YOUR ASSENT THAT ITS USE IS LIMITED TO USE WITHIN YOUR COMPANY ONLY (AND DOES NOT INCLUDE MANUFACTURE OR REPRODUCTION). ANY OTHER USE IS EXPRESSLY PROHIBITED WITHOUT PRIOR WRITTEN CONSENT OF ANTCOM CORP.

REVISIONS

ZONE	REV	DESCRIPTION	DATE	APPROVED

ELECTRICAL:

	L1: (1575.42 ±12) MHz	L2: (1227.60 ±12) MHz
FREQUENCY:		
RADIATION PATTERN:	HEMISPHERICAL	
POLARIZATION:	RHCP	RHCP
VSWR:	< 1.5:1	< 1.5:1
IMPEDANCE:	50 ohms	
ANTENNA GAIN (dBic):	Free Space 24" Dia. Tube, 2 ft Long	Free Space 24" Dia. Tube, 2 ft Long
@ 90° (ZENITH):	+ 4.5 + 4.2	- 2.5 + 4.6
@ 10° Elevation:	- 1.5 - 3.0	- 4.3 - 2.1
@ 20° Elevation:	0.0 0.9	- 3.0 - 0.9
@ 30° Elevation:	+ 1.1 + 1.1	- 1.5 + 0.4
@ 60 - 90° Elevation:	> 3.0 > 2.8	> 1.7 > 3.1
BEAM WIDTH (3dB):	112 Deg.	104 Deg.
AXIAL RATIO:	2 dB	2 dB
LIGHTNING PROTECTION:	DC GROUNDING	

LNA OPTION

LNA GAIN:	33 dB	35 dB
LNA NOISE FIGURE:	3.0 dB	3.0 dB
LNA P1dB Out:	+13 dBm	+13 dBm
LNA DC POWER:	2.5V/20mA, 3V/29mA, 3.3V/35mA, (2.5-24V)/<50mA	
REJECTION @ (-50/+50) MHz	-41 dB / -59 dB	-40 dB / -40 dB
@ (-100/+100) MHz	< -65 dB	< -65 dB
POWER HANDLING:	1 Watt CW, Optional: 10 Watts 1 microsec Pulse (-AL-)	

MECHANICAL:

SIZE: LENGTH: 2.080 in. [52.78 mm], WIDTH: 2.080 in. [52.78 mm]
 HEIGHT: 0.655 in. [16.64 mm]
 WEIGHT: 2.88 oz. (82 g)
 FINISH: SKYDROLRESISTANTPOLYURETHANEENAMEL
 BASE IRIDITE PER MIL-C-5441
 MATERIAL: 6061-T6ALUMINUMALLOYBASE
 COMPOSITE RADOME, IMPACT, ABRASION, UV, SOLVENT,
 SKYDROLRESISTANCE, AND FIRE RETARDANT
 CONNECTOR: RIGHT ANGLE SMA FEMALE
 (OPTION: TNC, TNC-Bulkhead, N, N-Bulkhead,
 MCX, MMCX, or Cable)

ENVIRONMENTAL:

TEMPERATURE: -67 °F TO +185 °F [-55 °C TO +85 °C]
 ALTITUDE: 70,000ft.
 VIBRATION: > 30 G's
 LEAKAGE: HERMETICALLYSEAL

FEDERAL & MILITARY SPECIFICATIONS

DESIGN TO: FAA TSO-C144, DO-160D, D0-228, MIL-C-5541,
 MIL-E-5400, MIL-I-45208A, MIL-STD-810 AND SAE J1455

ACCEPTANCE TEST PROCEDURE ATP-GPS-L1L2-100

QTY	DESCRIPTION	PART NO	SPECIFICATION	MATERIAL	FINISH	REV
1	ADHESIVE GASKET	12345G-3M-1G				5
1						3
1						2
1						1

UNLESS OTHERWISE SPECIFIED
 DIMENSIONS ARE IN INCHES
 FRACTIONS DECIMALS ANGLES
 1/16 0.0625 0.125 0.25 0.5 1.0 2.0 3.0 4.0 5.0 6.0 8.0 10.0 12.0 15.0 20.0 25.0 30.0 36.0 45.0 60.0 90.0 120.0 150.0 180.0

TOLERANCE 51M PER ANSI Y14.5
 UNLESS OTHERWISE SPECIFIED
 DIMENSIONS ARE IN INCHES
 FRACTIONS DECIMALS ANGLES
 1/16 0.0625 0.125 0.25 0.5 1.0 2.0 3.0 4.0 5.0 6.0 8.0 10.0 12.0 15.0 20.0 25.0 30.0 36.0 45.0 60.0 90.0 120.0 150.0 180.0

DO NOT SCALE DRAWING

ANTCOM CORP. TORRANCE CALIFORNIA

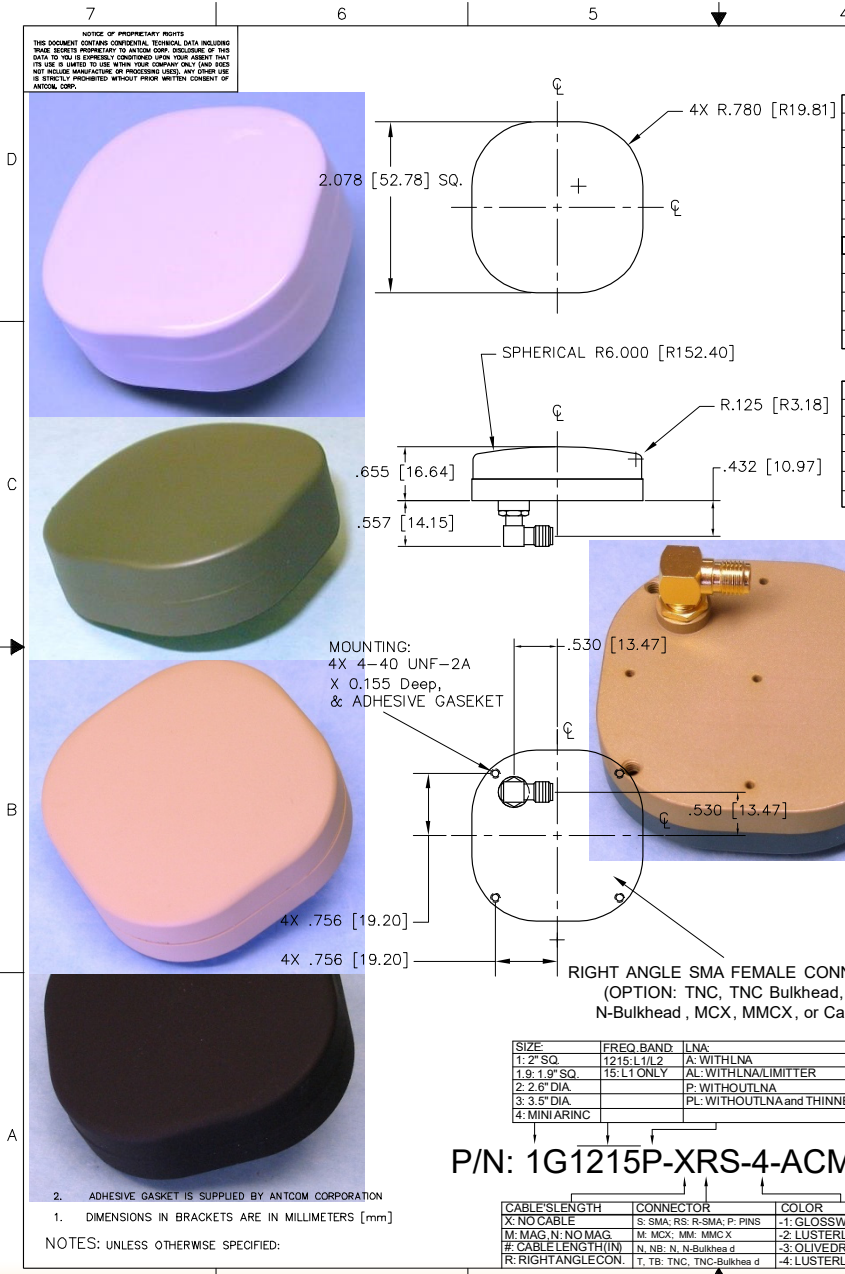
OUTLINE DRAWING
 L1/L2 GPS ANTENNA
 for MALT, ACM & OTHERS

DATE: 11/11/09
 DRAWN BY: M. BOAS
 DEC-03-04

APPROVED BY: S. HUYNH
 DEC-03-04

CAP FILE NO: []

SCALE: 1/1 SHEET 1 OF 1



P/N: 1G1215P-XRS-4-ACM

SIZE	FREQ BAND	LNA
1: 2" SQ.	1215: L1/L2	A: WITH LNA
1.9: 1.9" SQ.	15: L1 ONLY	AL: WITH LNA LIMITER
2: 2.6" DIA.		P: WITHOUT LNA
3: 3.5" DIA.		PL: WITHOUT LNA and THINNER (0.58" THICK)
4: MINI ARINC		

CABLE LENGTH	CONNECTOR	COLOR
X: NO CABLE	S: SMA; RS: R-SMA; P: PINS	-1: GLOSS WHITE #17925 PER FED-STD-595B
M: MAG. N. NO MAG.	M: MCX; MM: MMCX	-2: LUSTERLESS GRAY #36320 PER FED-STD-595B
#: CABLE LENGTH (IN)	N: NB; N: N-Bulkhead	-3: OLIVE DRAB GREEN #34031 PER FED-STD-595B
R: RIGHT ANGLE CON.	T: TNC; TNC-Bulkhead	-4: LUSTERLESS BLACK #37038 PER FED-STD-595B

2. ADHESIVE GASKET IS SUPPLIED BY ANTCOM CORPORATION

1. DIMENSIONS IN BRACKETS ARE IN MILLIMETERS [mm]

NOTES: UNLESS OTHERWISE SPECIFIED:

NMO Connector Option is Now Available for Some Antennas