



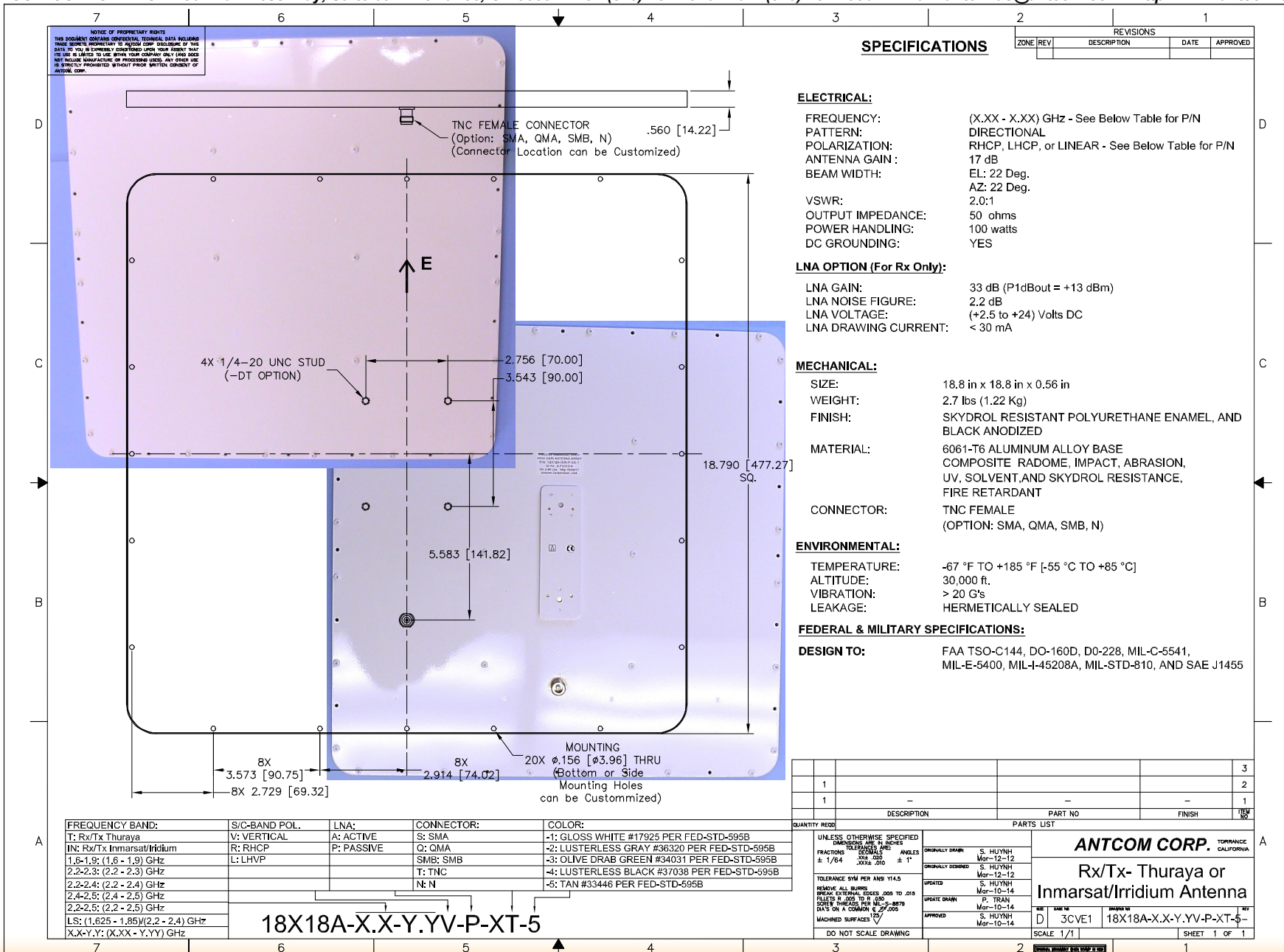
FAA Approved Facility

New High Gain Array Antenna

P/N: 18X18A-TL-P-XT-1 (Thuraya); P/N: 18X18A-INR-P-XT-1 (Inmarsat/Iridium)
 P/N: 18X18A-1.6-1.9V-P-XT-1 (1.6 - 1.9 GHz); P/N: 18X18A-2.2-2.3V-P-XT-1 (2.2 - 2.3 GHz)
 P/N: 18X18A-2.2-2.4V-P-XT-1 (2.2 - 2.4 GHz); P/N: 18X18A-2.2-2.5V-P-XT-1 (2.2 - 2.5 GHz)
 P/N: 18X18A-2.4-2.5V-P-XT-1 (2.4 - 2.5 GHz); P/N: 18X18A-LSV-P-XT-1 ((1.625 - 1.85)/(2.2 - 2.4) GHz)
 Antenna Mounts: <http://www.antcom.com/documents/catalogs/PeripheralAntennaProducts2.pdf>



ANTCOM CORPORATION . 367 Van Ness Way, Suite 602 . Torrance, CA 90501 . Tel: (310) 782-1076 . Fax: (310) 782-1086 . E-mail: antennas@antcom.com . <http://www.antcom.com>



SPECIFICATIONS

| REVISIONS | | | |
|-----------|-----|-------------|------|
| ZONE | REV | DESCRIPTION | DATE |
| | | | |

ELECTRICAL:
 FREQUENCY: (X.XX - X.XX) GHz - See Below Table for P/N
 PATTERN: DIRECTIONAL
 POLARIZATION: RHCP, LHCP, or LINEAR - See Below Table for P/N
 ANTENNA GAIN: 17 dB
 BEAM WIDTH: EL: 22 Deg.
 AZ: 22 Deg.
 VSWR: 2.0:1
 OUTPUT IMPEDANCE: 50 ohms
 POWER HANDLING: 100 watts
 DC GROUNDING: YES

LNA OPTION (For Rx Only):
 LNA GAIN: 33 dB (P1dBout = +13 dBm)
 LNA NOISE FIGURE: 2.2 dB
 LNA VOLTAGE: (+2.5 to +24) Volts DC
 LNA DRAWING CURRENT: < 30 mA

MECHANICAL:
 SIZE: 18.8 in x 18.8 in x 0.56 in
 WEIGHT: 2.7 lbs (1.22 Kg)
 FINISH: SKYDROL RESISTANT POLYURETHANE ENAMEL, AND BLACK ANODIZED
 MATERIAL: 6061-T6 ALUMINUM ALLOY BASE COMPOSITE RADOME, IMPACT, ABRASION, UV, SOLVENT, AND SKYDROL RESISTANCE, FIRE RETARDANT
 CONNECTOR: TNC FEMALE (OPTION: SMA, QMA, SMB, N)

ENVIRONMENTAL:
 TEMPERATURE: -67 °F TO +185 °F [-55 °C TO +85 °C]
 ALTITUDE: 30,000 ft.
 VIBRATION: > 20 G's
 LEAKAGE: HERMETICALLY SEALED

FEDERAL & MILITARY SPECIFICATIONS:
DESIGN TO: FAA TSO-C144, DO-160D, D0-228, MIL-C-5541, MIL-E-5400, MIL-I-45208A, MIL-STD-810, AND SAE J1455

| FREQUENCY BAND: | S/C-BAND POL. | LNA: | CONNECTOR: | COLOR: |
|------------------------------------|---------------|------------|------------|--|
| T: Rx/Tx Thuraya | V: VERTICAL | A: ACTIVE | S: SMA | -1: GLOSS WHITE #17925 PER FED-STD-595B |
| IN: Rx/Tx Inmarsat/Iridium | R: RHCP | P: PASSIVE | Q: QMA | -2: LUSTERLESS GRAY #36320 PER FED-STD-595B |
| 1.6-1.9: (1.6 - 1.9) GHz | L: LHCP | | SMB: SMB | -3: OLIVE DRAB GREEN #34031 PER FED-STD-595B |
| 2.2-2.3: (2.2 - 2.3) GHz | | | T: TNC | -4: LUSTERLESS BLACK #37038 PER FED-STD-595B |
| 2.2-2.4: (2.2 - 2.4) GHz | | | N: N | -5: TAN #33446 PER FED-STD-595B |
| 2.4-2.5: (2.4 - 2.5) GHz | | | | |
| 2.2-2.5: (2.2 - 2.5) GHz | | | | |
| LS: (1.625 - 1.85)/(2.2 - 2.4) GHz | | | | |
| X.X-Y.Y: (X.XX - Y.YY) GHz | | | | |

18X18A-X.X-Y.YV-P-XT-5

| QUANTITY | DESCRIPTION | PART NO | FINISH | REV |
|----------|-------------|---------|--------|-----|
| 1 | | | | 3 |
| 1 | | | | 2 |
| 1 | | | | 1 |

| UNLESS OTHERWISE SPECIFIED DIMENSIONS ARE IN INCHES FRACTIONS TO DECIMALS ANGLES ± 1/64 .002 .010 ± .1° | ANTCOM CORP. |
|--|--|
| TOLERANCE 5VM PER ANSI Y14.5 BREAK EXTERNAL EDGES .005 TO .015 FILETS R .010 TO R .030 SLOPE 1:20 PER MIL-STD-8878 DAVIS OR A COMMON 2:1 SLOPE MACHINED SURFACES ±.002 | ANTCOM CORP. TORRANCE, CALIFORNIA Rx/Tx- Thuraya or Inmarsat/Iridium Antenna D 3CVE1 18X18A-X.X-Y.YV-P-XT-5 SCALE 1/1 SHEET 1 OF 1 |

NMO Connector is Now Available for Some Antennas