



FAA Approved Facility

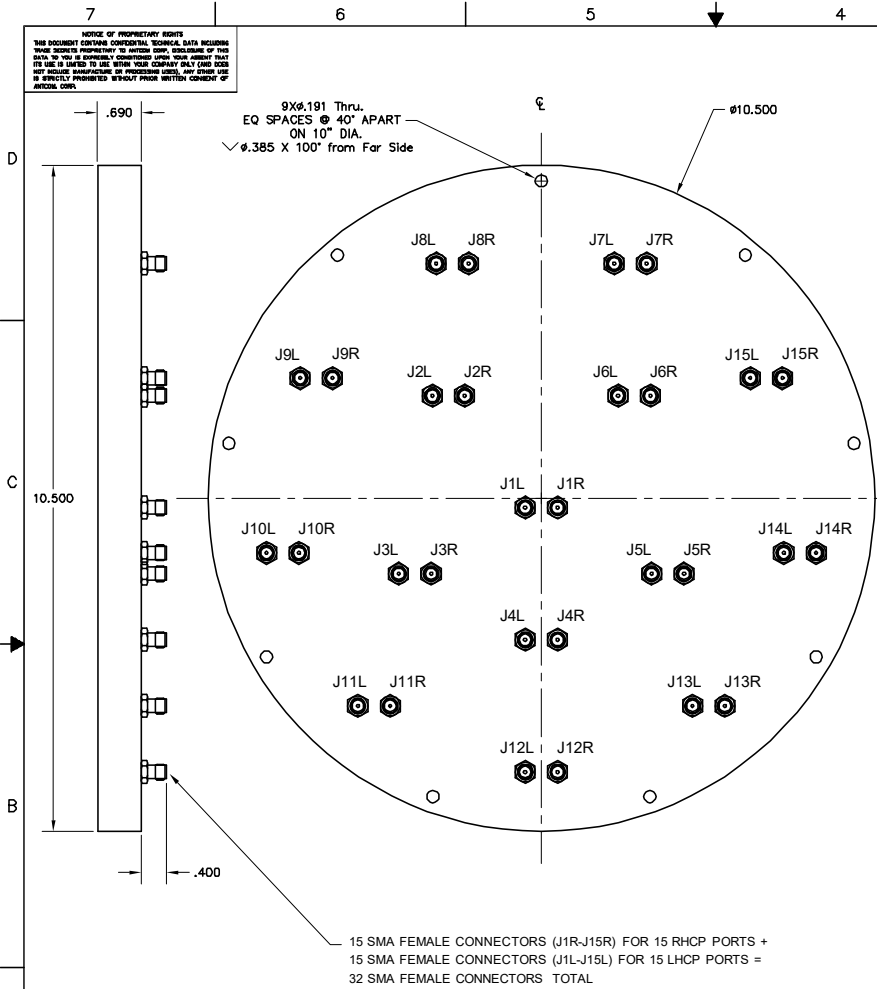
15-Element-30-Channel (RHCP/LHCP) CRPA L1/L2 GPS Antenna Array (10.5" Dia. x 0.7" Thick), P/N: 15NF-10.5CG1215P-XS-X

"-PL-" or "-AL-" for Limiter Options for High Power Pulse Protection



ANTCOM CORPORATION . 367 Van Ness Way, Suite 602 . Torrance, CA 90501 . Tel: (310) 782-1076 . Fax: (310) 782-1086 . E-mail: antennas@antcom.com . http://www.antcom.com

Wide Band GNSS Option Is Available



SPECIFICATIONS

ELECTRICAL:

	L1: (1575.42 ±12) MHz			L2: (1227.60 ±12) MHz		
FREQUENCY:						
RADIATION PATTERN:	HEMISPHERICAL					
POLARIZATION:	RHCP			RHCP		
VSWR:	< 1.5:1			< 1.5:1		
IMPEDANCE:	50 ohms			50 ohms		
ANTENNA ELEMENT GAIN (dBic):	Free Space	3.5 in Dia.	4 ft G.P.	Free Space	3.5 in Dia.	4 ft G.P.
@ 90° (ZENITH):	+4.5	+5.4	+2.4	+2.5	+4.1	+5.6
@ 10° Elevation:	-1.5	-1.6	-1.7	-4.3	-3.2	-2.8
@ 20° Elevation:	0.0	0.0	+0.9	-3.0	-1.6	+0.5
@ 30° Elevation:	+1.1	+1.3	+2.0	-1.5	-0.3	+2.4
@ 60-90° Elevation:	>3.0	>4.2	>2.5	>1.7	>2.7	>3.6
BEAM WIDTH (3dB):	112 Deg.	102 Deg.	145 Deg.	104 Deg.	93 Deg.	80 Deg.
AXIAL RATIO:	2 dB			2 dB		
LIGHTNING PROTECTION:	DC GROUNDING					
POWER HANDLING:	200 Watt CW					

MECHANICAL:

SIZE: DIAMETER: 10.500"
HEIGHT: 0.690 in. [17.53 mm]

WEIGHT: XX oz. (XX Kg)

FINISH: SKYDROL RESISTANT POLYURETHANE ENAMEL
BASE IRIDITE PER MIL-C-5441

MATERIAL: 6061-T6 ALUMINUM ALLOY BASE
COMPOSITE RADOME, IMPACT, ABRASION, UV, SOLVENT,
SKYDROL RESISTANCE, AND FIRE RETARDANT

CONNECTOR: SMA FEMALE
(OPTION: TNC, TNC Bulkhead, N, N Bulkhead,
MCX, MMCX, or Cable)

ENVIRONMENTAL:

TEMPERATURE: -67 °F TO +185 °F [-55 °C TO +85 °C]

ALTITUDE: 70,000 ft.

VIBRATION: > 30 G's

LEAKAGE: HERMETICALLY SEAL

FEDERAL & MILITARY SPECIFICATIONS:

DESIGN TO: FAA TSO-C144, DO-160D, D0-228, MIL-C-5541,
MIL-E-5400, MIL-I-45208A, MIL-STD-810, AND SAE J1455

ACCEPTANCE TEST PROCEDURE: ATP-GPS-L1L2-100

QUANTITY REQD	DESCRIPTION	PART NO	FINISH	REF
4	MOUNTING SCREWS: 10-32, 3/4"	MS24693C274	-	5
A/R	WASHER, CUSTOM C'SINK	3G15P1001-6	-	3
1	ADHESIVE GASKET	12345G-3M-3G	-	1
-2				

CONFORMALITY:	SIZE (INCHES):	SHAPE:	FREQ. BAND:	LNA:
CC: CONFORMAL/CURVED		C: CIRCULAR	1215: L1/L2	A: WITH LNA
CF: CONFORMAL/FLAT		S: SQUARE	15: L1 ONLY	AL: WITH LNA/LIMITER
NF: NOT CONFORMAL/FLAT		T: TRIANGULAR		P: WITHOUT LNA
NC: NOT CONFORMAL/CURVED		H: HEXAGON		
		R: RECTANGULAR		

P/N: 15NF-10.5CG1215P-XS-4

1. DIMENSIONS IN BRACKETS ARE IN MILLIMETERS [mm]
NOTES: UNLESS OTHERWISE SPECIFIED:

NUMBER OF ELEMENT:	CABLE'S LENGTH:	CONNECTOR:	COLOR:
X: NO CABLE	S: SMA: P: PINS	-1: GLOSS WHITE #17925 PER FED-STD-595B	
M: MAG. N: NO MAG	M: MCX: MM: MMCX	-2: LUSTERLESS GRAY #38320 PER FED-STD-595B	
F: CABLE LENGTH (IN)	N: NB: N-Bulkhead	-3: OLIVE DRAB GREEN #34031 PER FED-STD-595B	
R: RIGHT ANGLE CON.	T: TB: TNC: TNC-Bulkhead	-4: LUSTERLESS BLACK #37038 PER FED-STD-595B	

UNLESS OTHERWISE SPECIFIED
DIMENSIONS ARE IN INCHES
FRACTIONS TO BE DECIMALS
± 1/64
± 0.005
± 1°

TOLERANCE 5% PER ANG 11.4.6
REMOVE ALL BURRS
BREAK OFF EXTERNAL EDGES .000 TO .010
CLEAN & POLISH TO SPEC
CHECK THREADS PER DIA. 1.000
DATE ON A COMMON 5/27/08
MACHINED SURFACES

DO NOT SCALE DRAWING

ANTCOM CORP. TORRANCE CALIFORNIA

OUTLINE DRAWING:
15 ELEMENT L1/L2 GPS
RHCP-LHCP ANTENNA ARRAY

REV: 3C
DATE: 01-05-29
BY: S. HUYNH

SCALE: 1/1

SHEET 1 OF 1

Antenna Mounts: <http://www.antcom.com/documents/catalogs/PeripheralAntennaProducts2.pdf>
Amplifiers/Power Divider/Combiner/Filters: <http://www.antcom.com/documents/catalogs/PeripheralAntennaProducts1.pdf>