



# UHF + Iridium + L1L2 GPS Antenna

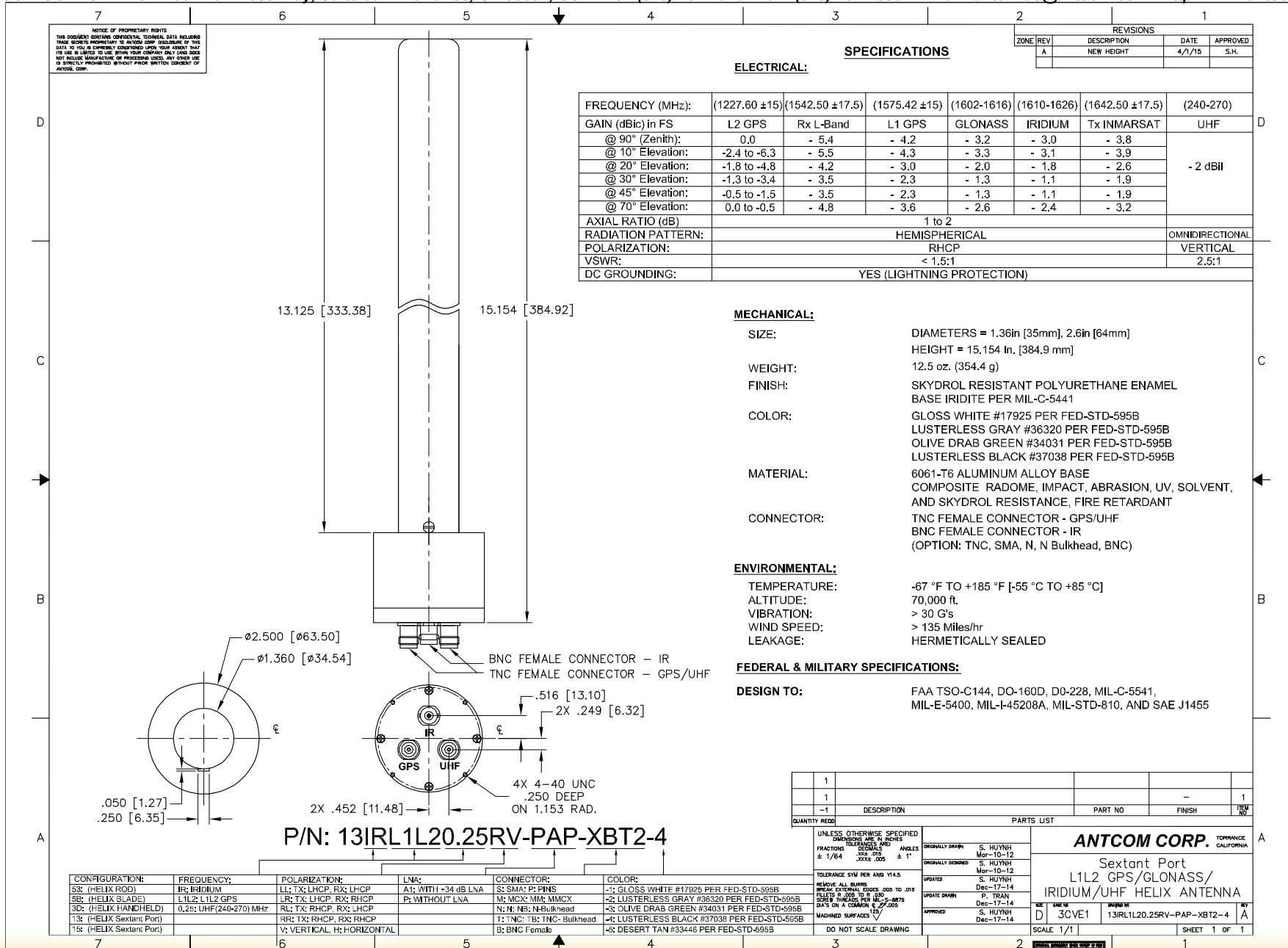
## P/N: 13IRL1L20.25RV-PAP-XBT2-4 Rev A

### C130/Sextant Port with 1 Lock-Pin Configuration



ISO 9001:2008/FAA Approved Facility Antenna Mounts/Adapters: <http://www.antcom.com/documents/catalogs/PeripheralAntennaProducts2.pdf>

ANTCOM CORPORATION . 367 Van Ness Way, Suite 602 . Torrance, CA 90501, USA . Tel: (310) 782-1076 . Fax: (310) 782-1086 . E-mail: [antennas@antcom.com](mailto:antennas@antcom.com) . <http://www.antcom.com>



NMO Connector Option is Now Available for Some Antennas