



Light Weight (250 - 500) MHz Spiral Antenna

P/N: 12X6S-0.25-0.50R-XN-4 (RHCP)

P/N: 12X6S-0.25-0.50L-XN-4 (LHCP)

For Cellular, PCS, 2G, 3G, 4G, LTE, CDMA, GSM, Wi-Fi & UMTS Applications

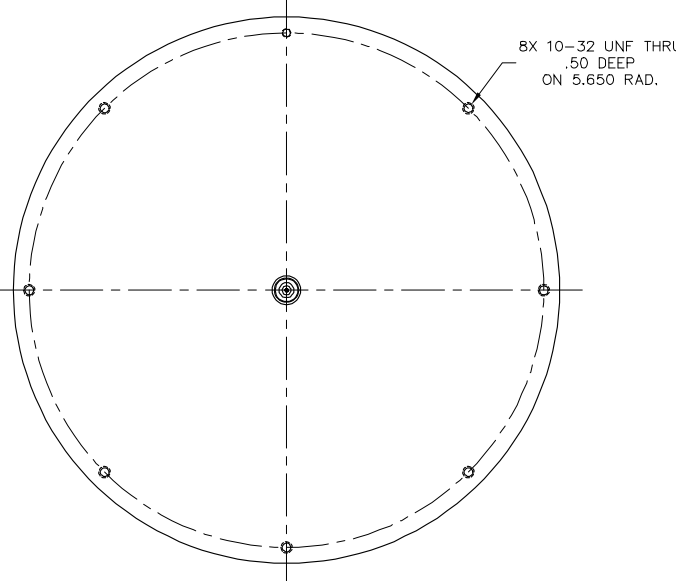
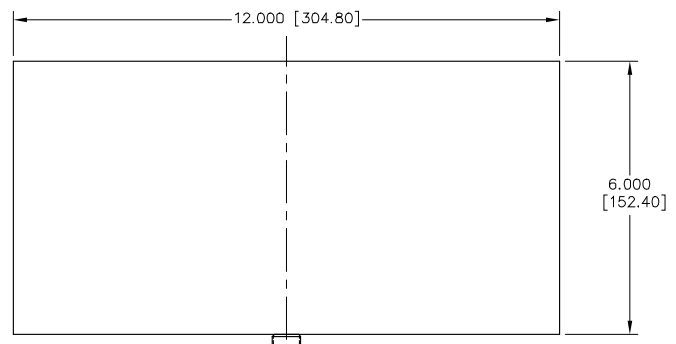
Other Frequencies, Polarization, Colors and Connectors are Available

ISO 9001:2008/FAA Approved Facility Antenna Mounts/Adapters: <http://www.antcom.com/documents/catalogs/PeripheralAntennaProducts2.pdf>



ANTCOM CORPORATION . 367 Van Ness Way, Suite 602 . Torrance, CA 90501, USA . Tel: (310) 782-1076 . Fax: (310) 782-1086 . E-mail: antennas@antcom.com . <http://www.antcom.com>

NOTICE OF PROPRIETARY RIGHTS
THIS DOCUMENT CONTAINS CONFIDENTIAL TECHNICAL DATA INCLUDING TRADE SECRETS PROPRIETARY TO ANTCOM CORP. DISCLOSURE OF THIS DATA TO YOU IS EXPRESSLY CONTINGENT UPON YOUR AGREEMENT THAT ITS USE IS LIMITED TO USE WITHIN YOUR COMPANY ONLY (AND DOES NOT INCLUDE MANUFACTURE OR PRODUCTION UNLESS ANY OTHER USE IS EXPRESSLY PROHIBITED WITHOUT PRIOR WRITTEN CONSENT OF ANTCOM CORP.)



SPECIFICATIONS

ZONE		REVISIONS		
REV	DESCRIPTION	DATE	APPROVED	

ELECTRICAL:

FREQUENCY:	(250-500) MHz
PATTERN:	DIRECTIONAL
POLARIZATION:	RHCP OR LHCP
ANTENNA GAIN:	0 dBic
BEAM WIDTH:	(80-100) Deg
VSWR:	2.0:1
AXIAL RATIO:	2 dB
OUTPUT IMPEDANCE:	50 ohms
POWER HANDLING:	100 watts

LNA OPTION (For Rx Only):

LNA GAIN:	33 dB (P1dBout = +13 dBm)
LNA NOISE FIGURE:	2.2 dB
LNA VOLTAGE:	(+2.5 to +24) Volts DC
LNA DRAWING CURRENT:	< 30 mA

MECHANICAL:

SIZE:	DIA: 12.000 in [304.80 mm] HEIGHT: 6.000 in [152.40 mm] 7oz. (198 g)
WEIGHT:	7oz. (198 g)
FINISH:	SKYDROL RESISTANT POLYURETHANE ENAMEL, AND CONDUCTIVE YELLOW CHEM FILM
MATERIAL:	6061-T6 ALUMINUM ALLOY BASE COMPOSITE RADOME, IMPACT, ABRASION, UV, SOLVENT, AND SKYDROL RESISTANCE, FIRE RETARDANT
CONNECTOR:	N FEMALE (OPTION: SMA, TNC, QMA, SMB)

ENVIRONMENTAL:

TEMPERATURE:	-76 °F TO +195 °F [-60 °C TO +90 °C]
ALTITUDE:	30,000 ft.
VIBRATION:	> 20 G's
LEAKAGE:	HERMETICALLY SEALED

FEDERAL & MILITARY SPECIFICATIONS:

DESIGN TO:	FAA TSO-C144, DO-160D, D0-228, MIL-C-5541, MIL-E-5400, MIL-I-45208A, MIL-STD-810, AND SAE J1455
------------	---

FREQUENCY BAND:	POLARIZATION:	LNA:	FEMALE CONNECTOR:	COLOR:
L1/L2: (1.575)(1.227) GHz	V: VERTICAL	A: ACTIVE	S: SMA	-1: GLOSS WHITE #17925 PER FED-STD-595B
T: Rx/Tx Thuraya	R: RHCP	P: PASSIVE	T: TNC	-2: LUSTERLESS GRAY #36320 PER FED-STD-595B
LN: Rx/Tx Inmarsat/Iridium	L: LHCP		N: N	-3: CAMO GREEN #34094 PER FED-STD-595B
0.25-0.50: (.25 - .50) GHz	RL: RHCP/LHCP			-4: LUSTERLESS BLACK #37038 PER FED-STD-595B
1.6-1.9: (1.6 - 1.9) GHz	LR: LHCP/RHCP			-5: TAN #33446 PER FED-STD-595B
2.2-2.3: (2.2 - 2.3) GHz				
2.2-2.5: (2.2 - 2.5) GHz				
LS: (1.625 - 1.85)(2.2 - 2.4) GHz				
X.X-Y.Y: (X.XX - Y.YY) GHz				

P/N: 12X6S-0.25-0.50R-XN-4

1	DESCRIPTION	PART NO	FINISH	1

UNLESS OTHERWISE SPECIFIED DIMENSIONS ARE IN INCHES	ANTCOM CORP. TORRANCE CALIFORNIA (0.25-0.50) GHz Spiral Antenna
FRACTIONS SHALL BE IN 16ths	
TOLERANCES ARE ± 1/64	
ANGLES ± 1°	
TOLERANCE SURF PER ANSI Y14.5	ORIGINAL DRAWN S. HUYNH Feb-07-16 ORIGINAL DESIGNED S. HUYNH Feb-07-16 UPDATED S. HUYNH May-11-17 UPDATE DRAWN S. HUYNH May-11-17 APPROVED S. HUYNH May-11-17
WEIGHTS ALL IN OUNCES	
BREAK EXTERNAL EDGES .005 TO .015	
FILETS R .005 TO R .030	
SCREW HEADS PER MIL-C-8879	DRC 3CVE1 SCALE 1/1 SHEET 1 OF 1
DIMS ON A COMMON & 2-DIMS	
MACHINED SURFACES 125	
DO NOT SCALE DRAWING	