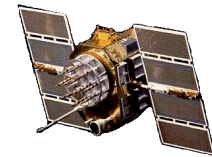




L1/L2 GPS Antennas, P/N: 1.9G1215X-18RS-X-2

2.0" Square, Flat Mount Configuration with 18in Right Angle SMA (Generic Drawing below)

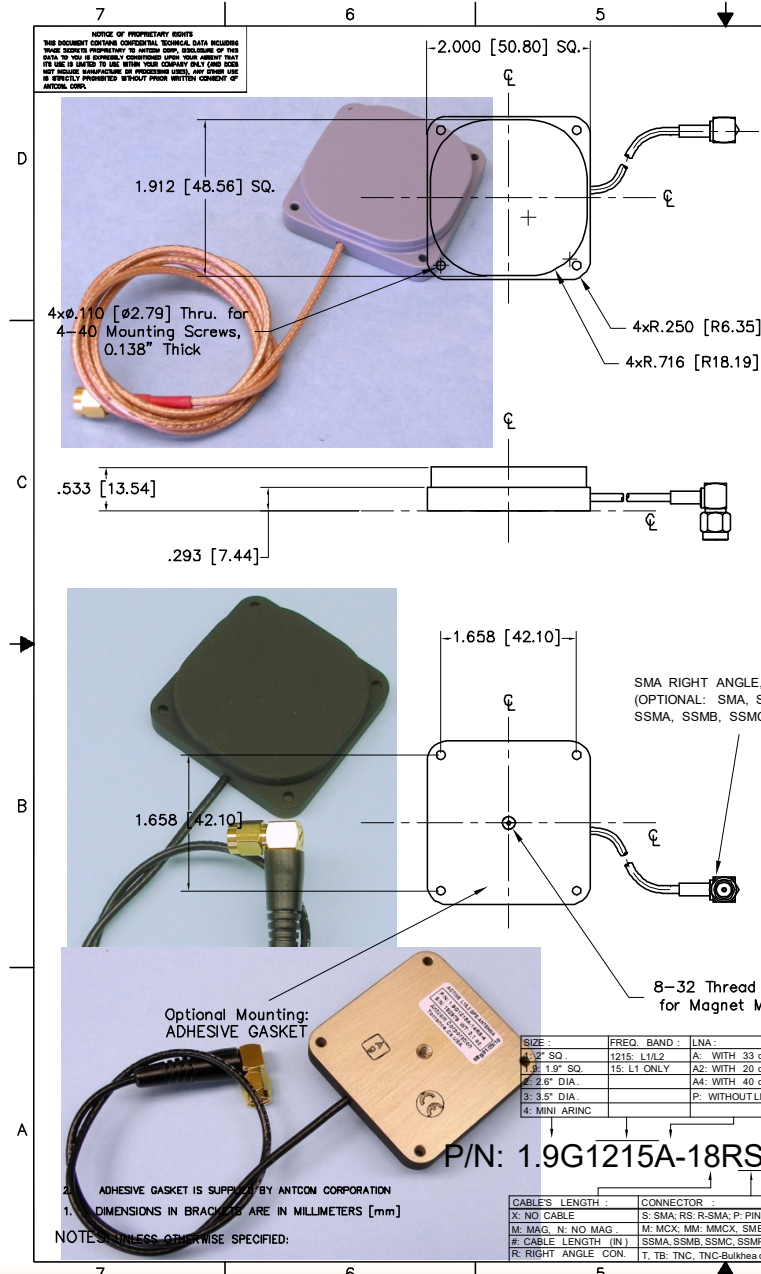
P/N: 1.9G1215P-36S-2-2 (P/N: ANT-19S2GP-36SGY)



ISO 9001:2008/FAA Approved Facility

Antenna Mounts: <http://www.antcom.com/documents/catalogs/PeripheralAntennaProducts2.pdf>

ANTCOM CORPORATION . 367 Van Ness Way, #602 . Torrance, CA 90501 . Tel: (310) 782-1076 . Fax: (310) 782-1086 . E-mail: [antennas@antcom.com](mailto:antennas@antcom.com) . <http://www.antcom.com>



**SPECIFICATIONS**

		REVISIONS					
		ZONE	REV	DESCRIPTION	DATE	APPROVED	
<b>ELECTRICAL:</b>							
FREQUENCY:		L1: (1575.42 ±12) MHz			L2: (1227.60 ±12) MHz		
RADIATION PATTERN:		HEMISPHERICAL					
POLARIZATION:		RHCP			RHCP		
VSWR:		< 1.5:1					
IMPEDANCE:		50 ohms			50 ohms		
ANTENNA GAIN (dBi):		Free Space	3 in G.P.	4 ft G.P.	Free Space	3 in G.P.	4 ft G.P.
@ 90° (ZENITH):		+3.7	+4.7	+3.1	-1.7	+3.3	+4.5
@ 10° Elevation:		-2.9	-1.8	-1.9	-7.3	-3.8	-3.5
@ 20° Elevation:		-1.3	-0.3	+0.6	-6.2	-2.0	-0.8
@ 30° Elevation:		0.0	+1.4	+1.7	-5.2	-0.5	+1.4
@ 60 - 90° Elevation:		> 3.0	> 3.9	> 2.4	> -3.2	> 2.7	> 2.2
BEAM WIDTH (3dB):		108 Deg.	114 Deg.	143 Deg.	100 Deg.	106 Deg.	74 Deg.
AXIAL RATIO:		2 dB			2 dB		
LIGHTNING PROTECTION:		DC GROUNDING					
LNA GAIN:		33 dB			35 dB		
LNA NOISE FIGURE:		3.0 dB			3.0 dB		
LNA P1dB Out:		+13 dBm			+13 dBm		
LNA DC POWER:		2.5V/20mA, 3V/29mA, 3.3V/35mA, (2.5-24)V/<50mA					
REJECTION @ (-50/+50) MHz		< -41 dB / -59 dB			< -40 dB / -40 dB		
@ (-100/+100) MHz		< -65 dB			< -65 dB		
POWER HANDLING:		1 Watt CW, Optional: 10 Watts 1 microsec Pulse (-AL-)					

**MECHANICAL:**

SIZE: LENGTH = 2.00 in. [ 50.80 mm], WIDTH = 2.00 in. [50.58 mm]  
 HEIGHT = 0.533in. [13.54mm]

WEIGHT: 2.88 oz. (82 g)

FINISH: SKYDROL RESISTANT POLYURETHANE ENAMEL  
 BASE IRIDITE PER MIL-C-544 1

MATERIAL: 6061-T6 ALUMINUM ALLOY BASE  
 COMPOSITE RADOME, IMPACT, ABRASION, UV, SOLVENT,  
 SKYDROL RESISTANCE, AND FIRE RETARDANT

CONNECTOR: SMA RIGHT ANGLE MALE WITH 18" CABLE  
 (OPTION: SMB, SMC, SSMA, SSMA, SSMC, SSMP  
 MCX, MMCX, TNC, OR N)

**ENVIRONMENTAL:**

TEMPERATURE: -67 °F TO +185 °F [-55 °C TO +85 °C]

ALTITUDE: 70,000 ft.

VIBRATION: > 30 G's

LEAKAGE: HERMETICALLY SEAL

**FEDERAL & MILITARY SPECIFICATIONS:**

DESIGN TO: FAA TSO-C144, DO-160D, D0-228, MIL-C-5541,  
 MIL-E-5400, MIL-I-45208A, MIL-STD-810, AND SAE J1455

ACCEPTANCE TEST PROCEDURE: ATP-GPS-L1L2-100

QUANTITY REQD	DESCRIPTION	PART NO	SPECIFICATION	MATERIAL	FINISH	REF
5						
1	ADHESIVE GASKET	12345G-3M-1G				3
1						2
1						1
-2						

SIZE	FREQ. BAND	LNA
1: 2" SQ.	1215: L1/L2	A: WITH 33 dB LNA
2: 1.9" SQ.	15: L1 ONLY	A2: WITH 20 dB LNA
3: 2.6" DIA.		AA: WITH 40 dB LNA
4: 3.5" DIA.		P: WITHOUT LNA
5: MINI ARINC		

P/N: 1.9G1215A-18RS-3-2

CABLE'S LENGTH :	CONNECTOR :	COLOR :
X: NO CABLE	S: SMA, RS: R-SMA; P: PINS	-1: GLOSS WHITE #17925 PER FED-STD-595B
M: MAG. W/ NO MAG	M: MCX, MM, MMCX, SMB	-2: LUSTERLESS GRAY #36320 PER FED-STD-595B
R: CABLE LENGTH (IN)	SSMA, SSMB, SSMC, SSMP	-3: OLIVE DRAB GREEN #34031 PER FED-STD-595B
T: RIGHT ANGLE CON.	T, TB, TNC, TNC-Bulkhead	-4: LUSTERLESS BLACK #37038 PER FED-STD-595B

UNLESS OTHERWISE SPECIFIED DIMENSIONS ARE IN INCHES  
 FRACTIONS ARE 16THS UNLESS NOTED OTHERWISE  
 ± 1/84 .000 .015 ± 1"

DRIVER: M. BOAS  
 CHECKED: 01-05-29  
 DESIGNER:  
 APPROVED: S. HUYNH  
 01-05-29

DO NOT SCALE DRAWING

**ANTCOM CORP.** TORRANCE CALIFORNIA

2" SQ. ACTIVE OR PASSIVE L1/L2 GPS ANTENNA WITH CABLE

D 3CVE1 | 1.9G1215X-18RS-X-2

SCALE 1/1 SHEET 1 OF 1

NMO Connector Option is Now Available for Some Antennas