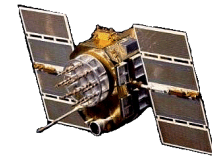




Active L1/L2 GPS Antennas

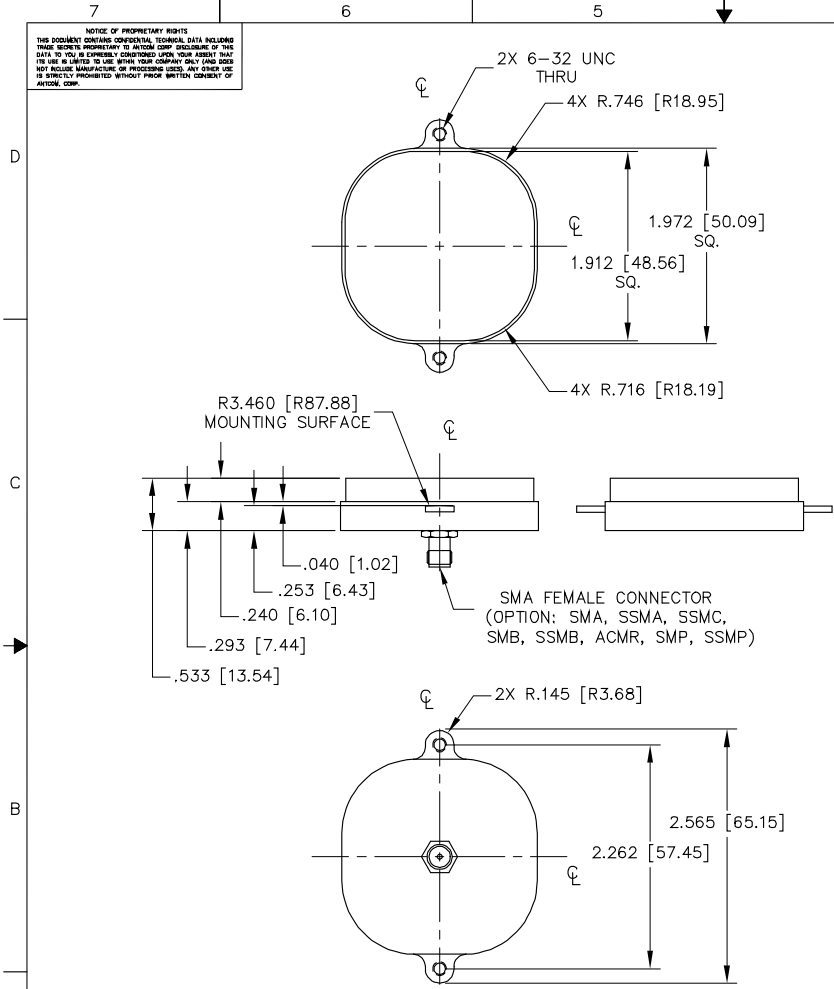
P/N: 1.9G1215AL3-XRS-2-LW2.5



Other Mounting Radius, Connector and Color Options Are Available

ISO 9001:2008/FAA Approved Facility Antenna Mounts: <http://www.antcom.com/documents/catalogs/PeripheralAntennaProducts2.pdf>

ANTCOM CORPORATION . 367 Van Ness Way, #602 . Torrance, CA 90501 . Tel: (310) 782-1076 . Fax: (310) 782-1086 . E-mail: antennas@antcom.com . <http://www.antcom.com>



SPECIFICATIONS

ZONE	REVISIONS					
	REV	DESCRIPTION	DATE	APPROVED		
ELECTRICAL:						
FREQUENCY:	L1: (1575.42 ±12) MHz		L2: (1227.60 ±12) MHz			
RADIATION PATTERN:	HEMISPHERICAL					
POLARIZATION:	RHCP		RHCP			
VSWR:	< 1.5:1		< 1.5:1			
IMPEDANCE:	50 ohms		50 ohms			
ANTENNA GAIN (dBi):	Free Space	3 in G.P.	4 ft G.P.	Free Space	3 in G.P.	4 ft G.P.
@ 90° (ZENITH):	+3.7	+4.7	+3.1	-1.7	+3.3	+4.5
@ 10° Elevation:	-2.9	-1.8	-1.9	-7.3	-3.8	-3.5
@ 20° Elevation:	-1.3	-0.3	+0.6	-6.2	-2.0	-0.8
@ 30° Elevation:	0.0	+1.4	+1.7	-5.2	-0.5	+1.4
@ 60-90° Elevation:	> 3.0	> 3.9	> 2.4	> -3.2	> 2.7	> 2.2
BEAM WIDTH (3dB):	108 Deg.	114 Deg.	143 Deg.	100 Deg.	106 Deg.	74 Deg.
AXIAL RATIO:	2 dB		2 dB			
LIGHTNING PROTECTION:	DC GROUNDING					
LNA GAIN:	33 dB (Option A), 20 dB (Option A2)					
LNA NOISE FIGURE:	3.0 dB (Option A), 2 dB (Option A2)					
LNA P1dB Out:	+13 dBm					
LNA DC POWER:	2.5V/20mA, 3V/29mA, 3.3V/35mA, (2.5-24)V/<50mA					
REJECTION @ (-50/+50) MHz	-41 dB / -59 dB		-40 dB / -40 dB			
@ (-100/+100) MHz	< -65 dB		< -65 dB			
POWER HANDLING:	1 Watt CW, Optional: 10 Watts 1 microsec Pulse (-AL-)					

MECHANICAL:	
SIZE:	LENGTH = 1.972 in.[50.09 mm] SQ. HEIGHT= 0.533 in. [13.54 mm]
WEIGHT:	2.0 oz. (57 g)
FINISH:	SKYDROL RESISTANT POLYURETHANE ENAMEL BASE IRIDITE PER MIL-C-5441F
MATERIAL:	6061-T6 ALUMINUM ALLOY BASE COMPOSITE RADOME, IMPACT, ABRASION, UV, SOLVENT, SKYDROL RESISTANCE, AND FIRE RETARDANT
CONNECTOR:	SMA FEMALE (OPTION: SMA, SSMA, SSMC, SMB, SSMB, SMP, SSMP)

ENVIRONMENTAL:	
TEMPERATURE:	-67 °F TO +185 °F [-55 °C TO +85 °C]
ALTITUDE:	70,000 ft.
VIBRATION:	> 30 G's
LEAKAGE:	HERMETICALLY SEAL

FEDERAL & MILITARY SPECIFICATIONS:	
DESIGN TO:	FAA TSO-C144, DO-160D, D0-228, MIL-C-5541, MIL-E-5400, MIL-I-45208A, MIL-STD-810, AND SAE J1455
ACCEPTANCE TEST PROCEDURE:	ATP-GPS-L1L2-100

SIZE:	FREQ. BAND:	LNAs:
1: 2" SQ.	1215 L1/L2	A3: WITH 33 dB Gain LNA
1.5: 1.8" SQ.	15: L1 ONLY	AL3: WITH 33 dB Gain LNA WITH LIMITER
2: 2.6" DIA.		A2: WITH 20 dB Gain LNA WITHOUT REJECTION FILTERS
3: 3.5" DIA.		A4: WITH 40 dB Gain LNA WITHOUT REJECTION FILTERS
4: MINI ARINC		P: WITHOUT LNA

CABLE LENGTH:	CONNECTOR:	COLOR:
X: NO CABLE	UMCX: UMCX	-1: GLOSS WHITE #17925 PER FED-STD-595B
#: CABLE LENGTH (IN)	S: SMA; SMC; SMC; P: PINS	-2: LUSTERLESS GRAY #36320 PER FED-STD-595B
M: RIGHT ANGLE CON.	M: MCR; MMR; MMMC	-3: CAMO GREEN #34094 PER FED-STD-595B
	T, TB: TNC, N,N	-4: LUSTERLESS BLACK #37038 PER FED-STD-595B
		-5: DESERT TAN #33446 PER FED-STD-595B

QUANTITY	RECD	DESCRIPTION	PART NO	SPECIFICATION	MATERIAL	FINISH	ITEM NO
1							3
1							2
1							1
-2	-1						

UNLESS OTHERWISE SPECIFIED DIMENSIONS ARE IN INCHES FRACTIONS DECIMALS ANGLES	ORIGINALLY DESIGNED	DATE
± 1/64 .002 .005 ± 1°	S. HUYNH	Mar-13-13
	S. HUYNH	Mar-13-13
	S. HUYNH	Apr-26-17
	P. TRAN	Apr-26-17
	S. HUYNH	Apr-26-17
	S. HUYNH	Apr-26-17

ANTCOM CORP.	TORRANCE, CALIFORNIA
ACTIVE L1/L2 GPS ANTENNA	
D13CVE1	1.9G1215AL3-XRS-2-LW2.5
SCALE 1/1	SHEET 1 OF 1

2. ADHESIVE GASKET IS SUPPLIED BY ANTCOM CORPORATION
 1. DIMENSIONS IN BRACKETS ARE IN MILLIMETERS [mm]
 NOTES: UNLESS OTHERWISE SPECIFIED:

NMO Connector Option is Now Available for Some Antennas