



FAA Approved Facility

S-Band RHCP or LHCP Antennas, P/N: 1.5G25XX-X-XX-X

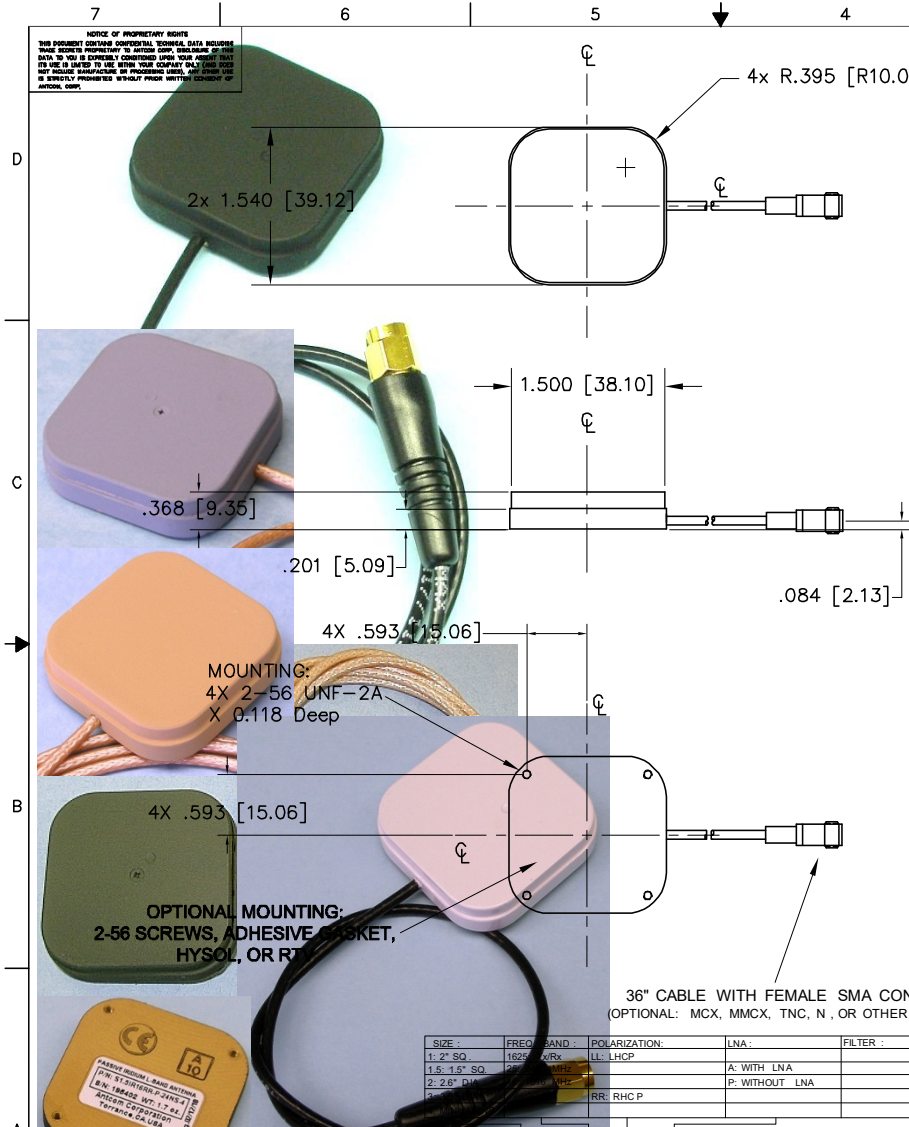
1.5" Square, Back Mount Configurations with Cable



Antenna Mounts/Adapters: <http://www.antcom.com/documents/catalogs/PeripheralAntennaProducts2.pdf>

ANTCOM CORPORATION . 367 Van Ness Way, Suite 602 . Torrance, CA 90501 . Tel: (310) 782-1076 . Fax: (310) 782-1086 . E-mail: antennas@antcom.com . <http://www.antcom.com>

NOTICE OF PROPRIETARY RIGHTS
THIS PRODUCT CONTAINS CONFIDENTIAL, TRADE SECRET, AND/OR PROPRIETARY INFORMATION. ANY DISCLOSURE OF THIS INFORMATION TO ANY OTHER PARTY WITHOUT THE WRITTEN CONSENT OF ANTCOM CORPORATION IS STRICTLY PROHIBITED. ANY UNAUTHORIZED USE OF THIS INFORMATION IS STRICTLY PROHIBITED. ANY UNAUTHORIZED REPRODUCTION OR TRANSMISSION OF THIS INFORMATION IS STRICTLY PROHIBITED. ANY UNAUTHORIZED REPRODUCTION OR TRANSMISSION OF THIS INFORMATION IS STRICTLY PROHIBITED. ANY UNAUTHORIZED REPRODUCTION OR TRANSMISSION OF THIS INFORMATION IS STRICTLY PROHIBITED.



SPECIFICATIONS

ELECTRICAL:

FREQUENCY:	(2484 - 2499) MHz	
RADIATION PATTERN:	HEMISPHERICAL	
POLARIZATION:	RHCP OR LHCP (See P/N Below)	
VSWR:	< 1.5:1	
GAIN (dB):	4 ft G.P.	3.5 in G.P.
@ 90° (Zenith):	+4.6	+5.7
@ 10° Elevation (Ave):	-1.1	-2.4
@ 20° Elevation (Ave):	+2.2	-0.1
@ 30° Elevation (Ave):	+2.2	+1.6
@ 45° Elevation (Ave):	+3.4	+3.0
@ 70° Elevation (Ave):	+4.4	+5.0
BEAM WIDTH (3dB):	129 °	98 °
AXIAL RATIO @ Zenith:	2.0 dB	
IMPEDANCE:	50 Ohms	
POWER HANDLING:	200 Watt	
DC GROUNDING:	YES (LIGHTNING PROTECTION)	

LNA OPTION :

LNA GAIN :	N/A	(35 +/- 1) dB
LNA NOISE FIGURE :	N/A	2.8 dB
LNA VOLTAGE :	N/A	(+2.5 to +30) Volts DC FROM Rx RF CON .
LNA DRAWING CURRENT :	N/A	< 38 mA
FILTER (REJ. @1616 MHz):	57 dB	

MECHANICAL:

SIZE: LENGTH=1.54 in.[39.12 mm], WIDTH=1.54 in. [39.12 mm]
HEIGHT= 0.368 in. [9.35 mm]
WEIGHT: 1.1 oz. (31.2 g)
FINISH: SKYDROL RESISTANT POLYURETHANE ENAMEL
 BASE IRIDITE PER MIL-C-5441
MATERIAL: 6061-T6 ALUMINUM ALLOY BASE
 COMPOSITE RADOME, IMPACT, ABRASION, UV, SOLVENT,
 AND SKYDROL RESISTANCE, FIRE RETARDANT
CONNECTOR : FEMALE SMA CONNECTOR WITH 36" CABLE
 (OPTIONAL: MCX, MMCX, TNC, N, OR OTHER CONNECTOR)
ENVIRONMENTAL:
TEMPERATURE: -67 °F TO +185 °F [-55 °C TO +85 °C]
ALTITUDE: 70,000 ft.
VIBRATION: > 30 G's
LEAKAGE : HERMETICALLY SEAL

FEDERAL & MILITARY SPECIFICATIONS:

DESIGN TO: FAA TSO-C144, DO-160D, DO-228, MIL-C-5541,
 MIL-E-5400, MIL-I-45208A, MIL-STD-810, AND SAE J1455

SIZE :	FREQ. BAND :	POLARIZATION :	LNA :	FILTER :
1: 2" SQ	1625-1710 MHz	LL: LHCP	A: WITH LNA	
1.5" - 1.5" SQ	1625-1710 MHz	RR: RHCP	P: WITHOUT LNA	
2: 2.8" DIA				

QUANTITY REQD	DESCRIPTION	PART NO	SPECIFICATION	MATERIAL	FINISH	REF ID
-	ADHESIVE GASKET	12345G-3M-1.2G	-	-	-	3
-2						1

P/N: 1.5G25XX-X-36S-X

CABLES LENGTH :	CONNECTOR :	COLOR :
X: NO CABLE	S: SMA; P: PINS	-1: GLOSS WHITE #17925 PER FED-STD-595B
M: WITH M403 MOUNT	M: MCX; MM: MMCX	-2: LUSTERLESS GRAY #36320 PER FED-STD-595B
P: CABLE LENGTH (IN) :	N: N (Optional Bulkhead)	-3: OLIVE DRAB GREEN #34031 PER FED-STD-595B
R: RIGHT ANGLE CON	T: TNC (Optional Bulkhead)	-4: LUSTERLESS BLACK #37038 PER FED-STD-595B

UNLESS OTHERWISE SPECIFIED DIMENSIONS ARE IN INCHES FRACTIONS TO DECIMALS AND ANGLES TO NEAREST 10' ± 1/64 DECIMAL TO ± 1' TOLERANCE 5/16 PER ANSI Y14.5 REVISE ALL DIMENSIONS TO .015 BREAK EXTERNAL EDGES TO .015 FILE ALL DIMENSIONS TO .005 DOTS ON A CORNER & 2X .005 MACHINED SURFACES DO NOT SCALE DRAWING

ANTCOM CORP. TORRANCE CALIFORNIA
 1.5" SQ. FLAT MOUNT S-Band CP Antenna (With 36" Cable)

APPROVED: S. HUYNH Aug-27-03
 Dwg File No: 3CVE1
 SCALE 1/1
 SHEET 1 OF 1

2. MOUNTING SCREWS ARE SUPPLIED BY ANTCOM CORPORATION
 1. DIMENSIONS IN BRACKETS ARE IN MILLIMETERS [mm]
 NOTES: UNLESS OTHERWISE SPECIFIED:

NMO Connector is Now Available for Some Antennas