



FAA Approved Facility

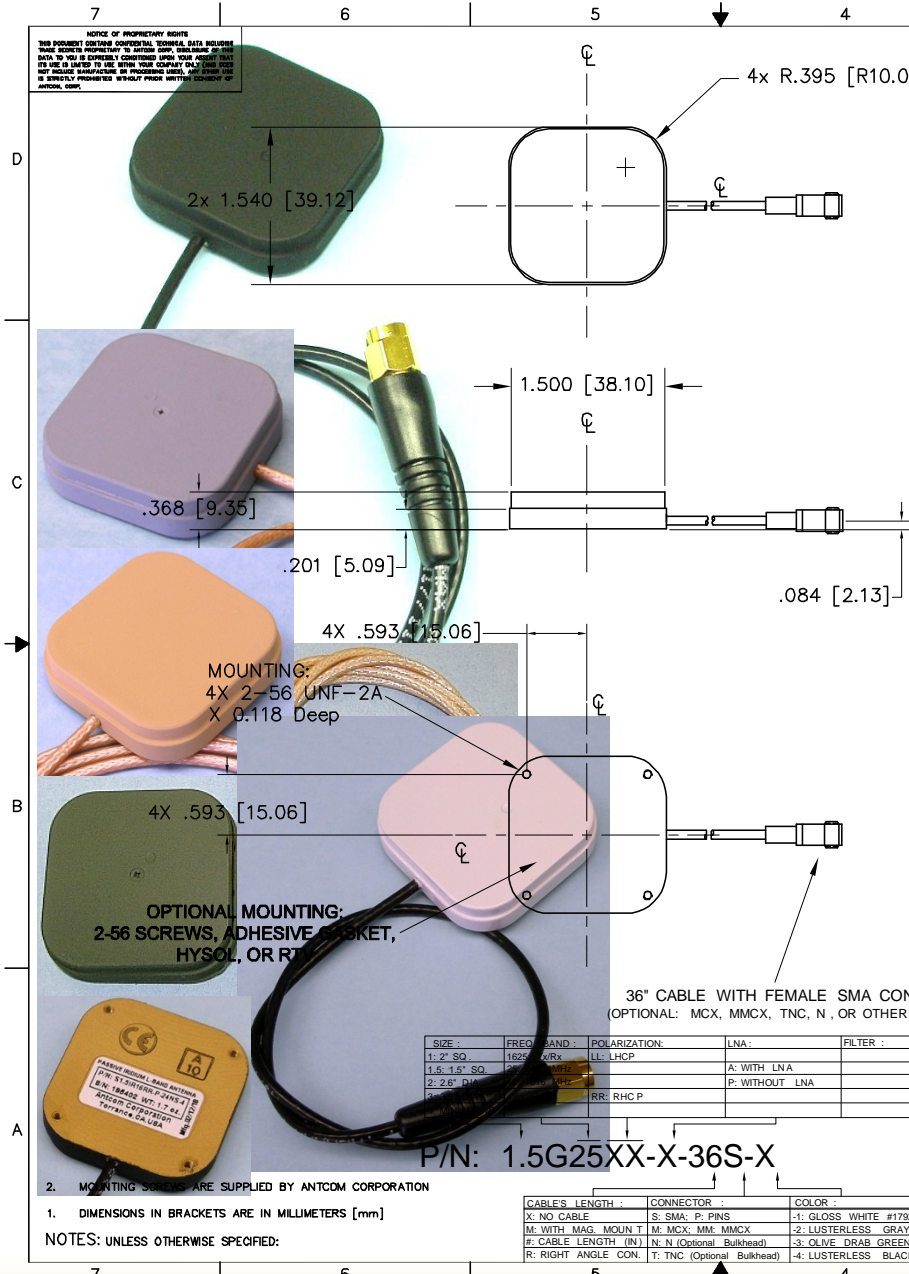
S-Band RHCP or LHCP Antennas, P/N: 1.5G25XX-X-XX-X

1.5" Square, Back Mount Configurations with Cable



Antenna Mounts/Adapters: <http://www.antcom.com/documents/catalogs/PeripheralAntennaProducts2.pdf>

ANTCOM CORPORATION . 367 Van Ness Way, Suite 602 . Torrance, CA 90501 . Tel: (310) 782-1076 . Fax: (310) 782-1086 . E-mail: antennas@antcom.com . <http://www.antcom.com>



REVISIONS		DATE	APPROVED
ZONE	REV	DESCRIPTION	

SPECIFICATIONS

ELECTRICAL:

FREQUENCY:	(2484 - 2499) MHz
RADIATION PATTERN:	HEMISPHERICAL
POLARIZATION:	RHCP OR LHCP (See P/N Below)
VSWR:	< 1.5:1
GAIN (dB):	4 ft G.P. 3.5 in G.P.
@ 90° (Zenith):	+4.6 +5.7
@ 10° Elevation (Ave):	-1.1 -2.4
@ 20° Elevation (Ave):	+2.2 -0.1
@ 30° Elevation (Ave):	+2.2 +1.6
@ 45° Elevation (Ave):	+3.4 +3.0
@ 70° Elevation (Ave):	+4.4 +5.0
BEAM WIDTH (3dB):	129° 98°
AXIAL RATIO @ Zenith:	2.0 dB
IMPEDANCE:	50 Ohms
POWER HANDLING:	200 Watt
DC GROUNDING:	YES (LIGHTNING PROTECTION)

LNA OPTION :

LNA GAIN :	N/A	(35 +/- 1) dB
LNA NOISE FIGURE :	N/A	2.8 dB
LNA VOLTAGE :	N/A	(+2.5 to +30) Volts DC FROM Rx RF CON .
LNA DRAWING CURRENT :	N/A	< 38 mA
FILTER (REJ. @1616 MHz):	57 dB	

MECHANICAL:

SIZE: LENGTH=1.54 in.[39.12 mm], WIDTH=1.54 in. [39.12 mm]
 HEIGHT= 0.368 in. [9.35 mm]

WEIGHT: 1.1 oz. (31.2 g)

FINISH: SKYDROL RESISTANT POLYURETHANE ENAMEL
 BASE IRIDIUM PER MIL-C-5441

MATERIAL: 6061-T6 ALUMINUM ALLOY BASE
 COMPOSITE RADOME, IMPACT, ABRASION, UV, SOLVENT,
 AND SKYDROL RESISTANCE, FIRE RETARDANT

CONNECTOR: FEMALE SMA CONNECTOR WITH 36" CABLE
 (OPTIONAL: MCX, MMCX, TNC, N, OR OTHER CONNECTOR)

ENVIRONMENTAL:

TEMPERATURE: -67 °F TO +185 °F [-55 °C TO +85 °C]

ALTITUDE: 70,000 ft.

VIBRATION: > 30 G's

LEAKAGE: HERMETICALLY SEAL

FEDERAL & MILITARY SPECIFICATIONS:

DESIGN TO: FAA TSO-C144, DO-160D, DO-228, MIL-C-5541,
 MIL-E-5400, MIL-I-45208A, MIL-STD-810, AND SAE J1455

QUANTITY REQD	DESCRIPTION	PART NO	SPECIFICATION	MATERIAL	FINISH	REF NO
-	ADHESIVE GASKET	12345G-3M-1.2G	-	-	-	3
-2	-	-	-	-	-	1

UNLESS OTHERWISE SPECIFIED DIMENSIONS ARE IN INCHES FRACTIONS TO DECIMALS ANGLES TO 1/64 DECIMALS TO ± 1° TOLERANCE SHG PER ASH 174.5 REVISE ALL DIMENSIONS TO .015 PER FED-STD-595B DATE ON A CONFORM TO 2/2008 MACHINED SURFACES		<p>ANTCOM CORP. TORRANCE CALIFORNIA</p> <p>1.5" SQ. FLAT MOUNT S-Band CP Antenna (With 36" Cable)</p> <p>DESIGNED BY: S. HUYNH APPROVED: Aug-27-03</p>	
SCALE 1/1	SHEET 1 OF 1	<p>DO NOT SCALE DRAWING</p>	

2. MOUNTING SCREWS ARE SUPPLIED BY ANTCOM CORPORATION

1. DIMENSIONS IN BRACKETS ARE IN MILLIMETERS [mm]

NOTES: UNLESS OTHERWISE SPECIFIED:

SIZE :	FREQ. BAND :	POLARIZATION :	LNA :	FILTER :
1: 2" SQ	1625-1700 MHz Rx	LL-LHCP	A: WITH LNA	
1.5"-1.5" SQ	1625-1700 MHz Rx	LL-LHCP	P: WITHOUT LNA	
2: 2.8" DIA	1625-1700 MHz Rx	RR: RHCP		

CABLES LENGTH :	CONNECTOR :	COLOR :
X: NO CABLE	S: SMA; P: PINS	-1: GLOSS WHITE #17925 PER FED-STD-595B
M: WITH MAG. MOUNT	M: MCX; MM: MMCX	-2: LUSTERLESS GRAY #36320 PER FED-STD-595B
P: CABLE LENGTH (IN) :	N: N (Optional Bulkhead)	-3: OLIVE DRAB GREEN #14031 PER FED-STD-595B
R: RIGHT ANGLE CON.	T: TNC (Optional Bulkhead)	-4: LUSTERLESS BLACK #37038 PER FED-STD-595B