



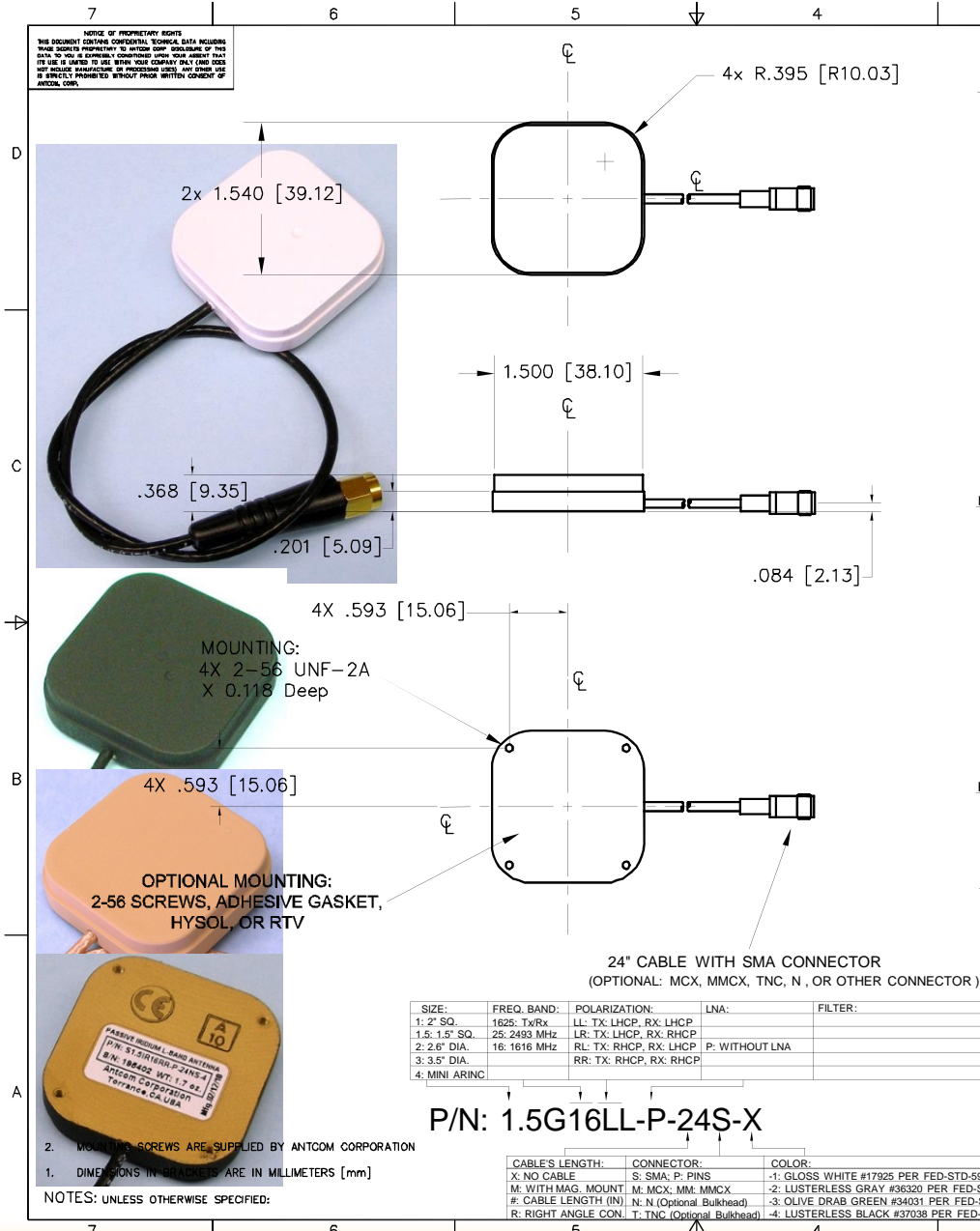
FAA Approved Facility

# L-Band LHCP & Tx Globalstar Antennas, P/N: 1.5G16LL-P-XX-X

## 1.5" Square, Back Mount Configurations with Cable



ANTCOM CORPORATION . 367 Van Ness Way, Suite 602 . Torrance, CA 90501 . Tel: (310) 782-1076 . Fax: (310) 782-1086 . E-mail: antennas@antcom.com . http://www.antcom.com



**REVISIONS**

ZONE	REV	DESCRIPTION	DATE	APPROVED

**SPECIFICATIONS**

**ELECTRICAL:**

FREQUENCY:	(1610.0 - 1626.5) MHz	SEE PART NO. BELOW
RADIATION PATTERN:	HEMISPHERICAL	
POLARIZATION:	LHCP	
VSWR:	< 1.5:1	
GAIN (dB):	4 ft G.P. 2.6 in G.P.	
@ 90° (Zenith):	+4.6 +5.1	
@ 10° Elevation (Ave):	-1.1 -2.1	
@ 20° Elevation (Ave):	+1.9 -0.3	
@ 30° Elevation (Ave):	+2.6 +1.1	
@ 45° Elevation (Ave):	+3.0 +2.6	
@ 70° Elevation (Ave):	+4.0 +4.6	
BEAM WIDTH (3dB):	139° 99°	
AXIAL RATIO @ Zenith:	2.0 dB	
IMPEDANCE:	50 Ohms	
POWER HANDLING:	200 Watt	
DC GROUNDING:	YES (LIGHTNING PROTECTION)	

**MECHANICAL:**

SIZE: LENGTH=1.54 in.[ 39.12 mm], WIDTH=1.54 in. [39.12 mm]  
 HEIGHT= 0.368 in. [9.35 mm]

WEIGHT: 1.1 oz. (31.2 g)

FINISH: SKYDROL RESISTANT POLYURETHANE ENAMEL  
 BASE IRIDITE PER MIL-C-5441

COLOR: GLOSS WHITE #17925 PER FED-STD-595B  
 LUSTERLESS GRAY #36320 PER FED-STD-595B  
 OLIVE DRAB GREEN #34031 PER FED-STD-595B  
 LUSTERLESS BLACK #37038 PER FED-STD-595B

MATERIAL: 6061-T6 ALUMINUM ALLOY BASE  
 COMPOSITE RADOME, IMPACT, ABRASION, UV, SOLVENT,  
 AND SKYDROL RESISTANCE, FIRE RETARDANT

CONNECTOR: SMA CONNECTOR WITH 24" CABLE  
 (OPTIONAL: MCX, MMCX, TNC, N, OR OTHER CONNECTOR)

**ENVIRONMENTAL:**

TEMPERATURE: -67 °F TO +185 °F [-55 °C TO +85 °C]  
 ALTITUDE: 70,000 ft.  
 VIBRATION: > 30 G's  
 LEAKAGE: HERMETICALLY SEAL

**FEDERAL & MILITARY SPECIFICATIONS:**

**DESIGN TO:** FAA TSO-C144, DO-160D, DO-228, MIL-C-5541,  
 MIL-E-5400, MIL-I-45208A, MIL-STD-810, AND SAE J1455

QTY	DESCRIPTION	PART NO	SPECIFICATION	MATERIAL	FINISH	REF
-	-	-	-	-	-	5
-	ADHESIVE GASKET	123456-3M-1.2G	-	-	-	3
-	-	-	-	-	-	1

**UNLESS OTHERWISE SPECIFIED DIMENSIONS ARE IN INCHES**

FRACTIONS TO BE SHOWN AS ANGLES  
 ± 1/64 .0005 ± 1'

TOLERANCE 5/64 PER ANSI Y14.5  
 BREAK LATERAL EDGES 90° TO .015  
 FILTER IS Q16 TO 8.000  
 DATE ON DRAWING 6/27/09  
 MACHINED SURFACES

DO NOT SCALE DRAWING

**ANTCOM CORP.** TORRANCE CALIFORNIA

1.5" SQ. FLAT MOUNT TX GLOBALSTAR ANTENNA (With 24" CABLE)

APPROVED: S. HUYNH Aug-27-03

DATE FILED: D 3CVE1

SCALE 1/1

SHEET 1 OF 1

Antenna Mounts/Adapters: http://www.antcom.com/documents/catalogs/PeripheralAntennaProducts2.pdf NMO Connector Option is Now Available for Some Antennas