



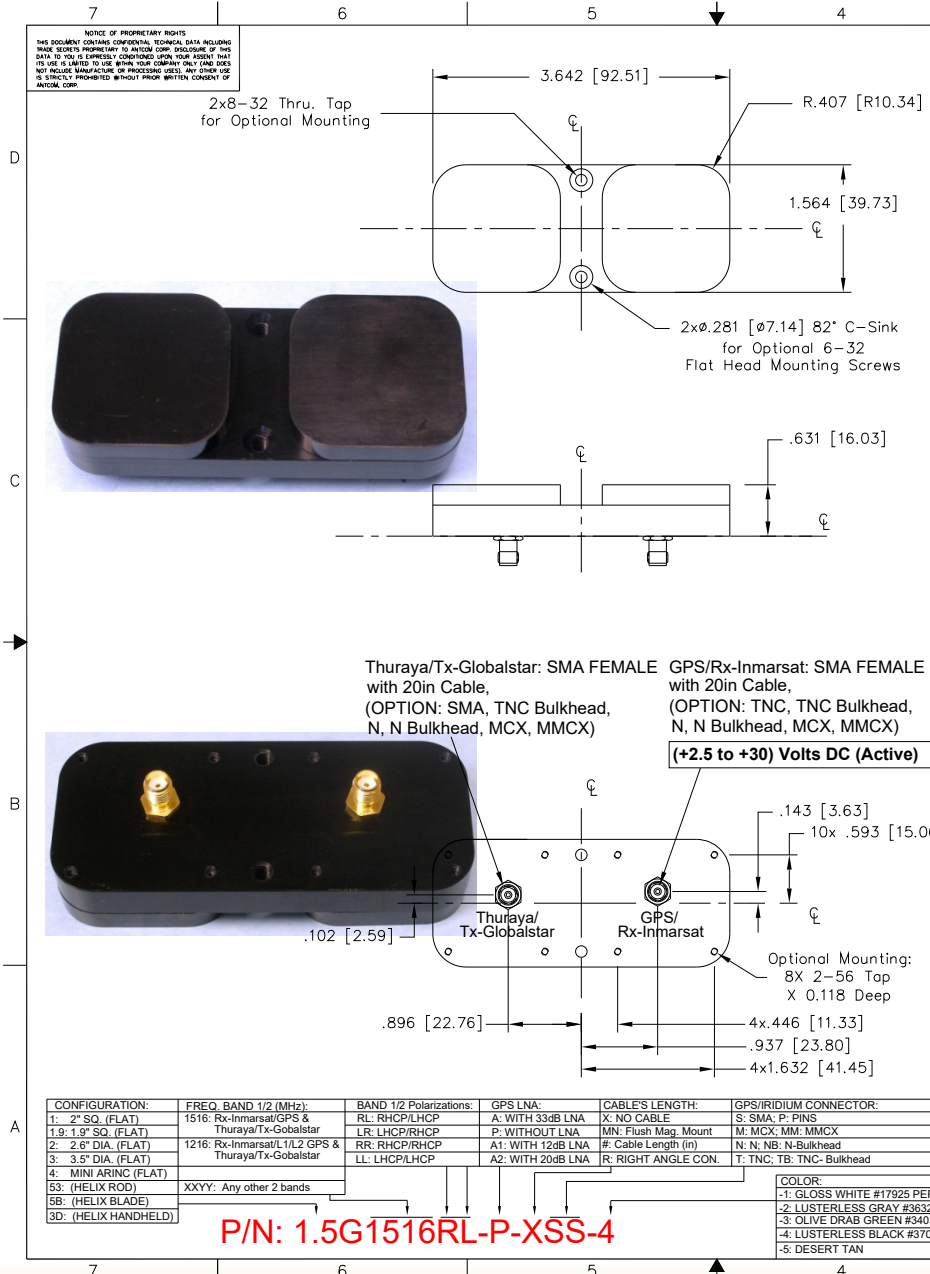
FAA Approved Facility

RHCP RX-Inmarsat/GPS & LHCP Thuraya/TX-Globalstar Antenna: P/N: 1.5G1516RL-P-XSS-4 (3.6" x 1.5" x 0.6"), Front Mount (Other Configurations are Available)

Antenna Mounts/Adapters: <http://www.antcom.com/documents/catalogs/PeripheralAntennaProducts2.pdf>



ANTCOM CORPORATION . 367 Van Ness Way, Suite 602 . Torrance, CA 90501 . Tel: (310) 782-1076 . Fax: (310) 782-1086 . E-mail: antennas@antcom.com . <http://www.antcom.com>



SPECIFICATIONS

ELECTRICAL:

	Thuraya & Tx-Globalstar (1610.0 - 1626.5) MHz	Rx-Inmarsat/GPS (1525 - 1580) MHz
FREQUENCY:		
RADIATION PATTERN:	HEMISPHERICAL	HEMISPHERICAL
POLARIZATION:	LHCP	RHCP
VSWR:	< 1.5:1	< 1.5:1
GAIN (dB):	4 ft G.P. Free Space	F.S. 4 ft G.P.
@ 90° (Zenith):	+4.9 +5.0	+ 4.6 + 2.9
@ 10° Elevation:	-1.0 -2.5	- 2.5 - 1.8
@ 20° Elevation:	+1.5 -0.5	- 1.1 + 0.7
@ 30° Elevation:	+2.4 +1.0	+ 0.5 + 1.7
@ 60° to 90° Elevation:	>+3.3 >+2.7	> 3.6 > 2.1
BEAM WIDTH (3dB):	129 ° 98 °-106 °	103 ° 146 °
AXIAL RATIO @ Zenith:	2 dB	2 dB
POWER HANDLING:	30 W	1 Watt
LIGHTNING PROTECTION:	DC GROUNDING	DC GROUNDING
LNA OPTION:		
LNA GAIN:	N/A	(33.0+/-1.0) dB, 20dB (-A2- Option)
LNA P 1dB Out:	N/A	+16 dBm
LNA NOISE FIGURE:	N/A	2.8 dB (Filter loss is Included)
VOLTAGE/CURRENT:	N/A	(+2.8 TO +28) Volts DC / (30 TO 50) mA

MECHANICAL:

SIZE: WIDTH: 1.56 in. [39.7 mm], LENGTH: 3.64 in [92.5 mm], HEIGHT: 0.63 in. [16.0 mm]

WEIGHT: 3.5 oz. (99 g)

FINISH: SKYDROL RESISTANT POLYURETHANE ENAMEL, AND NICKEL PLATING

MATERIAL: 6061-T6 ALUMINUM ALLOY BASE COMPOSITE RADOME, IMPACT, ABRASION, UV, SOLVENT, AND SKYDROL RESISTANCE, FIRE RETARDANT

CONNECTOR: Thuraya/Tx-Globalstar: SMA FEMALE (J1, Red); GPS/Rx-Inmarsat: SMA FEMALE (J2, Blue). Available in Other Con. Types

MOUNTING: FLAT FRONT (2 x 6-32 SCREWS), BACK (4 x 2-56 SCREWS), or FLUSH MAGNET

ENVIRONMENTAL:

TEMPERATURE: -67 °F TO +185 °F [-55 °C TO +85 °C]

ALTITUDE: 70,000 ft.

VIBRATION: > 30 G's

LEAKAGE: HERMETICALLY SEALED

FEDERAL & MILITARY SPECIFICATIONS:

DESIGN TO: FAA TSO-C144, DO-160D, D0-228, MIL-C-5541, MIL-E-5400, MIL-I-45208A, MIL-STD-810, AND SAE J1455

CONFIGURATION:	FREQ. BAND 1/2 (MHz):	BAND 1/2 Polarizations:	GPS LNA:	CABLE'S LENGTH:	GPS/IRIDIUM CONNECTOR:
1: 2" SQ. (FLAT)	1516: Rx-Inmarsat/GPS & Thuraya/Tx-Globalstar	RL: RHCP/LHCP	A: WITH 33dB LNA	X: NO CABLE	S: SMA, P: PINS
1.9: 1.9" SQ. (FLAT)		LR: LHCP/RHCP	P: WITHOUT LNA	MIN: Flush Mag. Mount	M: MCX, MM, MMCX
2: 2.6" DIA. (FLAT)	1216: Rx-Inmarsat/L1/L2 GPS & Thuraya/Tx-Globalstar	RR: RHCP/RHCP	A1: WITH 12dB LNA	#: Cable Length (in)	N: N, NB: N-Bulkhead
3: 3.5" DIA. (FLAT)		LL: LHCP/LHCP	A2: WITH 20dB LNA	R: RIGHT ANGLE CON.	T: TNC, TB: TNC-Bulkhead
4: MINI ARINC (FLAT)					
53: (HELIX ROD)	XXYY: Any other 2 bands				
5B: (HELIX BLADE)					
3D: (HELIX HANDHELD)					

P/N: 1.5G1516RL-P-XSS-4

QUANTITY REQD	DESCRIPTION	PART NO	MATERIAL	FINISH	ITEM NO
4					5
1					3
1					1

UNLESS OTHERWISE SPECIFIED DIMENSIONS ARE IN INCHES	ORIGINAL DRAWN	S. HUYNH	June-27-07
FRACTIONS: TOLERANCES ARE ANGLES: ± 1/64 .XXX.010 ± 1°	ORIGINAL DESIGNED <td>S. HUYNH <td>June-27-07 </td></td>	S. HUYNH <td>June-27-07 </td>	June-27-07
TOLERANCE SW PER ANSI Y14.5	UPDATED <td>S. HUYNH <td>Jan-06-14 </td></td>	S. HUYNH <td>Jan-06-14 </td>	Jan-06-14
REMOVE ALL BURRS GREAT EXTERNAL DIMS. 0.00 TO 0.015 FILLERS 0.005 TO 0.010 COVER THREADS PER UNF-2B79 DIA'S ON A COMMON 0.05005	UPDATE DRAWN <td>P. TRAN <td>Jan-06-14 </td></td>	P. TRAN <td>Jan-06-14 </td>	Jan-06-14
MACHINED SURFACES	APPROVED <td>S. HUYNH <td>Jan-06-14 </td></td>	S. HUYNH <td>Jan-06-14 </td>	Jan-06-14
DO NOT SCALE DRAWING			

ANTCOM CORP.	Low Profile Ruggedized	Thuraya/Tx-Gobalstar & Rx-Inmarsat/GPS	Antenna
D	3CVE1	1.5G1516RL-X-XSS-4	
SCALE 1/1			SHEET 1 OF 1

NMO Connector is Now Available for Some Antennas