



FAA Approved Facility

Hermetically Sealed, Ruggedized and High Vibration/Shock Resistant Active GPS/Glonass Antenna

P/N: 1.3G1215A2-XRS-4-SO10 (L1/L2), P/N: 1.3G15A2-XRS-4-SO10 (L1)

L1/Inmarsat/Iridium: P/N: 1.3GL1RxINA2-XRS-4-SO10 (Active Rx only), P/N: 1.3GL1RxINP-XRS-4-SO10 (Passive Tx/Rx)

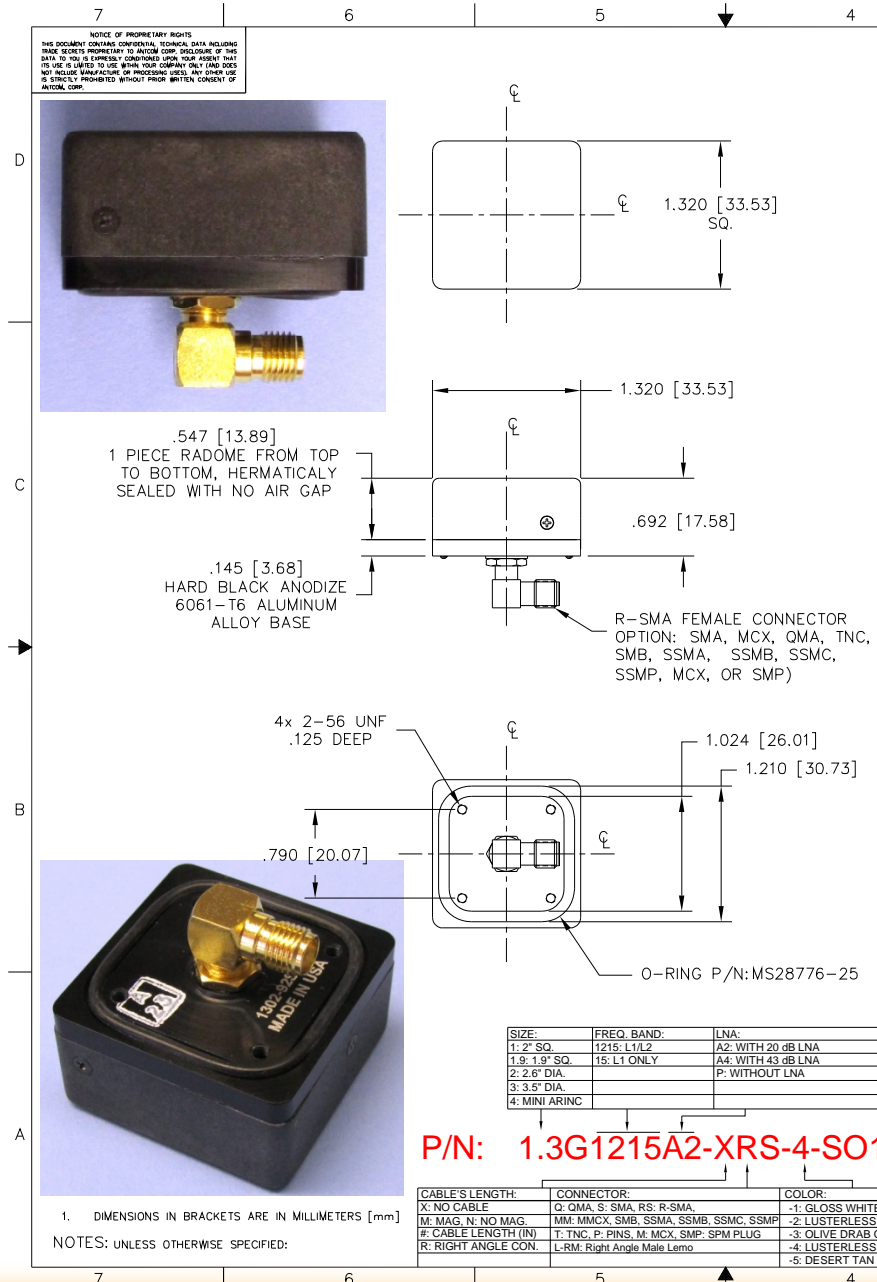
Other Frequency Bands are also Available

Back Mount, Bottom Connector Configuration with O-Ring

Antenna Mounts: <http://www.antcom.com/documents/catalogs/PeripheralAntennaProducts2.pdf>



ANTCOM CORPORATION . 367 Van Ness Way, Suite 602 . Torrance, CA 90501 . Tel: (310) 782-1076 . Fax: (310) 782-1086 . E-mail: antennas@antcom.com . <http://www.antcom.com>



SPECIFICATIONS

ZONE	REV	REVISIONS		
		DESCRIPTION	DATE	APPROVED
-	-	-	-	-

ELECTRICAL:		L1 GPS: 1575.42 ± 15.0 MHz		L2 GPS: 1227.60 ± 12 MHz	
FREQUENCY:		L1 GLONASS: 1598 - 1609 MHz		L2 GLONASS: 1242 - 1252 MHz	
RADIATION PATTERN:		HEMISPHERICAL			
POLARIZATION:		RHCP			
VSWR:		< 2.0:1		< 2.0:1	
IMPEDANCE:		50 ohms		50 ohms	
ANTENNA GAIN (dBi):		Free Space		Free Space	
@ 90° (ZENITH):		+ 0.4		+ 3.2	
@ 10° Elevation:		- 4.6		- 4.1	
@ 15° Elevation:		- 4.5		- 3.8	
@ 20° Elevation:		- 4.5		- 3.5	
@ 30° Elevation:		- 3.3		- 1.8	
@ 40° Elevation:		- 2.5		- 0.6	
@ 50° Elevation:		- 2.0		+ 0.5	
@ 60° Elevation:		- 1.5		+ 1.5	
@ 70° Elevation:		- 0.7		+ 2.4	
@ 80° Elevation:		+ 0.1		+ 3.0	
BEAM WIDTH (3dB):		100 Deg.		80 Deg.	
AXIAL RATIO:		1.0 dB		3.0 dB	
LIGHTNING PROTECTION:		DC GROUNDING			

LNA OPTION:

LNA GAIN:	24.0 dB
LNA NOISE FIGURE:	1.8 dB
LNA P 1dB Out:	+16 dBm
VOLTAGE/CURRENT:	(+2.8 TO +28) Volts DC / (15 TO 25) mA

MECHANICAL:

SIZE:	1.320 in [33.53 mm] SQ. HEIGHT: .692 in [17.58 mm]
WEIGHT:	1.9 oz. (53.9 g)
FINISH:	BASE: HARD BLACK ANODIZE PER MIL-A-8625F, TYPE III, CLASS 2 RADOME: SKYDROL RESISTANT POLYURETHANE ENAMEL PER FED-STD-595B
MATERIAL:	6061-T6 ALUMINUM ALLOY BASE COMPOSITE RADOME, ABRASION, UV, SOLVENT, SKYDROL RESISTANCE, AND FIRE RETARDANT
CONNECTOR:	R-SMA FEMALE CONNECTOR OPTION: SMA, MCX, QMA, TNC, SMB, SSMA, SSMB, SSMC, SSMP, MCX, OR SMP

ENVIRONMENTAL:

TEMPERATURE:	-67 °F TO +185 °F [-55 °C TO +85 °C]
ALTITUDE:	70,000 ft.
VIBRATION:	> 30 G's
LEAKAGE:	HERMETICALLY SEAL

FEDERAL & MILITARY SPECIFICATIONS:

DESIGN TO:	FAA TSO-C144, DO-160D, D0-228, MIL-C-5541, MIL-E-5400, MIL-I-45208A, MIL-STD-810, AND SAE J1455
ACCEPTANCE TEST PROCEDURE:	ATP-GPS-L1L2-100

1	0-RING	MS28776-25	-	-	-	1		
-2	-1	DESCRIPTION	PART NO	SPECIFICATION	MATERIAL	FINISH	REV NO	
QUANTITY REQD		PARTS LIST						
UNLESS OTHERWISE SPECIFIED		DRAWING USE IN INCHES					ANTCOM CORP. TORRANCE CALIFORNIA HERMETICALLY SEALED ACTIVE L1/L2 GPS/GLONASS ANTENNA	
DIMENSIONS DECIMALS AND ANGLES		ORIGINAL DRAWN S. HUYNH Mar-11-05						
FRACTIONS THIRDS AND ANGLES ± 1/64 .001 .005 ± .1		ORIGINAL DESIGNED S. HUYNH Mar-11-05						
TOLERANCE SURF PER ANSI Y14.5		UPDATED S. HUYNH April-19-13						
REMOVE ALL SHARP BREAKS EXTERNAL EDGES .005 TO .015		UPDATE DRAWN P. TRAN April-19-13					SCALE 1/1 SHEET 1 OF 1	
FITS TO 90 TO 100 SORE THE 100 PER MIL-S-8879 DVS ON A COMMON 2.00 DIA		APPROVED S. HUYNH April-19-13					P. TRAN D 3CVE1 1.3G1215A2-XRS-4-SO10	
MACHINED SURFACES 12.5		DO NOT SCALE DRAWING						

NMO Connector Option is Now Available for Some Antennas