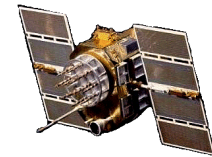




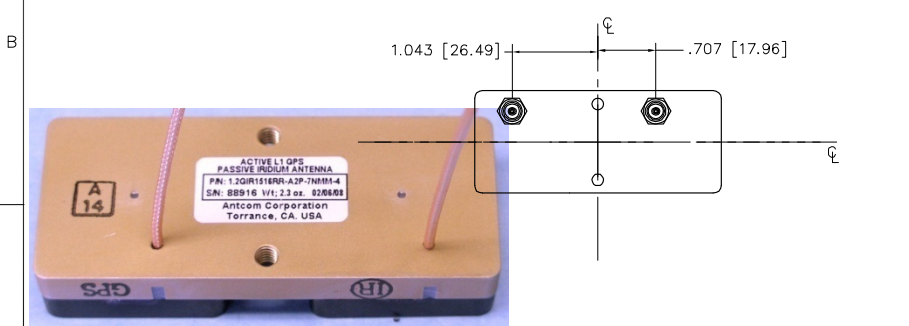
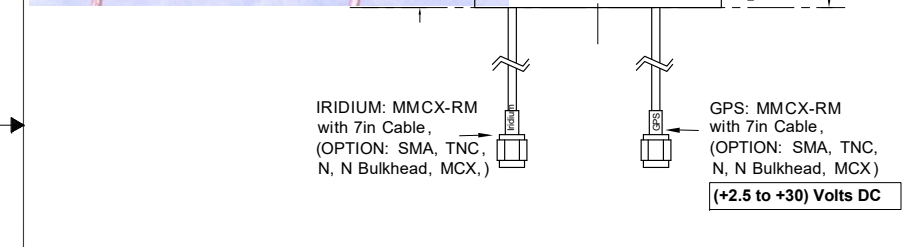
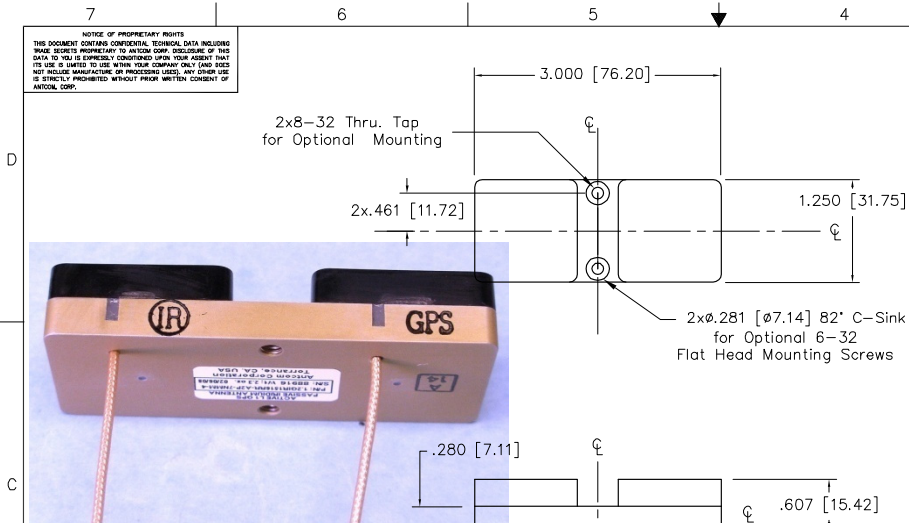
ISO 9001:2008/FAA Approved Facility

Active GPS & (IRIDIUM/Inmarsat or Thuraya) Antenna
 P/N: 1.2GIR1516RR-A2P-7MM-4
 (1.2"x 3.0"x 0.6"), Front, or Back Mount with Bottom Cable



Antenna Mounts: <http://www.antcom.com/documents/catalogs/PeripheralAntennaProducts2.pdf>

ANTCOM CORPORATION . 367 Van Ness Way, Suite 602 . Torrance, CA 90501 . Tel: (310) 782-1076 . Fax: (310) 782-1086 . E-mail: antennas@antcom.com . <http://www.antcom.com>



CONFIGURATION:	FREQ BAND	GPS/IRIDIUM/A:	CABLE LENGTH	GPS/IRIDIUM/CONNECTOR:	COLOR
1: 2" SQ. (FLAT)	1516:L1 GPS & IRIDIUM	A: WITH LNA	X: NO CABLE	S: SMA; P: PINS	-1: GLOSSWHITE#17925PERFED-STD-595B
1.9: 1.9" SQ. (FLAT)	1216:L1/L2GPS	P: WITHOUT LNA	MN: FlushMag. Mount	M: MCX; MM: MMCX	-2: LUSTERLESSGRAY#36320PERFED-STD-595B
2: 2.6" DIA. (FLAT)	GPS & IRIDIUM		#: CableLength(in)	N: N; NB: N-Bulkhead	-3: OLIVEDRABGREEN#34031PERFED-STD-595B
3: 3.5" DIA. (FLAT)	1625: GLOBALSTAR	A2: WITH20dB LNA	R: RIGHT ANGLECON.	T: TNC; TB: TNC-Bulkhead	-4: LUSTERLESSBLACK#37038PERFED-STD-595B
4: MINI ARINC (FLAT)	1523: GPS & XM				
53: (HELIXROD)	1525: GPS & WI-FI				
5B: (HELIXBLADE)					
3D: (HELIXHANDHELD)					

P/N: 1.2G1516RR-A2P-7MM-4

SPECIFICATIONS

ELECTRICAL:	
FREQUENCY:	IRIDIUM (1610.0 - 1626.5) MHz GPS L1: (1575.42 ±13)
RADIATION PATTERN:	HEMISPHERICAL HEMISPHERICAL
POLARIZATION:	RHCP RHCP
VSWR:	< 1.5:1 < 1.5:1
GAIN (dB):	Free Space F.S.
@ 90° (Zenith):	0.0 0.0
@ 10° Elevation:	- 7.5 - 7.5
@ 20° Elevation:	- 5.5 - 6.1
@ 30° Elevation:	- 4.0 - 4.5
@ 60° Elevation:	- 2.3 - 1.4
BEAM WIDTH (3dB):	98 °-106 ° 103 °
AXIAL RATIO @ Zenith:	2 dB 2 dB
POWER HANDLING:	30 W 1 Watt
LIGHTNING PROTECTION:	DC GROUNDIN G DC GROUNDIN G
LNA GAIN:	N/A (33.0+/-1.0) dB, 20dB (-A2- Option)
LNA P 1dB Out:	N/A +16 dBm
LNA NOISE FIGURE:	N/A 2.8 dB
VOLTAGE/CURRENT:	N/A (+2.8 TO +28) Volts DC / (30) mA

MECHANICAL:

SIZE:	WIDTH: 1.25in. [31.7 mm], LENGTH: 3in [76.2 mm], HEIGHT: 0.6 in. [15.4 mm]
WEIGHT:	2.3 oz. (65 g)
FINISH:	SKYDROLRESISTANTPOLYURETHANEENAMEL, AND CHEMFILM
MATERIAL:	6061-T6ALUMINUMALLOY BASE COMPOSITE RADOME, IMPACT, ABRASION, UV, SOLVENT, ANDSKYDROLRESISTANCE, FIRE RETARDANT
CONNECTOR:	IRIDIUM:MMCX-RM(J1, Red); GPS: MMCX-RM(J2, Blue)
MOUNTING:	FLAT FRONT (2 x 6-32 SCREWS),BACK (2 x 8-32 SCREWS),

ENVIRONMENTAL:

TEMPERATURE:	-67 °F TO +185 °F [-55 °C TO +85 °C]
ALTITUDE:	70,000ft.
VIBRATION:	> 30 G's
LEAKAGE:	HERMETICALLYSEALED

FEDERAL & MILITARY SPECIFICATIONS

DESIGN TO: FAA TSO-C144, DO-160D, DO-228, MIL-C-5541, MIL-E-5400, MIL-I-45208A, MIL-STD-810, AND SAE J1455

QUANTITY REQD	DESCRIPTION	PART NO	MATERIAL	FINISH	REV
4					5
1					3
					1

UNLESS OTHERWISE SPECIFIED DIMENSIONS ARE IN INCHES TOLERANCES ARE:		ANTCOM CORP. TORRANCE CALIFORNIA	
FRACTIONS	DECIMALS	ANGLES	
± 1/64	± .005	± 1°	
	± .001		

DATE	BY	CHKD	APP'D	REV
JUN-27-07	S. HUYNH			1

SCALE	SHEET
1/1	1 OF 1

NMO Connector Option is Now Available for Some Antennas