



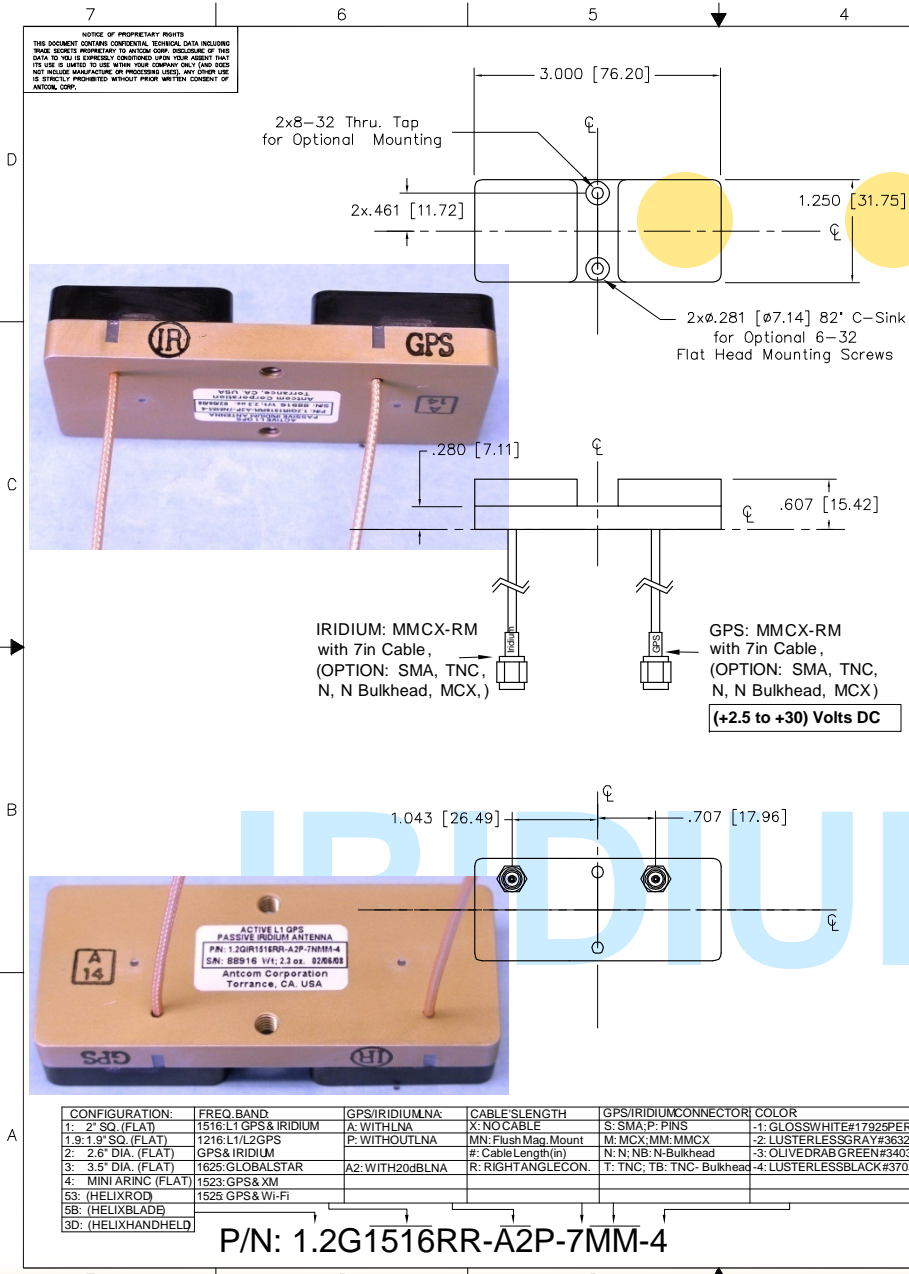
ISO 9001:2008/FAA Approved Facility

Active GPS & (IRIDIUM/Inmarsat or Thuraya) Antenna

P/N: 1.2GIR1516RR-A2P-7MM-4
(1.2"x 3.0"x 0.6"), Front, or Back Mount with Bottom Cable



ANTCOM CORPORATION . 367 Van Ness Way, Suite 602 . Torrance, CA 90501, USA . Tel: (310) 782-1076 . Fax: (310) 782-1086 . E-mail: antennas@antcom.com . http://www.antcom.com



SPECIFICATIONS

ELECTRICAL:		
FREQUENCY:	IRIDIUM (1610.0 - 1626.5) MHz	GPS L1: (1575.42 ±13)
RADIATION PATTERN:	HEMISPHERICAL	HEMISPHERICAL
POLARIZATION:	RHCP	RHCP
VSWR:	< 1.5:1	< 1.5:1
GAIN (dB):	Free Space	F.S.
@ 90° (Zenith):	0.0	0.0
@ 10° Elevation:	- 7.5	- 7.5
@ 20° Elevation:	- 5.5	- 6.1
@ 30° Elevation:	- 4.0	- 4.5
@ 60° Elevation:	- 2.3	- 1.4
BEAM WIDTH (3dB):	98 °-106 °	103 °
AXIAL RATIO @ Zenith:	2 dB	2 dB
POWER HANDLING:	30 W	1 Watt
LIGHTNING PROTECTION:	DC GROUNDING	DC GROUNDING
LNA GAIN:	N/A	(33.0+/-1.0) dB, 20dB (-A2- Option)
LNA P 1dB Out:	N/A	+16 dBm
LNA NOISE FIGURE:	N/A	2.8 dB
VOLTAGE/CURRENT:	N/A	(+2.8 TO +28) Volts DC / (30) mA

MECHANICAL:	
SIZE:	WIDTH: 1.25in. [31.7 mm], LENGTH: 3in [76.2 mm], HEIGHT: 0.6 in. [15.4 mm]
WEIGHT:	2.3 oz. (65 g)
FINISH:	SKYDROLRESISTANTPOLYURETHANEENAMEL, AND CHEMFILM
MATERIAL:	6061-T6 ALUMINUMALLOY BASE COMPOSITE RADOME, IMPACT, ABRASION, UV, SOLVENT, ANDSKYDROLRESISTANCE, FIRE RETARDANT
CONNECTOR:	IRIDIUM: MMCX-RM(J1, Red); GPS: MMCX-RM(J2, Blue)
MOUNTING:	FLAT FRONT (2 x 6-32 SCREWS), BACK (2 x 8-32 SCREWS),

ENVIRONMENTAL:	
TEMPERATURE:	-67 °F TO +185 °F [-55 °C TO +85 °C]
ALTITUDE:	70,000ft.
VIBRATION:	> 30 G's
LEAKAGE:	HERMETICALLYSEALED

FEDERAL & MILITARY SPECIFICATIONS	
DESIGN TO:	FAA TSO-C144, DO-160D, DO-228, MIL-C-5541, MIL-E-5400, MIL-I-45208A, MIL-STD-810, AND SAE J1455

QUANTITY	DESCRIPTION	PART NO	MATERIAL	FINISH	ITEM NO
4					5
1					3
1					1

UNLESS OTHERWISE SPECIFIED DIMENSIONS ARE IN INCHES FRACTIONS: DECIMALS ANGLES	
1/16 1/32 1/64 3/128 1/2 1 1 1/2 2 3 4	± .010 ± .005 ± .002 ± .001 ± .0005 ± .0002

ANTCOM CORP.	
Torrance, California	
Low Profile Ruggedized Active GPS/IRIDIUM Antenna	
DATE: 3CVE1	REV: 1
SCALE: 1/1	SHEET: 1 OF 1

CONFIGURATION:	FREQ. BAND	GPS/IRIDIUM/NA	CABLE LENGTH	GPS/IRIDIUM CONNECTOR	COLOR
1: 2" SQ. (FLAT)	1516: L1 GPS & IRIDIUM	A: WITH LNA	X: NO CABLE	S: SMA; P: PINS	-1: GLOSS WHITE #17925 PER FED-STD-595B
1.9: 1.9" SQ. (FLAT)	1216: L1/L2 GPS	P: WITHOUT LNA	MIN: Flush Mag. Mount	M: MCX; MM: MMCX	-2: LUSTERLESS GRAY #36320 PER FED-STD-595B
2: 2.6" DIA. (FLAT)	GPS & IRIDIUM		#: Cable Length (in)	N: N; NB: N-Bulkhead	-3: OLIVE DRAB GREEN #34031 PER FED-STD-595B
3: 3.5" DIA. (FLAT)	1625: GLOBALSTAR	A2: WITH 20dB LNA	R: RIGHT ANGLE CON.	T: TNC; TB: TNC-Bulkhead	-4: LUSTERLESS BLACK #37038 PER FED-STD-595B
4: MINI ARING (FLAT)	1523: GPS & XM				
53: (HELIX ROD)	1523: GPS & WI-FI				
5B: (HELIX BLADE)					
3D: (HELIX HANDHELD)					

P/N: 1.2G1516RR-A2P-7MM-4

NMO Connector Option is Now Available for Some Antennas