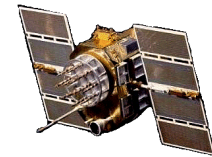




Active or Passive L1/L2 GPS Antenna, P/N: 1.2G1215X-XXN-X Rev A

(Improved Gain) 1.2" Square, Flat Mount Configurations



ISO 9001:2008/FAA Approved Facility Antenna Mounts: <http://www.antcom.com/documents/catalogs/PeripheralAntennaProducts2.pdf>

ANTCOM CORPORATION . 367 Van Ness Way, #602 . Torrance, CA 90501 . Tel: (310) 782-1076 . Fax: (310) 782-1086 . E-mail: antennas@antcom.com . <http://www.antcom.com>

NOTICE OF PROPRIETARY RIGHTS
THIS DOCUMENT CONTAINS CONFIDENTIAL, TECHNICAL DATA INCLUDING TRADE SECRETS PROPRIETARY TO ANTCOM CORP. DISCLOSURE OF THIS DATA TO YOU IS EXPRESSLY PROHIBITED UNLESS YOU AGREE THAT THE USE IS LIMITED TO USE WITHIN YOUR COMPANY ONLY AND DOES NOT INCLUDE MANUFACTURE OR PROCESSING CAPS. ANY OTHER USE IS EXPRESSLY PROHIBITED WITHOUT PRIOR WRITTEN CONSENT OF ANTCOM CORP.

SPECIFICATIONS

ZONE		REVISIONS		DATE	APPROVED
A	3dB More In Gain			Sep-21-06	S.H
A2	Correction to <30mA			July-05-16	S.H

ELECTRICAL:

	L1: (1575.42 ±12) MHz		L2: (1227.60 ±12) MHz	
FREQUENCY:				
RADIATION PATTERN:	HEMISPHERICAL			
POLARIZATION:	RHCP			
VSWR:	< 1.5:1		< 1.5:1	
IMPEDANCE:	50 ohms		50 ohms	
ANTENNA GAIN (dBic):	Free Space	3 in G.P.	Free Space	3 in G.P.
@ 90 ° (ZENITH):	- 0.8	+ 3.8	-3.7	+ 2.7
@ 10 ° Elevation:	- 9.3	- 4.3	-9.9	- 6.3
@ 20 ° Elevation:	- 6.8	- 2.2	-9.2	- 4.2
@ 30 ° Elevation:	- 5.2	- 0.7	-7.8	- 2.4
@ 60 - 90 ° Elevation:	> - 2.1	> 2.5	> - 4.7	> 1.3
BEAM WIDTH (3dB):	100 Deg.	120 Deg.	100 Deg.	90 Deg.
AXIAL RATIO:	2.5 dB		3	
LIGHTNING PROTECTION:	DC GROUNDING			

LNA OPTION:

LNA GAIN:	24.0 dB
LNA NOISE FIGURE:	1.8 dB
LNA P 1dB Out:	+16 dBm
VOLTAGE/CURRENT:	(+2.8 TO +28) Volts DC / <30 mA

MECHANICAL:

SIZE:	1.250 in.[31.75 mm] SQ.
HEIGHT:	0.547 in. [13.89 mm]
WEIGHT:	1.1 oz. (31.2 g)
FINISH:	SKYDROL RESISTANT POLYURETHANE ENAMEL BASE IRIDITE PER MIL-C-5441F
MATERIAL:	6061-T6 ALUMINUM ALLOY BASE COMPOSITE RADOME, ABRASION, UV, SOLVENT, SKYDROL RESISTANCE, AND FIRE RETARDANT
CONNECTOR:	4.5" LONG FLEXIBLE CABLE WITH RIGHT ANGLE MMCX (OPTION: MCX, SMA, SMB, SSMA, SSBM, SSMC, OR TNC)

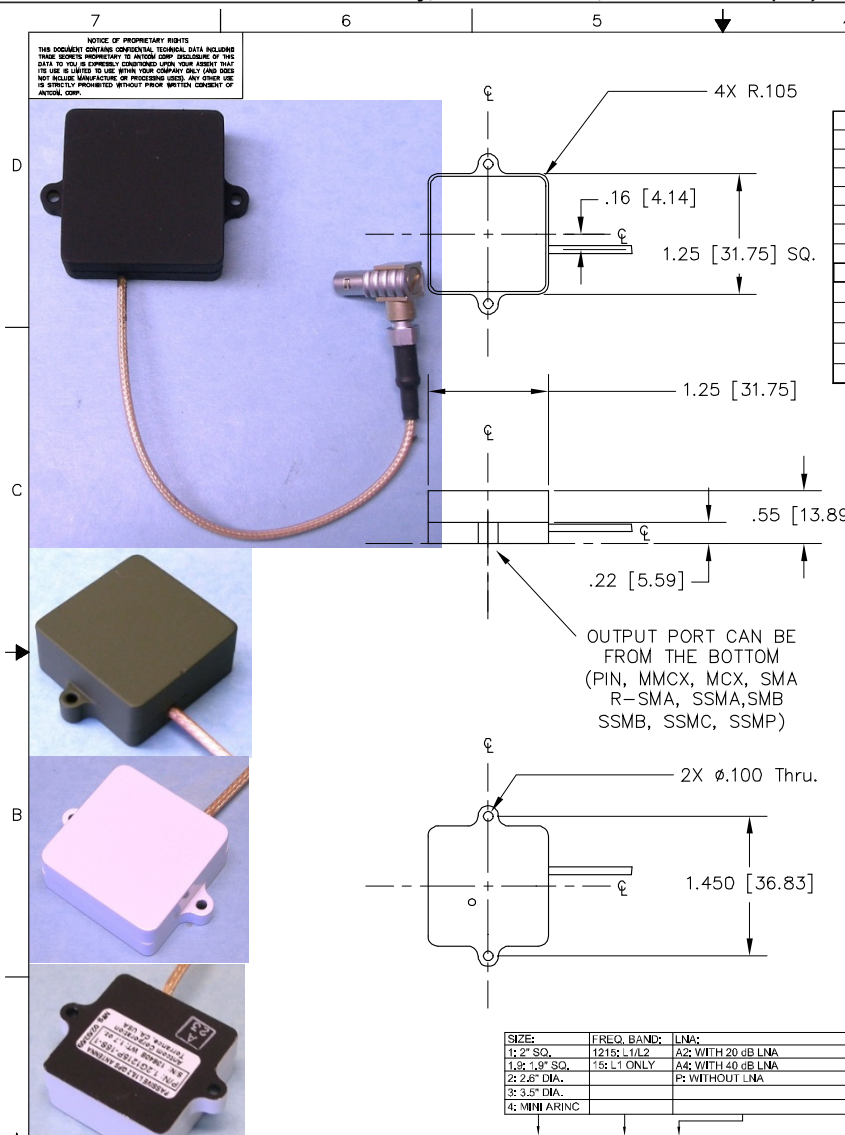
ENVIRONMENTAL:

TEMPERATURE:	-67 °F TO +185 °F [-55 °C TO +85 °C]
ALTITUDE:	70,000 ft.
VIBRATION:	> 30 G's
LEAKAGE:	HERMETICALLY SEAL

FEDERAL & MILITARY SPECIFICATIONS:

DESIGN TO: FAA TSO-C144, DO-160D, D0-228, MIL-C-5541, MIL-E-5400, MIL-145208A, MIL-STD-810, AND SAE J1455

ACCEPTANCE TEST PROCEDURE: ATP-GPS-L1L2-100



OUTPUT PORT CAN BE FROM THE BOTTOM (PIN, MMCX, MCX, SMA R-SMA, SSMA, SMB, SSBM, SSMC, SSMP)

SIZE:	FREQ. BAND:	LNA:
1: 2" SQ.	1215:L1/L2	A2: WITH 20 dB LNA
1.8, 1.9" SQ.	15: L1 ONLY	A4: WITH 40 dB LNA
2: 2.6" DIA.		P: WITHOUT LNA
3: 3.5" DIA.		
4: MINI ARINC		

QUANTITY REQD	DESCRIPTION	PART NO	SPECIFICATION	MATERIAL	FINISH	REF NO
1	ADHESIVE GASKET	12345G-3M-1.2G				1

P/N: 1.2G1215A2-XXNM-4

CABLE LENGTH:	CONNECTOR:	COLOR:
X: NO CABLE	S: SMA; RS: R-SMA; P: PINS; M: MCX;	-1: GLOSS WHITE #17925 PER FED-STD-595B
M: MAG. IN; NO MAG.	MM: MMCX; SMB: SSMA; SSBM; SSMC;	-2: LUSTERLESS GRAY #36320 PER FED-STD-595B
#: CABLE LENGTH (IN)	SSMP: T. TB: TNC; TNC-Bulkhead	-3: CAMO GREEN #34094 PER FED-STD-595B
R: RIGHT ANGLE CON.	L-RM: Right Angle Male Lemo	-4: LUSTERLESS BLACK #37038 PER FED-STD-595B
		-5: DESERT TAN #33446 PER FED-STD-595B

1. DIMENSIONS IN BRACKETS ARE IN MILLIMETERS [mm]
NOTES: UNLESS OTHERWISE SPECIFIED:

UNLESS OTHERWISE SPECIFIED DIMENSIONS ARE IN INCHES DECIMALS ANGLES ± 1/64 .005 .005 ± 1°

TOLERANCE .010 PER ANSI Y14.5
BREAK EXTERNAL EDGES .005 TO .015
SEEK CHANGES PER MIL-C-8878
DAYS ON A COMMON 1, 2, 3, 5, 10

DO NOT SCALE DRAWING

ANTCOM CORP. TORRANCE, CALIFORNIA

OUTLINE DRAWING
L1/L2 ACTIVE or PASSIVE
GPS ANTENNA

DATE: 06/16/16
D: 3CVE11 1.2G1215X-XXN-X A2
SCALE: 1/1
SHEET: 1 OF 1

NMO Connector Option is Now Available for Some Antennas