



FAA Approved Facility

# Dual Linear (V/H) L1/L2 GPS Antenna, P/N: 1.2G1215P2L-8NSSF-4 1.2" Square, Flat Mount Configuration

Antenna Mounts: <http://www.antcom.com/documents/catalogs/PeripheralAntennaProducts2.pdf>



ANTCOM CORPORATION . 367 Van Ness Way, Suite 602 . Torrance, CA 90501 . Tel: (310) 782-1076 . Fax: (310) 782-1086 . E-mail: [antennas@antcom.com](mailto:antennas@antcom.com) . <http://www.antcom.com>

NOTICE OF PROPRIETARY RIGHTS  
THIS DOCUMENT CONTAINS CONFIDENTIAL TECHNICAL DATA INCLUDING TRADE SECRETS PROPRIETARY TO ANTCOM CORP. REPRODUCTION OF THIS DATA TO YOU IS EXPRESSLY PROHIBITED UNLESS YOU AGREE THAT ITS USE IS LIMITED TO USE WITHIN YOUR COMPANY ONLY (AND DOES NOT INCLUDE MANUFACTURE OR REPRODUCTION THEREOF). ANY OTHER USE IS EXPRESSLY PROHIBITED WITHOUT PRIOR WRITTEN CONSENT OF ANTCOM CORP.

## SPECIFICATIONS

REVISIONS		DATE	APPROVED
ZONE	REV	DESCRIPTION	
A		3dB More In Gain	S.H.

### ELECTRICAL:

	L1: (1575.42 ±12) MHz	L2: (1227.60 ±12) MHz
FREQUENCY:		
RADIATION PATTERN:	HEMISPHERICAL	
POLARIZATION:	DUAL LINEAR (V/H)	
VSWR:	< 1.5:1	< 1.5:1
IMPEDANCE:	50 ohms	50 ohms
ANTENNA GAIN (dBic):	Free Space 3 in G.P.	Free Space 3 in G.P.
@ 90° (ZENITH):	-0.8 +3.8	-3.7 +2.7
@ 10° Elevation:	-9.3 -4.3	-9.9 -6.3
@ 20° Elevation:	-6.8 -2.2	-9.2 -4.2
@ 30° Elevation:	-5.2 -0.7	-7.8 -2.4
@ 60 - 90° Elevation:	> -2.1 > 2.5	> -4.7 > 1.3
BEAM WIDTH (3dB):	100 Deg. 120 Deg.	100 Deg. 90 Deg.
AXIAL RATIO:		
LIGHTNING PROTECTION:	DC GROUNDING	

### LNA OPTION:

LNA GAIN:	24.0 dB
LNA NOISE FIGURE:	1.8 dB
LNA P 1dB Out:	+16 dBm
VOLTAGE/CURRENT:	(+2.8 TO +28) Volts DC / (15 TO 25) mA

### MECHANICAL:

SIZE:	1.250 in.[31.75 mm] SQ.
HEIGHT:	0.547 in. [13.89 mm]
WEIGHT:	1.1 oz. (31.2 g)
FINISH:	SKYDROL RESISTANT POLYURETHANE ENAMEL BASE IRIDITE PER MIL-C-5441
MATERIAL:	6061-T6 ALUMINUM ALLOY BASE COMPOSITE RADOME, ABRASION, UV, SOLVENT, SKYDROL RESISTANCE, AND FIRE RETARDANT
CONNECTOR:	4.5" LONG FLEXIBLE CABLE with RIGHT ANGLE MMCX (OPTION: MCX, SMA, SMB, SSMA, SSMB, SSMC, OR TNC)

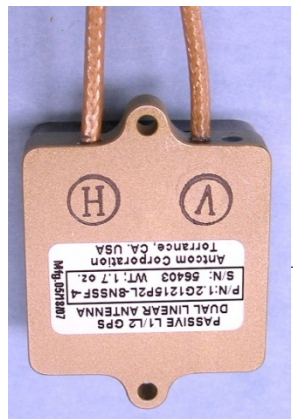
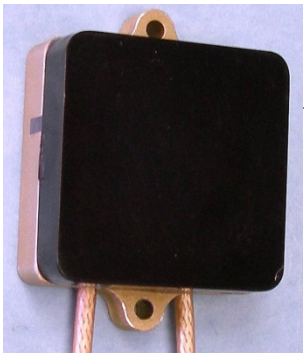
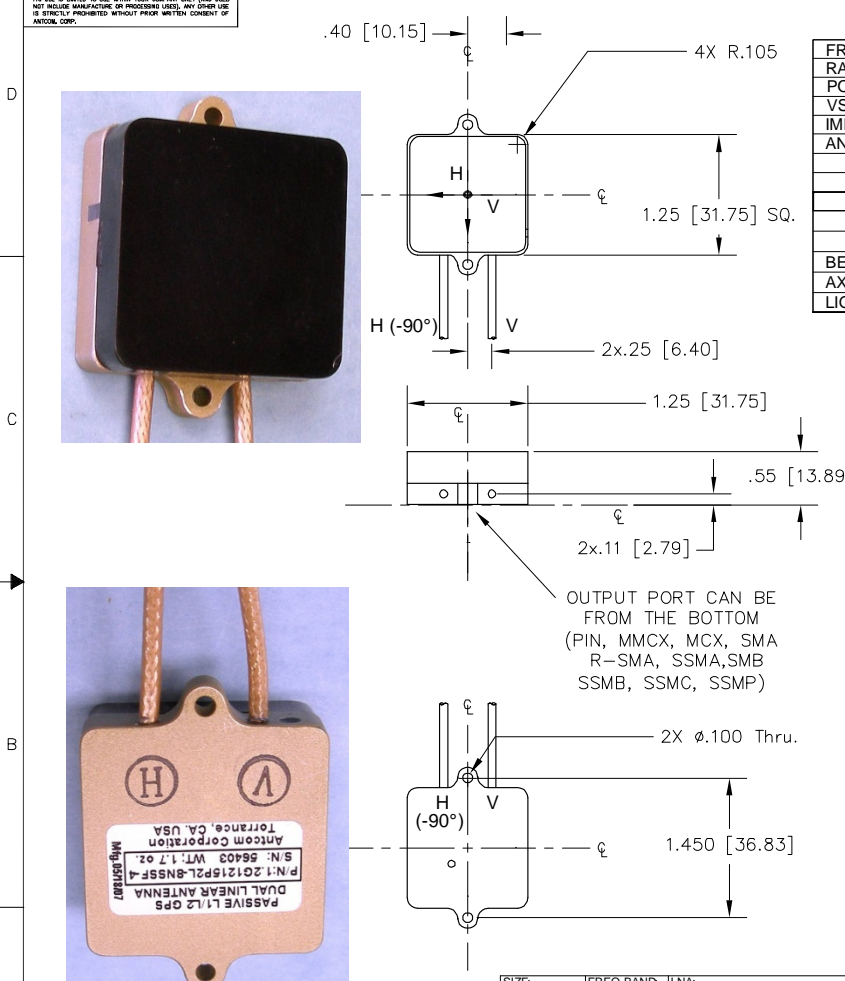
### ENVIRONMENTAL:

TEMPERATURE:	-67 °F TO +185 °F [-55 °C TO +85 °C]
ALTITUDE:	70,000 ft.
VIBRATION:	> 30 G's
LEAKAGE:	HERMETICALLY SEAL

### FEDERAL & MILITARY SPECIFICATIONS:

DESIGN TO: FAA TSO-C144, DO-160D, D0-228, MIL-C-5541,  
MIL-E-5400, MIL-I-45208A, MIL-STD-810, AND SAE J1455

ACCEPTANCE TEST PROCEDURE: ATP-GPS-L1L2-100



SIZE	FREQ. BAND	LNA:
1: 2" SQ.	1215:L1/L2	A2: WITH 20dB LNA
1.9: 1.9" SQ.	15:L1 ONLY	A4: WITH 40dB LNA
2: 2.6" DIA.		P: PASSIVE (WITHOUT LNA)
3: 3.5" DIA.		P2: DUAL OP (RHG/PLHCP AND PASSIVE (WITHOUT LNA)
4: MINIARINC		P2L: DUAL LINEAR (VERT. HOR. AND PASSIVE (WITHOUT LNA)

P/N: 1.2G1215P2L-8NSSF-4

CABLE LENGTH	CONNECTOR	COLOR
X: NO CABLE	SS: SMA MALE, SSF: SMA FEMALE	-1: GLOSS WHITE #17925 PER FED-STD-595B
#: CABLE LENGTH (IN)	MM: MCX MALE, MMF: MCX FEMALE	-2: LUSTERLESS GRAY #36320 PER FED-STD-595B
	OTHER CONNECTORS ARE ALSO AVAILABLE	-3: OLIVE DRAB GREEN #34031 PER FED-STD-595B
		-4: LUSTERLESS BLACK #37038 PER FED-STD-595B

1. DIMENSIONS IN BRACKETS ARE IN MILLIMETERS [mm]  
NOTES: UNLESS OTHERWISE SPECIFIED:

UNLESS OTHERWISE SPECIFIED DIMENSIONS ARE IN INCHES FRACTIONS: DECIMALS: ANGLES: ± 1/64 .005 .015 ± 1°

TOLERANCE .51M PER ANSI Y14.5

REWORK: ALL SURFACES SHALL EXTERNAL EDGES .005 TO .015 RADIUS .015 TO .030 RADIUS .015 TO .030 RADIUS .015 TO .030 RADIUS MACHINED SURFACES

DO NOT SCALE DRAWING

**ANTCOM CORP.** TORRANCE, CALIFORNIA

DUAL LINEAR (V/H) L1/L2 ACTIVE or PASSIVE GPS ANTENNA

DATE: 11-05  
DRAWN: S. HUYNH  
CHECKED: S. HUYNH  
APPROVED: S. HUYNH  
CAP FILE NO: D:\3CVE1\1.2G1215P2L-8NSSF-4

SCALE: 1/1  
SHEET: 1 OF 1

http://www.antcom.com/documents/catalogs/PeripheralAntennaProducts1.pdf (Amplifiers/Power Divider/Combiner/Filters)