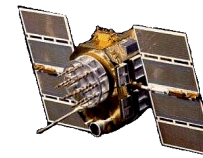




Dual Linear (V/H) L1/L2 GPS Antenna, P/N: 1.2G1215P2L-8NSSF-4

1.2" Square, Flat Mount Configuration



ISO 9001:2008/FAA Approved Facility

Antenna Mounts: <http://www.antcom.com/documents/catalogs/PeripheralAntennaProducts2.pdf>

ANTCOM CORPORATION . 367 Van Ness Way, #602 . Torrance, CA 90501 . Tel: (310) 782-1076 . Fax: (310) 782-1086 . E-mail: antennas@antcom.com . <http://www.antcom.com>

NOTICE OF PROPRIETARY RIGHTS
THIS DOCUMENT CONTAINS CONFIDENTIAL TECHNICAL DATA INCLUDING TRADE SECRETS PROPRIETARY TO ANTCOM CORP. DISCLOSURE OF THIS DATA TO YOU IS EXPRESSLY CONDITIONED UPON YOUR ASSENT THAT ITS USE IS LIMITED TO USE WITHIN YOUR COMPANY ONLY AND DOES NOT INCLUDE MANUFACTURE OR REPRODUCTION. ANY OTHER USE IS EXPRESSLY PROHIBITED WITHOUT PRIOR WRITTEN CONSENT OF ANTCOM CORP.

SPECIFICATIONS

REVISIONS				
ZONE	REV	DESCRIPTION	DATE	APPROVED
A		3dB More In Gain	Sep-21-06	S.H

ELECTRICAL:

	L1: (1575.42 ±12) MHz	L2: (1227.60 ±12) MHz
FREQUENCY:		
RADIATION PATTERN:	HEMISPHERICAL	
POLARIZATION:	DUAL LINEAR (V/H)	
VSWR:	< 1.5:1	< 1.5:1
IMPEDANCE:	50 ohms	50 ohms
ANTENNA GAIN (dBic):	Free Space 3 in G.P.	Free Space 3 in G.P.
@ 90° (ZENITH):	-0.8 +3.8	-3.7 +2.7
@ 10° Elevation:	-9.3 -4.3	-9.9 -6.3
@ 20° Elevation:	-6.8 -2.2	-9.2 -4.2
@ 30° Elevation:	-5.2 -0.7	-7.8 -2.4
@ 60 - 90° Elevation:	> -2.1 > 2.5	> -4.7 > 1.3
BEAM WIDTH (3dB):	100 Deg. 120 Deg.	100 Deg. 90 Deg.
AXIAL RATIO:		
LIGHTNING PROTECTION:	DC GROUNDING	

LNA OPTION:

LNA GAIN:	24.0 dB
LNA NOISE FIGURE:	1.8 dB
LNA P 1dB Out:	+16 dBm
VOLTAGE/CURRENT:	(+2.8 TO +28) Volts DC / (15 TO 25) mA

MECHANICAL:

SIZE:	1.250 in. [31.75 mm] SQ.
HEIGHT:	0.547 in. [13.89 mm]
WEIGHT:	1.1 oz. (31.2 g)
FINISH:	SKYDROL RESISTANT POLYURETHANE ENAMEL BASE IRIDIUM PER MIL-C-5441
MATERIAL:	6061-T6 ALUMINUM ALLOY BASE COMPOSITE RADOME, ABRASION, UV, SOLVENT, SKYDROL RESISTANCE, AND FIRE RETARDANT
CONNECTOR:	4.5" LONG FLEXIBLE CABLE with RIGHT ANGLE MMCX (OPTION: MCX, SMA, SMB, SSMA, SSMB, SSMC, OR TNC)

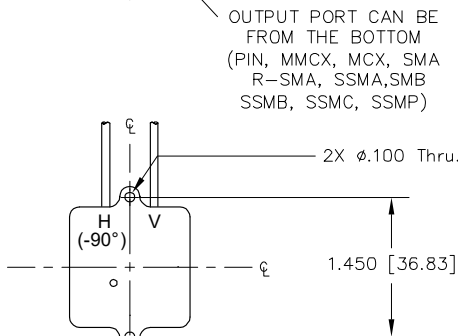
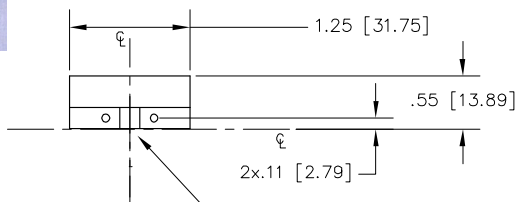
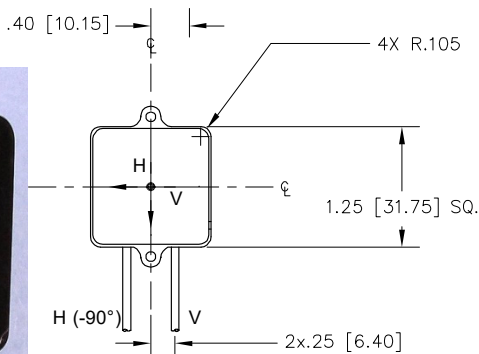
ENVIRONMENTAL:

TEMPERATURE:	-67 °F TO +185 °F [-55 °C TO +85 °C]
ALTITUDE:	70,000 ft.
VIBRATION:	> 30 G's
LEAKAGE:	HERMETICALLY SEAL

FEDERAL & MILITARY SPECIFICATIONS:

DESIGN TO: FAA TSO-C144, DO-160D, D0-228, MIL-C-5541, MIL-E-5400, MIL-I-45208A, MIL-STD-810, AND SAE J1455

ACCEPTANCE TEST PROCEDURE: ATP-GPS-L1L2-100



OUTPUT PORT CAN BE FROM THE BOTTOM (PIN, MMCX, MCX, SMA R-SMA, SSMA, SMB SSMB, SSMC, SSMP)

SIZE	FREQ. BAND	LNA:
1: 2" SQ.	1215: L1/L2	A2: WITH 20 dB LNA
1.9: 1.9" SQ.	15: L1 ONLY	A4: WITH 40 dB LNA
2: 2.6" DIA.		P: PASSIVE (WITHOUT LNA)
3: 3.5" DIA.		P2: DUAL CP (RHCP/LHCP) AND PASSIVE (WITHOUT LNA)
4: MINIARINC		P2L: DUAL LINEAR (VERT. HOR. AND PASSIVE) (WITHOUT LNA)

P/N: 1.2G1215P2L-8NSSF-4

CABLE LENGTH	CONNECTOR	COLOR
X: NO CABLE	SS: SMA MALE, SSF: SMA FEMALE	-1: GLOSS WHITE #17925 PER FED-STD-595B
#: CABLE LENGTH (IN)	MM: MCX MALE, MMF: MCX FEMALE	-2: LUSTERLESS GRAY #36320 PER FED-STD-595B
	OTHER CONNECTORS ARE ALSO AVAILABLE	-3: OLIVE DRAB GREEN #34031 PER FED-STD-595B
		-4: LUSTERLESS BLACK #37038 PER FED-STD-595B

QUANTITY REQD	DESCRIPTION	PART NO	SPECIFICATION	MATERIAL	FINISH	ITEM NO
1	ADHESIVE GASKET	12345G-3M-1.2G				5
1						3
1						2
1						1

UNLESS OTHERWISE SPECIFIED DIMENSIONS ARE IN INCHES TOLERANCES ARE:		ANTCOM CORP. TORRANCE, CALIFORNIA	
FRACTIONS	DIGITAL	ANGLES	
± 1/64	.0015 .0025 .0035	± 1°	
TOLERANCE 51M PER ANSI Y14.5	DRIVER	CHECKED	
SEPCIF: ALL SURFACES BEHIND INTERNAL EDGES .005 TO .015	ENGINEER	APPROVED	
MIL-SPEC: ALL SURFACES BEHIND INTERNAL EDGES .005 TO .015	S. HUYNH	DATE	
DRY'S ON A COMBON Q.224.006	Mar-11-05	CAP FILE NO	
MACHINED SURFACES	SCALE 1/1	SHEET	1 OF 1
DO NOT SCALE DRAWING			

1. DIMENSIONS IN BRACKETS ARE IN MILLIMETERS [mm]

NOTES: UNLESS OTHERWISE SPECIFIED:

NMO Connector Option is Now Available for Some Antennas