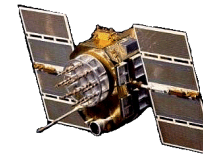




Passive L1/L2 GPS/Glonass Antenna, P/N: 1.2G1215P-XNSLRS-4-316B

Active L1/L2 GPS/Glonass Antenna, P/N: 1.2G1215A2-XNSLRS-4-316B

1.2" Square, Flat Mount Configurations



ISO 9001:2008/FAA Approved Facility Antenna Mounts: <http://www.antcom.com/documents/catalogs/PeripheralAntennaProducts2.pdf>

ANTCOM CORPORATION . 367 Van Ness Way, #602 . Torrance, CA 90501 . Tel: (310) 782-1076 . Fax: (310) 782-1086 . E-mail: antennas@antcom.com . <http://www.antcom.com>

NOTICE OF PROPRIETARY RIGHTS
THIS DOCUMENT CONTAINS CONFIDENTIAL, TECHNICAL DATA INCLUDING TRADE SECRETS PROPRIETARY TO ANTCOM CORP. DISCLOSURE OF THIS DATA TO YOU IS EXPRESSLY CONDITIONED UPON YOUR AGREEMENT THAT ITS USE IS LIMITED TO USE WITH YOUR COMPANY ONLY AND DOES NOT INCLUDE MANUFACTURE OR PROCESSING THEREOF. ANY OTHER USE IS EXPRESSLY PROHIBITED WITHOUT PRIOR WRITTEN CONSENT OF ANTCOM CORP.

SPECIFICATIONS

ELECTRICAL:

	L1: (1575.42 ±12) MHz		L2: (1227.60 ±12) MHz	
FREQUENCY:				
RADIATION PATTERN:	HEMISPHERICAL			
POLARIZATION:	RHCP			
VSWR:	< 1.5:1		< 1.5:1	
IMPEDANCE:	50 ohms		50 ohms	
ANTENNA GAIN (dBic):	Free Space	3 in G.P.	Free Space	3 in G.P.
@ 90° (ZENITH):	-0.8	+3.8	-3.7	+2.7
@ 10° Elevation:	-9.3	-4.3	-9.9	-6.3
@ 20° Elevation:	-6.8	-2.2	-9.2	-4.2
@ 30° Elevation:	-5.2	-0.7	-7.8	-2.4
@ 60-90° Elevation:	> -2.1	> 2.5	> -4.7	> 1.3
BEAM WIDTH (3dB):	100 Deg.	120 Deg.	100 Deg.	90 Deg.
AXIAL RATIO:	2.5 dB		3	
LIGHTNING PROTECTION:	DC GROUNDING			

LNA OPTION:

LNA GAIN: 24.0 dB
 LNA NOISE FIGURE: 1.8 dB
 LNA P 1dB Out: +16 dBm
 VOLTAGE/CURRENT: (+2.8 TO +28) Volts DC / (15 TO 25) mA

MECHANICAL:

SIZE: 1.250 in. [31.75 mm] SQ.
 HEIGHT: 0.547 in. [13.89 mm]
 WEIGHT: 1.1 oz. (31.2 g)
 FINISH: SKYDROL RESISTANT POLYURETHANE ENAMEL
 BASE IRIDITE PER MIL-C-5441
 MATERIAL: 6061-T6 ALUMINUM ALLOY BASE
 COMPOSITE RADOME, ABRASION, UV, SOLVENT,
 SKYDROL RESISTANCE, AND FIRE RETARDANT
 CONNECTOR: 24" RG316B CABLE/ SNAP-LOCK RIGHT ANGLE M-SMA
 (OPTION: MCX, SMA, SMB, SSMA, SSMB, SSMC, OR TNC)

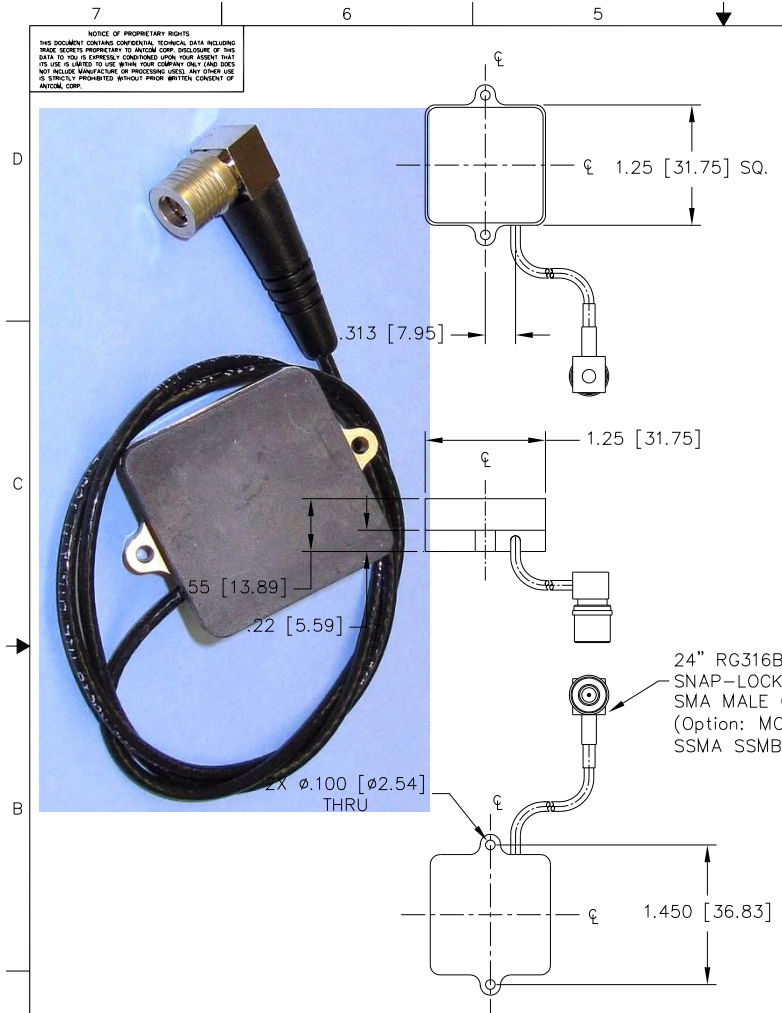
ENVIRONMENTAL:

TEMPERATURE: -67 °F TO +185 °F [-55 °C TO +85 °C]
 ALTITUDE: 70,000 ft.
 VIBRATION: > 30 G's
 LEAKAGE: HERMETICALLY SEAL

FEDERAL & MILITARY SPECIFICATIONS:

DESIGN TO: FAA TSO-C144, DO-160D, D0-228, MIL-C-5541,
 MIL-E-5400, MIL-I-45208A, MIL-STD-810, AND SAE J1455

ACCEPTANCE TEST PROCEDURE: ATP-GPS-L1L2-100



24" RG316B CABLE/
 SNAP-LOCK RIGHT ANGLE
 SMA MALE CONNECTOR
 (Option: MCX, SMA, SMB
 SSMA SSMB, SSMC, or TNC)

SIZE:	FREQ. BAND:	LNA:
1: 2" SQ.	1215: L1/L2	A2: WITH 20 dB LNA
1.9: 1.9" SQ.	15: L1 ONLY	A4: WITH 40 dB LNA
2: 2.6" DIA.		P: WITHOUT LNA
3: 3.5" DIA.		
4: MINI ARINC		

P/N: 1.2G1215P-XNSLRS-4

1. DIMENSIONS IN BRACKETS ARE IN MILLIMETERS [mm]
 NOTES: UNLESS OTHERWISE SPECIFIED:

CABLE'S LENGTH:	CONNECTOR:	COLOR:
X: NO CABLE	S: SMA; RS: R-SMA; P: PINS; M: MCX;	-1: GLOSS WHITE #17925 PER FED-STD-595B
M: MAG; N: NO MAG	MM: MMCX; SMB: SSMA; SSMB; SSMC;	-2: LUSTERLESS GRAY #36320 PER FED-STD-595B
#: CABLE LENGTH (IN)	SSMP; T: TB; TNC; TNC-Bulkhead	-3: OLIVE DRAB GREEN #34094 PER FED-STD-595B
R: RIGHT ANGLE CON.	GRM: RIGHT ANGLE QMA	-4: LUSTERLESS BLACK #37038 PER FED-STD-595B

QUANTITY REQD	DESCRIPTION	PART NO	SPECIFICATION	MATERIAL	FINISH	REV
1	ADHESIVE GASKET	12345G-3M-1.2G	-	-	-	1
-2	-1					

UNLESS OTHERWISE SPECIFIED
 DIMENSIONS ARE IN INCHES
 FRACTIONS TO DECIMALS ANGLES
 ± 1/64 .xxx .005 ± 1'

ANTCOM CORP. TORRANCE, CALIFORNIA
 OUTLINE DRAWING
 L1/L2 GPS/Glonass ANTENNA
 P. TYN
 AUG-27-12
 S. HUYNH
 MAR-11-05
 S. HUYNH
 MAR-11-05
 S. HUYNH
 MAR-11-05
 S. HUYNH
 AUG-27-12
 S. HUYNH
 AUG-27-12

SCALE 1/1 SHEET 1 OF 1

NMO Connector Option is Now Available for Some Antennas