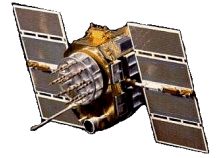




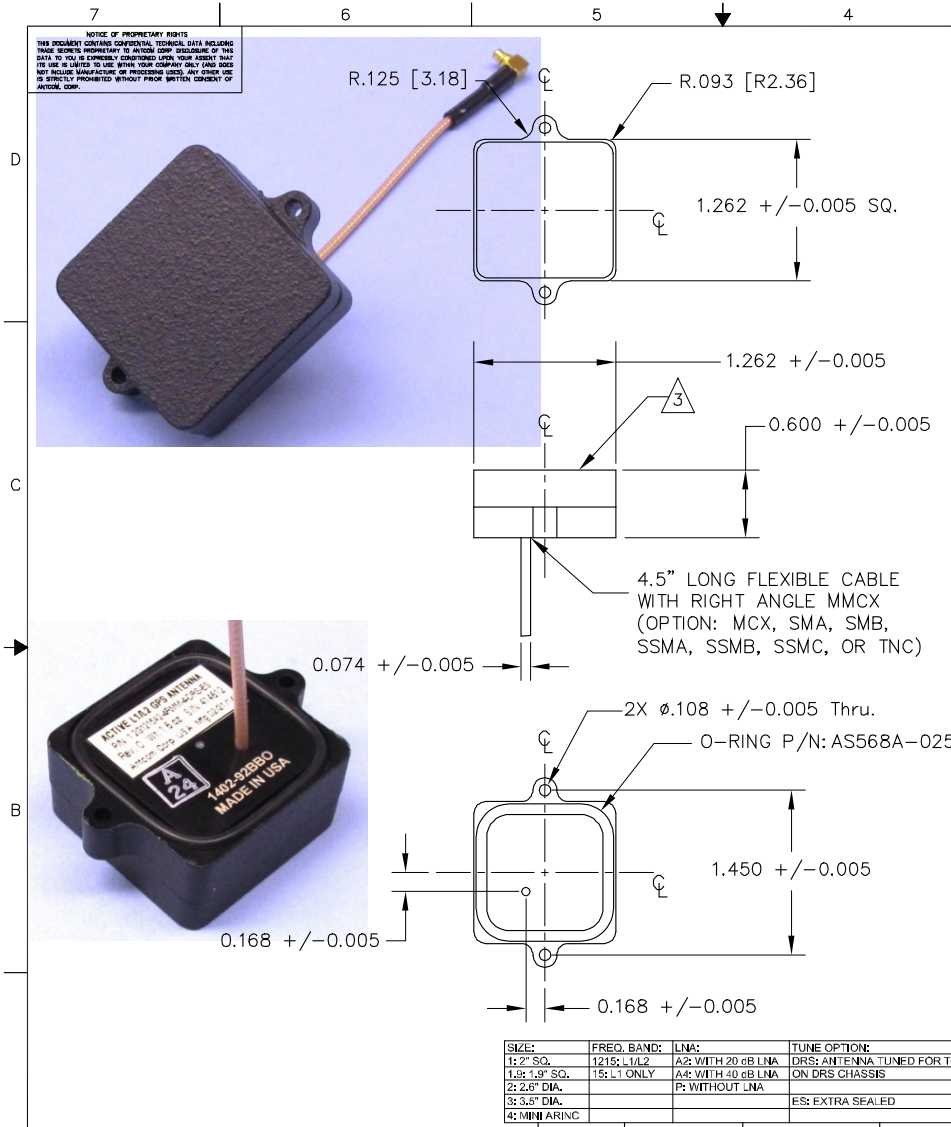
Active or Passive L1/L2 GPS Antenna, P/N: 1.2G1215A2-4RMM-4-DRS-ES Rev D2
 (Improved Gain) 1.2" Square, Back Connector Configurations



ISO 9001:2008/FAA Approved Facility Antenna Mounts: <http://www.antcom.com/documents/catalogs/PeripheralAntennaProducts2.pdf>

ANTCOM CORPORATION . 367 Van Ness Way, #602 . Torrance, CA 90501 . Tel: (310) 782-1076 . Fax: (310) 782-1086 . E-mail: antennas@antcom.com . <http://www.antcom.com>

NOTICE OF PROPRIETARY RIGHTS
 THIS DOCUMENT CONTAINS CONFIDENTIAL, TECHNICAL DATA INCLUDING TRADE SECRETS PROPRIETARY TO ANTCOM CORP. DISCLOSURE OF THIS DATA TO YOU IS EXPRESSLY PROHIBITED UNLESS YOU AGREE THAT ITS USE IS LIMITED TO USE WITH YOUR COMPANY ONLY AND DOES NOT INCLUDE MANUFACTURE OR PROCESSING USED. ANY OTHER USE IS EXPRESSLY PROHIBITED WITHOUT PRIOR WRITTEN CONSENT OF ANTCOM CORP.



SPECIFICATIONS

ELECTRICAL:

FREQUENCY:	L1: (1575.42 ±12) MHz	L2: (1227.60 ±12) MHz
RADIATION PATTERN:	HEMISPHERICAL	
POLARIZATION:	RHCP	
VSWR:	< 1.5:1	< 1.5:1
IMPEDANCE:	50 ohms	50 ohms
ANTENNA GAIN (dBic):	Free Space	3 in G.P.
@ 90 ° (ZENITH):	- 0.8	+ 3.8
@ 10 ° Elevation:	- 9.3	- 4.3
@ 20 ° Elevation:	- 6.8	- 2.2
@ 30 ° Elevation:	- 5.2	- 0.7
@ 60 - 90 ° Elevation:	> - 2.1	> 2.5
BEAM WIDTH (3dB):	100 Deg.	120 Deg.
AXIAL RATIO:	2.5 dB	3dB
LIGHTNING PROTECTION:	DC GROUNDING	

LNA OPTION:

LNA GAIN:	24.0 dB
LNA NOISE FIGURE:	1.8 dB
LNA P 1dB Out:	+16 dBm
VOLTAGE/CURRENT:	(+2.8 TO +28) Volts DC / (15 TO 25) mA

MECHANICAL:

SIZE:	1.250 in. [31.75 mm] SQ.
HEIGHT:	0.547 in. [13.89 mm]
WEIGHT:	1.1 oz. (31.2 g)
FINISH:	SKYDROL RESISTANT POLYURETHANE ENAMEL BASE IRIDITE PER MIL-C-5441
MATERIAL:	6061-T6 ALUMINUM ALLOY BASE COMPOSITE RADOME, ABRASION, UV, SOLVENT, SKYDROL RESISTANCE, AND FIRE RETARDANT
CONNECTOR:	4.5" LONG FLEXIBLE CABLE WITH RIGHT ANGLE MMCX (OPTION: MCX, SMA, SMB, SSMA, SSMB, SSMC, OR TNC)

ENVIRONMENTAL:

TEMPERATURE:	-67 °F TO +185 °F [-55 °C TO +85 °C]
ALTITUDE:	70,000 ft.
VIBRATION:	> 30 G's
LEAKAGE:	HERMETICALLY SEAL

FEDERAL & MILITARY SPECIFICATIONS:

DESIGN TO: FAA TSO-C144, DO-160D, D0-228, MIL-C-5541, MIL-E-5400, MIL-I-45208A, MIL-STD-810, AND SAE J1455

ACCEPTANCE TEST PROCEDURE: ATP-GPS-L1L2-100

SIZE:	FREQ. BAND:	LNA:	TUNE OPTION:
1: 2" SQ.	1215:L1/L2	A2: WITH 20 dB LNA	DRS: ANTENNA TUNED FOR TOP MOUNTING
1.8: 1.9" SQ.	15: L1 ONLY	A4: WITH 40 dB LNA	ON DRS CHASSIS
2: 2.6" DIA.		P: WITHOUT LNA	
3: 3.5" DIA.			ES: EXTRA SEALED
4: MINIMARINC			

P/N: 1.2G1215A2-4RMM-4-DRS-ES

CABLE'S LENGTH:	CONNECTOR:	COLOR:
X: NO CABLE	S: SMA; RS: R-SMA; M: MCX; RM: R-MCX	-1: GLOSS WHITE #17925 PER FED-STD-595B
M: MAG. IN; NO MAG.	MM: MMCX; RMM: R-MMCX; SSMA; SSMB	-2: LUSTERLESS GRAY #36320 PER FED-STD-595B
#: CABLE LENGTH (IN)	SMB; SSMC; SSMP; T. TB; TNC; TNC-Bulkhead	-3: OLIVE DRAB GREEN #34094 PER FED-STD-595B
R: RIGHT ANGLE CON.	L-RM: Right Angle Male Lemo	-4: LUSTERLESS BLACK #37038 PER FED-STD-595B

UNLESS OTHERWISE SPECIFIED DIMENSIONS ARE IN INCHES FRACTIONS DECIMALS ANGLES ± 1/64 .002 .005 ± 1'	ORIGINAL DRAWN: S. HUYNH Dec-05-11
TOLERANCE 5VM PER ANSI Y14.5 REMOVE ALL DIMS FROM 0.0015 TO 0.015 SIZE IN BRASS PER MIL-S-8879 DIMS TO A COMPLEX ± .005 MACHINED SURFACES ✓	ORIGINAL DESIGNED: S. HUYNH Dec-05-11
DO NOT SCALE DRAWING	UPDATED: S. HUYNH Feb-16-17
	UPDATE DRAWN: P. TRAN Feb-16-17
	APPROVED: S. HUYNH Feb-16-17

ANTCOM CORP. TORRANCE, CALIFORNIA	
OUTLINE DRAWING	
L1/L2 ACTIVE or PASSIVE GPS ANTENNA	
REV. DATE	BY
D1 3CVE1	S. HUYNH
SCALE 1/1	SHEET 1 OF 1

1. DIMENSIONS IN BRACKETS ARE IN MILLIMETERS [mm]
2. ANTENNA TUNED FOR TOP MOUNTING OF CHASSIS WITH STIC-KOTO 8100 SERIES

NOTES: UNLESS OTHERWISE SPECIFIED: