



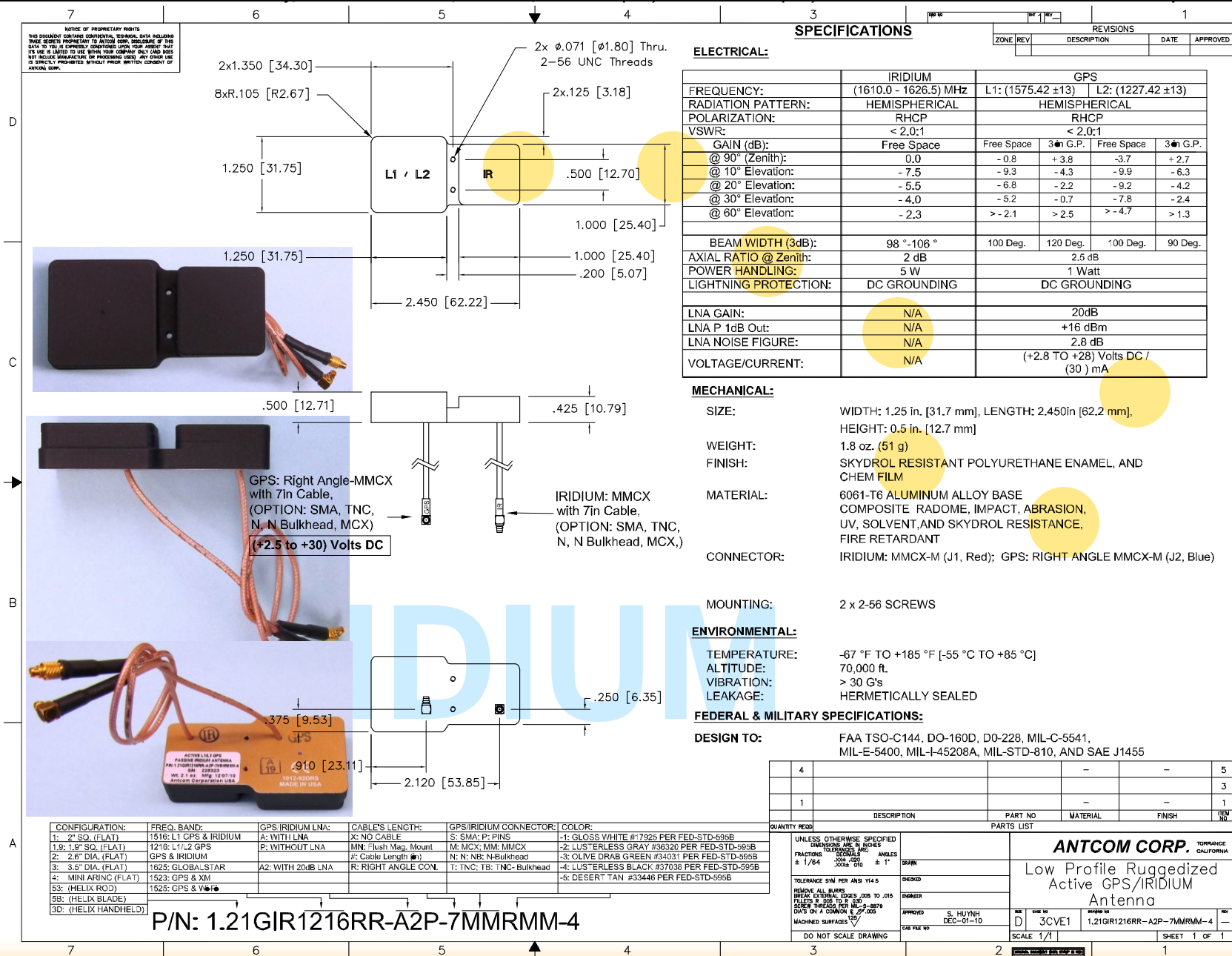
ISO 9001:2008/FAA Approved Facility

# Active L1/L2 GPS & IRIDIUM Antenna

P/N: 1.21GIR1216RR-A2P-7MMRMM-4  
(1.25" x 2.45" x 0.5"), Front/Back Mount with Bottom Cable



ANTCOM CORPORATION, 367 Van Ness Way, Suite 602, Torrance, CA 90501, USA. Tel: (310) 782-1076. Fax: (310) 782-1086. E-mail: antennas@antcom.com. http://www.antcom.com



NMO Connector Option is Now Available for Some Antennas