



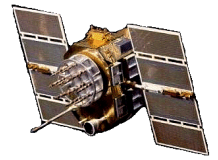
ISO 9001:2008/FAA Approved Facility

Antenna Mounts: <http://www.antcom.com/documents/catalogs/PeripheralAntennaProducts2.pdf>

20,000G L1 GPS Antenna, P/N: 0.9G15P-12NX-2-GDD (12" Cable)

P/N: 0.9G15P-0.86NSMP-4-U-GDD

1.2" Sq. x 0.294in Thick, Front Mount, Side Cable Configuration



ANTCOM CORPORATION . 367 Van Ness Way, Suite 602 . Torrance, CA 90501 . Tel: (310) 782-1076 . Fax: (310) 782-1086 . E-mail: antennas@antcom.com . <http://www.antcom.com>

NOTICE OF PROPRIETARY RIGHTS
THIS DOCUMENT CONTAINS CONFIDENTIAL, TECHNICAL DATA INCLUDING TRADE SECRETS PROPRIETARY TO ANTCOM CORP. DISCLOSURE OF THE DATA TO YOU IS EXPRESSLY CONTINGENT UPON YOUR AGREEMENT THAT ITS USE IS LIMITED TO USE WITHIN YOUR COMPANY ONLY AND DOES NOT INCLUDE MANUFACTURE OR PROCESSING UNLESS ANY OTHER USE IS EXPRESSLY PROHIBITED WITHOUT PRIOR WRITTEN CONSENT OF ANTCOM CORP.

SPECIFICATIONS

ZONE		REV	DESCRIPTION	DATE	APPROVED
A	ADDED	RADOME-REVISED HEIGHT	04-14-14	S.H.	

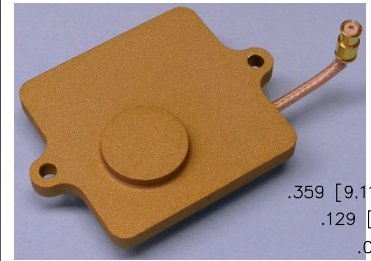
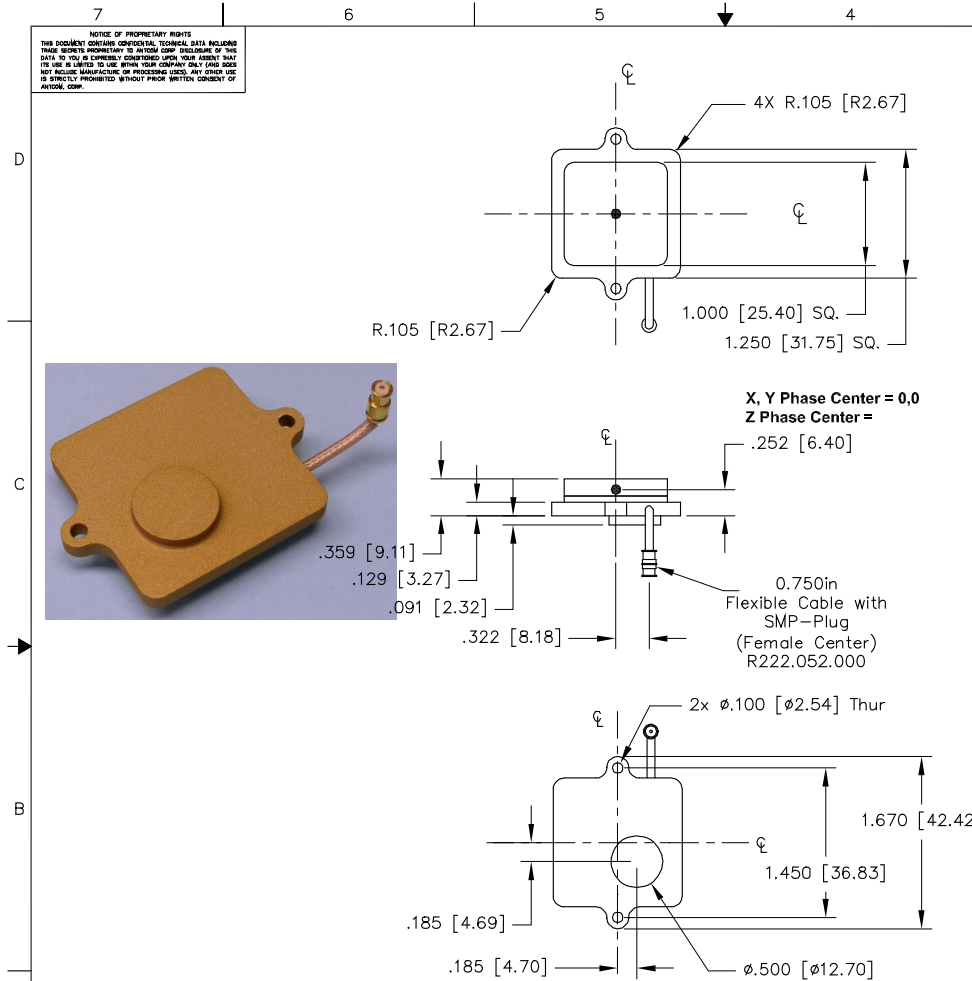
ELECTRICAL:	
FREQUENCY:	L1: (1575.42 ±12) MHz
RADIATION PATTERN:	HEMISPHERICAL
POLARIZATION:	RHCP
VSWR:	< 1.5:1
IMPEDANCE:	50 ohms
ANTENNA GAIN (dBic):	Free Space 3 in G.P.
@ 90 ° (ZENITH):	- 0.8 + 3.8
@ 10 ° Elevation:	- 9.3 - 4.3
@ 20 ° Elevation:	- 6.8 - 2.2
@ 30 ° Elevation:	- 5.2 - 0.7
@ 60 - 90 ° Elevation:	> - 2.1 > 2.5
BEAM WIDTH (3dB):	100 Deg. 120 Deg.
AXIAL RATIO:	2.5 dB
LIGHTNING PROTECTION:	DC GROUNDING

LNA OPTION:	
LNA GAIN:	24.0 dB
LNA NOISE FIGURE:	1.8 dB
LNA P 1dB Out:	+16 dBm
VOLTAGE/CURRENT:	(+2.8 TO +28) Volts DC / (15 TO 25) mA

MECHANICAL:	
SIZE:	1.250 in.[31.75 mm] SQ.
HEIGHT:	0.359 in. [9.11 mm]
WEIGHT:	0.75 oz. (22 g)
FINISH:	SKYDROL RESISTANT POLYURETHANE ENAMEL BASE IRIDITE PER MIL-C-5541F Type I Class 1A
MATERIAL:	6061-T6 ALUMINUM ALLOY BASE COMPOSITE RADOME, ABRASION, UV, SOLVENT, SKYDROL RESISTANCE, AND FIRE RETARDANT
CONNECTOR:	0.860in SMP-Plug (Female Center) Cable (OPTION: MCX, SMA, SMB, SSMA, SSB, SSMC, OR TNC)

ENVIRONMENTAL:	
TEMPERATURE:	-67 °F TO +185 °F [-55 °C TO +85 °C]
ALTITUDE:	70,000 ft.
VIBRATION:	20,000 G's
LEAKAGE:	HERMETICALLY SEAL

FEDERAL & MILITARY SPECIFICATIONS:	
DESIGN TO:	FAA TSO-C144, DO-160D, DO-228, MIL-C-5541, MIL-E-5400, MIL-I-45208A, MIL-STD-810, AND SAE J1455
ACCEPTANCE TEST PROCEDURE:	ATP-GPS-L1L2-100



SIZE:	FREQ. BAND:	LNA:	High Shock/Vibration Options:
1: 2" SQ.	1215: L1/L2	A2: WITH 20 dB LNA	L: 20,000G
1.9: 1.9" SQ.	15: L1 ONLY	A4: WITH 40 dB LNA	
2: 2.6" DIA.		P: WITHOUT LNA	
3: 3.3" DIA.			
4: MINI ARINC			

QUANTITY REQD	DESCRIPTION	PART NO	SPECIFICATION	MATERIAL	FINISH	REV
1	ADHESIVE GASKET	12345G-3M-1.2G	-	-	-	1

P/N: 0.9G15P-0.86NSMP-4-U-GDD

1. DIMENSIONS IN BRACKETS ARE IN MILLIMETERS [mm]
NOTES: UNLESS OTHERWISE SPECIFIED:

CABLE'S LENGTH:	CONNECTOR:	COLOR:
X: NO CABLE	S: SMA; RS: R-SMA; P: PINS; M: MCX;	-1: GLOSS WHITE #17925 PER FED-STD-595B
M: MAG; N: NO MAG;	MM: MMCK; SMB: SSMA; SSB: SSMC;	-2: LUSTERLESS GRAY #36320 PER FED-STD-595B
#1: CABLE LENGTH (IN)	SSMP; SMP; T; TB; TNC; TNC-Bulkhead	-3: OLIVE DRAB GREEN #34031 PER FED-STD-595B
R: RIGHT ANGLE CON.	L: Left; Right Angle Male; Lemo	-4: LUSTERLESS BLACK #37038 PER FED-STD-595B

UNLESS OTHERWISE SPECIFIED DIMENSIONS ARE IN INCHES FRACTIONS TO DECIMALS ANGLES ± 1/64 .005 .005 ± 1°
TOLERANCE 5VM PER ANSI Y14.5 REMOVE ALL DIMENSIONS BREAK EXTERNAL EDGES 0.05 TO .015 SLOPE 1:20 TO 1:100 SLOPE 1:25 PER MIL-C-8878 DIMS ON A COMMON 2.00 ± .005 MACHINED SURFACES 12.7
DO NOT SCALE DRAWING

ANTCOM CORP. TORRANCE, CALIFORNIA

High Vibration L1 GPS ANTENNA

DATE: 14 APR 2014
DWG NO: D13CVE1
REV: 1
SCALE: 1/1
SHEET: 1 OF 1

NMO Connector Option is Now Available for Some Antennas