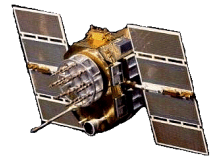




Active L1 GPS Antenna, P/N: 0.9G15A2-6RM-4 Rev B

1.2" Square, Front Mount, Back Cable Configurations

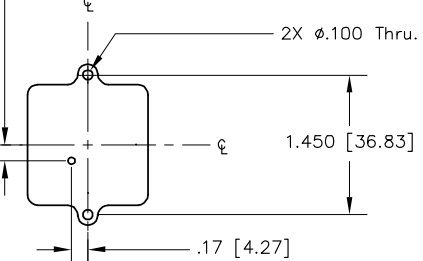
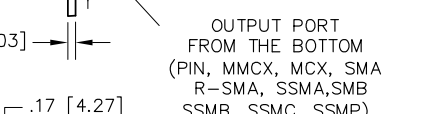
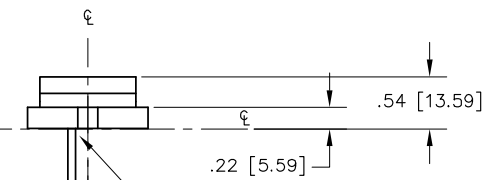
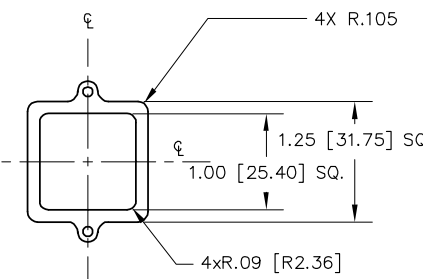
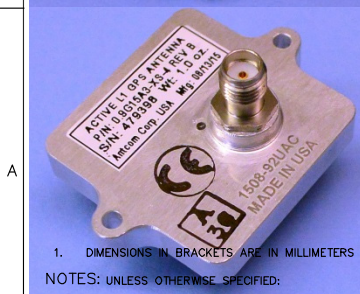
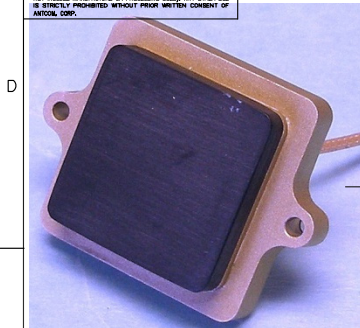


ISO 9001:2008/FAA Approved Facility

Antenna Mounts: <http://www.antcom.com/documents/catalogs/PeripheralAntennaProducts2.pdf>

ANTCOM CORPORATION . 367 Van Ness Way, Suite 602 . Torrance, CA 90501 . Tel: (310) 782-1076 . Fax: (310) 782-1086 . E-mail: antennas@antcom.com . <http://www.antcom.com>

NOTICE OF PROPRIETARY RIGHTS
THIS DOCUMENT CONTAINS CONFIDENTIAL, TECHNICAL DATA INCLUDING TRADE SECRETS PROPRIETARY TO ANTCOM CORP. DISCLOSURE OF THIS DATA TO YOU IS EXPRESSLY CONSIDERED VIOLATION OF YOUR OBLIGATION OF CONFIDENTIALITY. YOUR OBLIGATION OF CONFIDENTIALITY IS NOT LIMITED BY THIS NOTICE. YOU SHALL NOT USE OR DISCLOSE THIS INFORMATION IN ANY MANNER WITHOUT THE WRITTEN CONSENT OF ANTCOM CORP.



SIZE	FREQ. BAND	LNA	High Shock/Vibrator Options
1: 2" SQ.	1215: L1/L2	A2: WITH 20 dB LNA	U: 20,000G
1.9: 1.9" SQ.	15: L1 ONLY	P: WITHOUT LNA	
2: 2.6" DIA.			
3: 3.5" DIA.			
4: MINIARINC			

P/N: 0.9G15A2-6RM-4

CABLE LENGTH	CONNECTOR	COLOR
X: NO CABLE	S: SMA; RS: R-SMA; P: PINS; M: MCX	-1: GLOSS WHITE #17925 PER FED-STD-595B
M: MAG N; NO MAG	MM: MMCX; SMB; SSMA; SSMB; SSMC	-2: LUSTERLESS GRAY #36320 PER FED-STD-595B
H: CABLE LENGTH (IN)	SSMP; T: TB; TNC; RMC; RIGHT ANGLE MCX	-3: OLIVE DRAB GREEN #34031 PER FED-STD-595B
R: RIGHT ANGLE CON.	L: RMC; Right Angle Male Lemo	-4: LUSTERLESS BLACK #37038 PER FED-STD-595B

SPECIFICATIONS

ELECTRICAL:

ELECTRICAL:		REVISIONS	
FREQUENCY:	L1: (1575.42 ± 12) MHz (Tuned on VS-050A-01 Rev. - Housing)	ZONE	REV
RADIATION PATTERN:	HEMISPHERICAL	A	3dB More In Gain
POLARIZATION:	RHCP	B	With LNA and Filter
VSWR:	< 1.5:1	DATE	APPROVED
IMPEDANCE:	50 ohms	Sep-21-06	S.H
ANTENNA GAIN (dBic):	Free Space 3 in G.P.	July-01-09	S.H
@ 90° (ZENITH):	- 0.8 + 3.8		
@ 10° Elevation:	- 9.3 - 4.3		
@ 20° Elevation:	- 6.8 - 2.2		
@ 30° Elevation:	- 5.2 - 0.7		
@ 60-90° Elevation:	> - 2.1 > 2.5		
BEAM WIDTH (3dB):	100 Deg.		
AXIAL RATIO:	2.5 dB		
LIGHTNING PROTECTION:	DC GROUNDING		

LNA OPTION:

LNA GAIN:	24.0 dB
LNA NOISE FIGURE:	1.8 dB
LNA P 1dB Out:	+16 dBm
VOLTAGE/CURRENT:	(+2.8 TO +28) Volts DC / (15 TO 25) mA
FILTER:	2-POLE FILTER (P/N: KFF6338A)

MECHANICAL:

SIZE:	1.250 in. [31.75 mm] SQ.
HEIGHT:	0.540 in. [13.59 mm]
WEIGHT:	1.05 oz. (30 g)
FINISH:	SKYDROL RESISTANT POLYURETHANE ENAMEL BASE IRIDIUM PER MIL-C-5441
MATERIAL:	6061-T6 ALUMINUM ALLOY BASE COMPOSITE RADOME, ABRASION, UV, SOLVENT, SKYDROL RESISTANCE, AND FIRE RETARDANT
CONNECTOR:	6" LONG FLEXIBLE CABLE with RIGHT ANGLE MCX (OPTION: MCX, SMA, SMB, SSMA, SSMB, SSMC, OR TNC)
TEMPERATURE:	-67 °F TO +185 °F [-55 °C TO +85 °C]
ALTITUDE:	70,000 ft.
VIBRATION:	>30 G's
LEAKAGE:	HERMETICALLY SEAL

FEDERAL & MILITARY SPECIFICATIONS:

DESIGN TO: FAA TSO-C144, DO-160D, D0-228, MIL-C-5541, MIL-E-5400, MIL-I-45208A, MIL-STD-810, AND SAE J1455
ACCEPTANCE TEST PROCEDURE: ATP-GPS-L1L2-100

QUANTITY REQD	DESCRIPTION	PART NO	FINISH	ITEM NO
1	Conductive ADHESIVE GASKET	123456-3M-0.9G	-	5
1			-	3
1			-	2
1			-	1

UNLESS OTHERWISE SPECIFIED DIMENSIONS ARE IN INCHES FRACTIONS DECIMALS ANGLES ± 1/64 .005 .015 ± 1°

TOLERANCE 51M PER ANSI Y14.5

FORM: ALL SURF. BEVEL EXTERNAL EDGES .005 TO .015

DRIVER: S. HUYNH

PROVIDER: S. HUYNH

APPROVED: S. HUYNH July-01-09

DATE: July-01-09

SCALE: 1/1

SHEET: 1 OF 1

ANTCOM CORP. TORRANCE, CALIFORNIA

Active L1 GPS ANTENNA

P/N: 0.9G15A2-6RM-4

1. DIMENSIONS IN BRACKETS ARE IN MILLIMETERS [mm]
NOTES: UNLESS OTHERWISE SPECIFIED:

NMO Connector Option is Now Available for Some Antennas