

7-Elements CRPA L1/L2 GPS Antenna Array

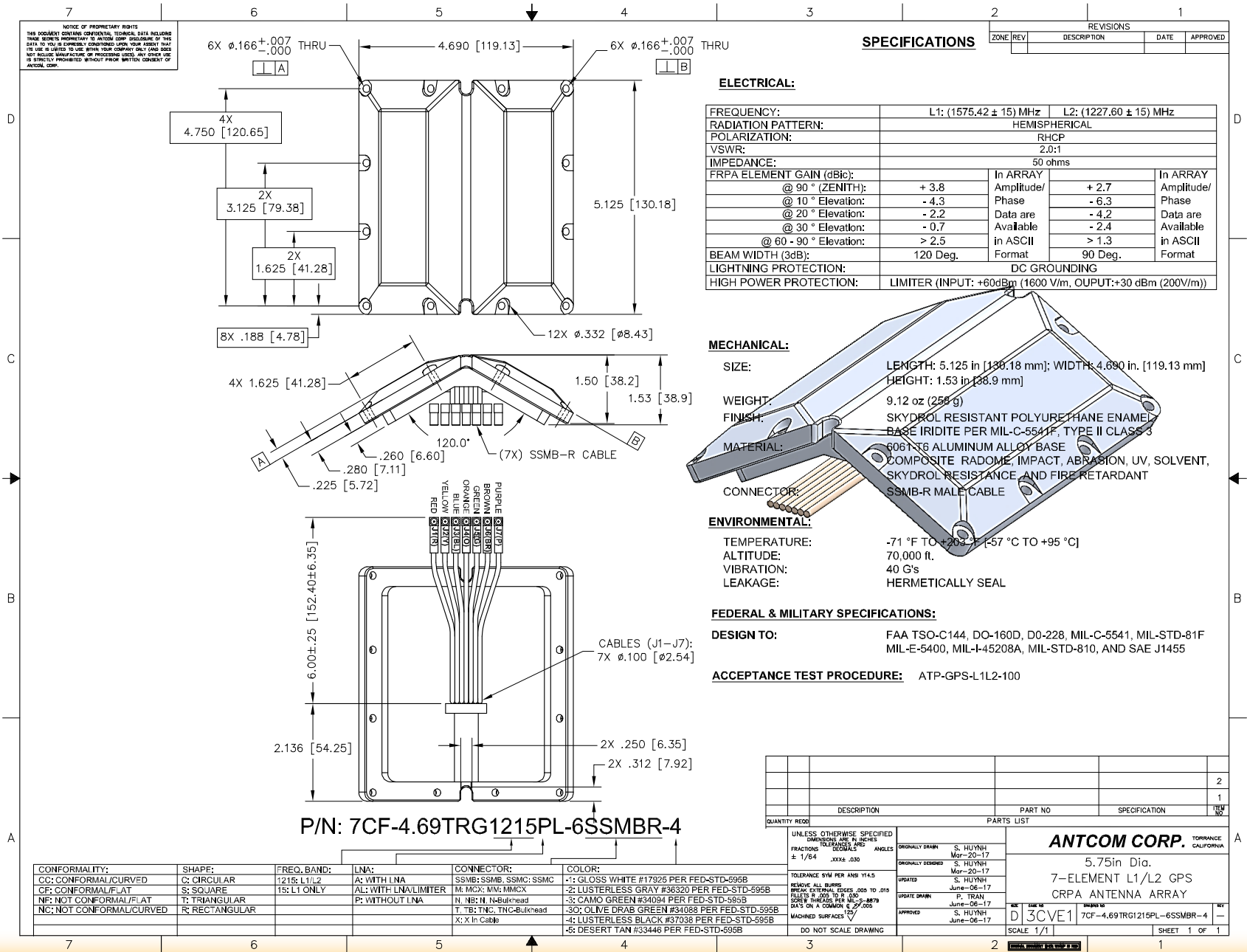
P/N: 7CF-4.69TRG1215PL-6SSMBR-4 (for SDB)

Other Mounting Hole Patterns, Cables, Connectors and Output Locations can be Customized

“-PL-” or “-AL-” for Limiter Options for High Power Pulse Protection

ANTCOM CORPORATION . 367 Van Ness Way, Suite 602 . Torrance, CA 90501 . Tel: (310) 782-1076 . Fax: (310) 782-1086 . E-mail: antennas@antcom.com . http://www.antcom.com

Wide Band GNSS Option Is Available



Antenna Mounts: http://www.antcom.com/documents/catalogs/PeripheralAntennaProducts2.pdf
Amplifiers/Power Divider/Combiner/Filter: http://www.antcom.com/documents/catalogs/PeripheralAntennaProducts1.pdf