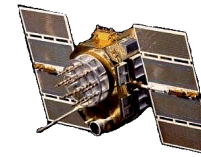




Active L1/L2 GPS Antennas

P/N: 1.9G1215AL3-XRS-2-LW2.5

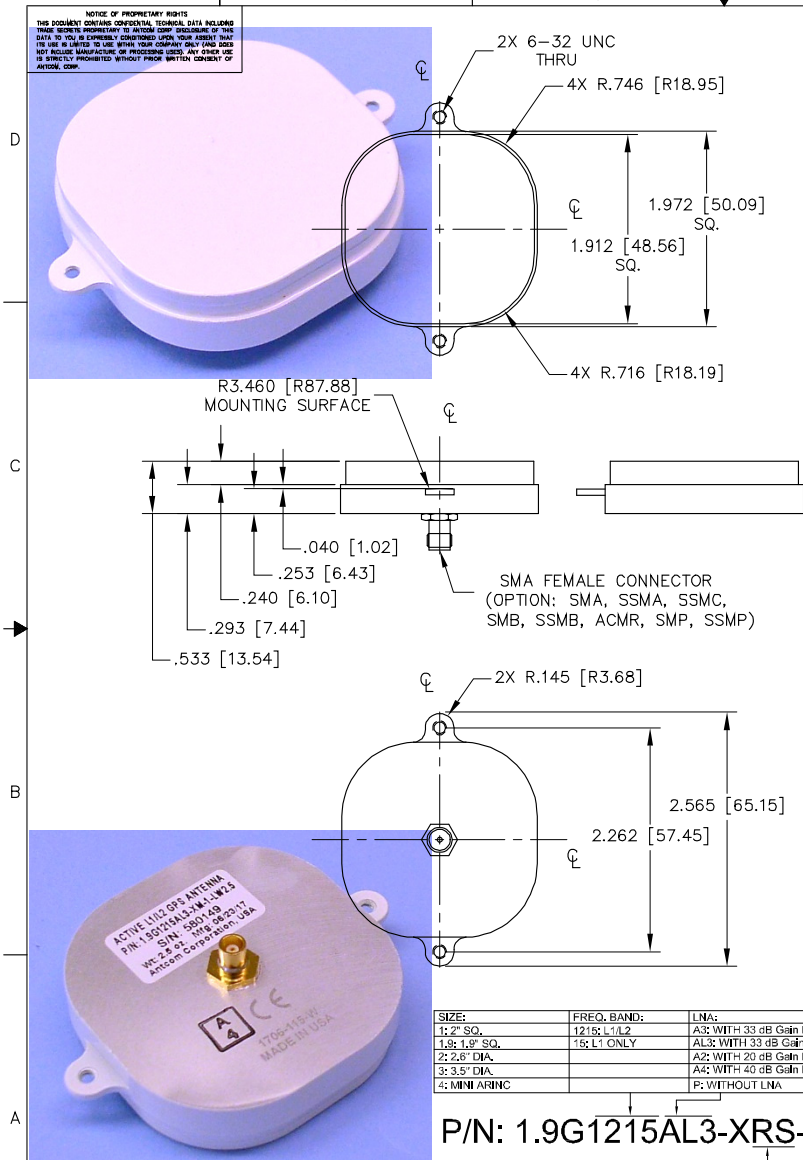
Other Mounting Radius, Connector and Color Options Are Available



ISO 9001:2008/FAA Approved Facility Antenna Mounts: <http://www.antcom.com/documents/catalogs/PeripheralAntennaProducts2.pdf>

ANTCOM CORPORATION . 367 Van Ness Way, #602 . Torrance, CA 90501 . Tel: (310) 782-1076 . Fax: (310) 782-1086 . E-mail: antennas@antcom.com . <http://www.antcom.com>

NOTICE OF PROPRIETARY RIGHTS
THIS DOCUMENT CONTAINS CONFIDENTIAL, TECHNICAL DATA INCLUDING TRADE SECRETS PROPRIETARY TO ANTCOM CORP. DISCLOSURE OF THIS DATA TO YOU OR OTHERS IS PROHIBITED. YOUR ASSENT TO THE USE OF THIS DATA IS CONSIDERED AS AN AGREEMENT TO THE USE OF THIS DATA IN THE MANNER AND FOR THE PURPOSES SPECIFIED IN THE NOTICES OF PROPRIETARY RIGHTS. ANY OTHER USE IS EXPRESSLY PROHIBITED WITHOUT PRIOR WRITTEN CONSENT OF ANTCOM CORP.



SPECIFICATIONS

ZONE	REV	REVISIONS		
		DESCRIPTION	DATE	APPROVED
ELECTRICAL:				
FREQUENCY:		L1: (1575.42 ±12) MHz		L2: (1227.60 ±12) MHz
RADIATION PATTERN:		HEMISPHERICAL		
POLARIZATION:		RHCP		RHCP
VSWR:		< 1.5:1		< 1.5:1
IMPEDANCE:		50 ohms		50 ohms
ANTENNA GAIN (dBi):		Free Space	3 in G.P.	4 ft G.P.
@ 90° (ZENITH):		+ 3.7	+ 4.7	+ 3.1
@ 10° Elevation:		- 2.9	- 1.8	- 1.9
@ 20° Elevation:		- 1.3	- 0.3	+ 0.6
@ 30° Elevation:		0.0	+ 1.4	+ 1.7
@ 60 - 90° Elevation:		> 3.0	> 3.9	> 2.4
BEAM WIDTH (3dB):		108 Deg.	114 Deg.	143 Deg.
AXIAL RATIO:		2 dB		2 dB
LIGHTNING PROTECTION:		DC GROUNDING		
LNA GAIN:		33 dB (Option A), 20 dB (Option A2)		
LNA NOISE FIGURE:		3.0 dB (Option A), 2 dB (Option A2)		
LNA P1dB Out:		+13 dBm		
LNA DC POWER:		2.5V/20mA, 3V/29mA, 3.3V/35mA, (2.5-24)V/<50mA		
REJECTION @ (-50/+50) MHz		-41 dB / -59 dB		-40 dB / -40 dB
@ (-100/+100) MHz		< -65 dB		< -65 dB
POWER HANDLING:		1 Watt CW, Optional: 10 Watts 1 microsec Pulse (-AL-)		

MECHANICAL:

SIZE: LENGTH = 1.972 in.[50.09 mm] SQ.
HEIGHT = 0.533 in. [13.54 mm]

WEIGHT: 2.0 oz. (57 g)

FINISH: SKYDROL RESISTANT POLYURETHANE ENAMEL
BASE IRIDITE PER MIL-C-5441F

MATERIAL: 6061-T6 ALUMINUM ALLOY BASE
COMPOSITE RADOME, IMPACT, ABRASION, UV, SOLVENT, SKYDROL RESISTANCE, AND FIRE RETARDANT

CONNECTOR: SMA FEMALE
(OPTION: SMA, SSMA, SSMC, SMB, SSMB, SMP, SSMP)

ENVIRONMENTAL:

TEMPERATURE: -67 °F TO +185 °F [-55 °C TO +85 °C]

ALTITUDE: 70,000 ft.

VIBRATION: > 30 G's

LEAKAGE: HERMETICALLY SEAL

FEDERAL & MILITARY SPECIFICATIONS:

DESIGN TO: FAA TSO-C144, DO-160D, D0-228, MIL-C-5541, MIL-E-5400, MIL-I-45208A, MIL-STD-810, AND SAE J1455

ACCEPTANCE TEST PROCEDURE: ATP-GPS-1.1L2-100

2. ADHESIVE GASKET IS SUPPLIED BY ANTCOM CORPORATION
1. DIMENSIONS IN BRACKETS ARE IN MILLIMETERS [mm]

NOTES: UNLESS OTHERWISE SPECIFIED:

SIZE:	FREQ. BAND:	LNAs:
1: 2" SQ.	1215 L1/L2	A3: WITH 33 dB Gain LNA
1.8: 1.8" SQ.	15: L1 ONLY	AL3: WITH 33 dB Gain LNA WITH LIMITER
2: 2.6" DIA.		A2: WITH 20 dB Gain LNA WITHOUT REJECTION FILTERS
3: 3.5" DIA.		A4: WITH 40 dB Gain LNA WITHOUT REJECTION FILTERS
4: MINI ARINC		P: WITHOUT LNA

P/N: 1.9G1215AL3-XRS-2-LW2.5

CABLE LENGTH:	CONNECTOR:	COLOR:
X: NO CABLE	UMCX/UMCX	-1: GLOSS WHITE #17925 PER FED-STD-595B
M: MAG. N: NO MAG.	S: SMA; SMC; SMC; P: PINS	-2: LUSTERLESS GRAY #36320 PER FED-STD-595B
#: CABLE LENGTH (IN)	M: MCR; MMR; MMMCX	-3: CAMO GREEN #34094 PER FED-STD-595B
R: RIGHT ANGLE CON.	T, TB, TNC, N,N	-4: LUSTERLESS BLACK #37038 PER FED-STD-595B
		-5: DESERT TAN #33446 PER FED-STD-595B

QUANTITY	DESCRIPTION	PART NO	SPECIFICATION	MATERIAL	FINISH	REV
1						3
1						2
1						1
-2						1

UNLESS OTHERWISE SPECIFIED DIMENSIONS ARE IN INCHES FRACTIONS DECIMALS ANGLES ± 1/64 .0002 .005 ± 1°

TOLERANCE SYM PER ANSI Y14.5 REMOVE ALL DIMENSIONS FROM DIMENSIONED EDGES .005 TO .010 SURF FINISH PER MIL-C-8839 PER MIL-C-8879 2X3 ON A CORNER & 2X .005 MACHINED SURFACES 125

DO NOT SCALE DRAWING

DATE	BY	CHKD BY	APP'D BY
Mar-13-13	S. HUYNH		
Mar-13-13	S. HUYNH		
Apr-26-17	S. HUYNH		
Apr-26-17	P. TRAN		
Apr-26-17	S. HUYNH		
Apr-26-17	S. HUYNH		

ANTCOM CORP. TORRANCE, CALIFORNIA

ACTIVE L1/L2 GPS ANTENNA

D13CVE1 1.9G1215AL3-XRS-2-LW2.5

SCALE: 1/1 SHEET 1 OF 1